

SA7868 BPS1-S8



SA7768 BPS1-S6



SA7668 BPS1-S5



SA766B BPS1-S5



SA7368 BPS1-S3



## LED MODULES

# SA BPS1 Series

### Features

- High brightness SMD3535 LED adopted
- Constant current (Non-DALI Compatible).
- Constant voltage (SA7769 Only **DALI** Compatible.)
- High brightness and small voltage drop of single bar, radiation-free
- Stable and reliable performance, easy installation
- IP60 Rated
- 3Years Warranty

### Specification

Item Code	Power(W)	Luminous Flux(lm)	Current Dissipation(A)	LED Quantity
SA 7368	8.2W	864	0.342	3
SA 7668	13.5W	1296	0.563	5
SA 766B	13.5W	1296	0.563	5
SA 7768	15.6W	1584	0.65	6
SA 7769 <b>DALI</b>	15.6W	1584	0.65	6
SA 7868	16W	1872	0.667	8

### Technical Characteristics

Voltage	DC24V
Efficacy	120lm
Viewing Angle	7° x 25°
IP Rating	IP60
CCT	6,400K
Colour	Pure White
CRI(Ra)	70+

### Temperature Ranges

Operating temperature	-20~60°C
Storage temperature	-20~70°C

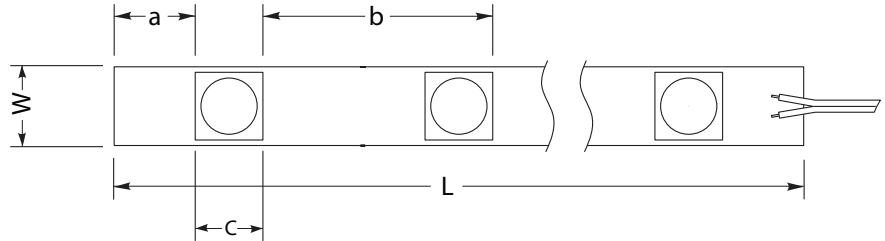
### Warranty

Warranty	3 Years
----------	---------

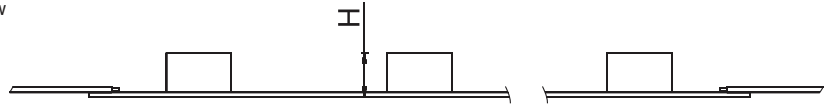
## Physical Characteristics

### Profile Drawings

Top View




Side View

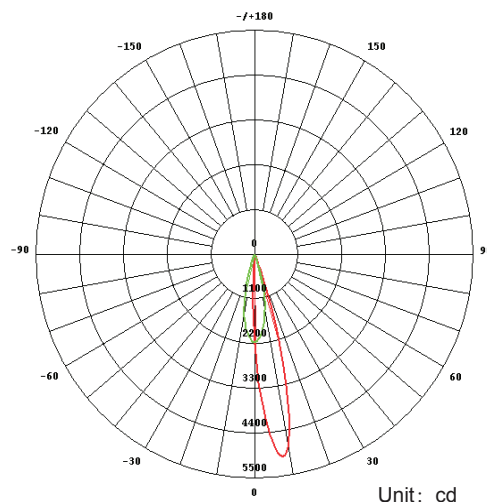


### Dimensions

Unit : mm

Item Code	Products Size(L*W*H)	Max In Series	a	b(LED Spacing)	c
SA 7368	219*25*14.8	10 pcs	26	73	21
SA 7668	365*25*14.8	6 pcs	26	73	21
SA 766B	225*25*14.8	6 pcs	24	45	21
SA 7768	438*25*14.8	5 pcs	26	73	21
SA 7769 	412*27*15	5 pcs	15	73	21
SA 7868	360*25*14.8	4 pcs	12.6	45	21

## Luminous intensity distribution diagram



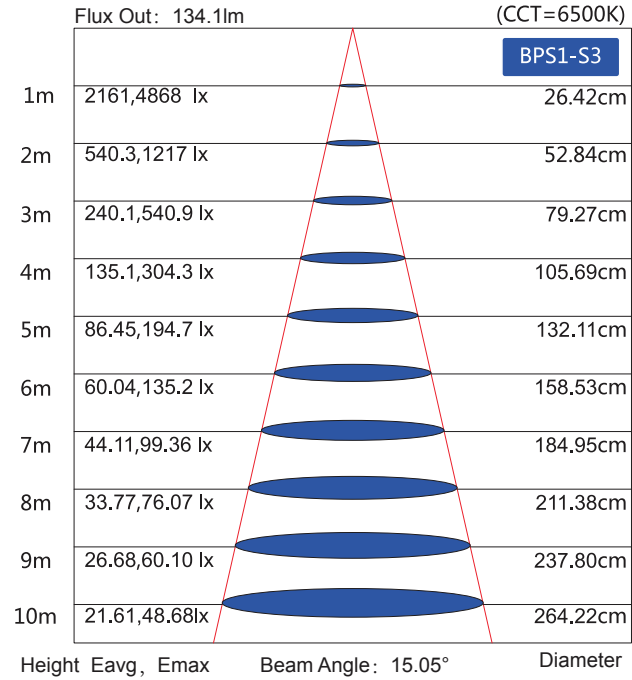
Unit: cd

— C0/180,15.0°

— C90/270,27.6°

AVERAGE BEAM ANGLE(50%): 21.3°

**Average illumination**



\*NOTE : The above two figures are with the sample BPS1-S3 at 6500K, please contact the sale for other sepc or CCT