

TEST RESULT

Name :	SALED AUSTRALIA
File :	SA 3LED SPECTRUM(2835)12V 90mA. IES
Report :	
Catalog :	
LampType :	Point
No. of lamps :	1
Lamp flux :	96.87 lm
Date :	2018-09-11
Comments :	

Information

Description :

[TEST] SA 3 LED Spectrum 12V 90mA
 [DATE] 2018.09.11
 [MANUFAC] SALED AUSTRALIA
 [LUMINAIRE]
 Average Data : Voltage = 11.78(V)
 Current = 88.32(mA)
 Watt = 1.04(W)

Luminaire Test Details :

Photometric Type : Type C
 Number of Lamps : 1
 Lumens per Lamp : 96.87
 Input Watt : 1.04

Luminous Dimension :

Width : 0.000 m
 Length : 0.000 m
 Height : 0.000 m
 Shape : Point

TEST RESULT

Name :	SALED AUSTRALIA
File :	SA 3LED SPECTRUM(2835)12V 90mA. IES
Report :	
Catalog :	
LampType :	Point
No. of lamps :	1
Lamp flux :	96.87 lm
Date :	2018-09-11
Comments :	

Intensity [cd] [1/6]

Θ/Φ	0.00°	30.00°	60.00°	90.00°	120.00°	150.00°	180.00°	210.00°
0.00°	38.27	38.37	38.39	38.26	38.23	38.28	38.27	38.37
1.00°	38.52	38.32	38.32	38.29	38.21	38.20	38.43	38.39
2.00°	38.44	38.36	38.23	38.15	38.24	38.07	38.43	38.26
3.00°	38.41	38.23	38.23	38.14	38.02	38.20	38.37	38.26
4.00°	38.30	38.16	38.11	38.04	37.95	38.09	38.31	38.25
5.00°	38.23	38.27	37.98	37.99	37.92	38.19	38.40	38.21
6.00°	38.34	38.03	37.88	37.96	37.93	38.08	38.15	38.09
7.00°	38.24	37.96	37.96	37.86	37.77	37.79	38.09	37.91
8.00°	37.97	38.00	37.74	37.97	37.67	38.07	37.83	37.90
9.00°	37.90	37.84	37.66	37.76	37.64	37.49	37.80	37.79
10.00°	37.67	37.57	37.59	37.71	37.54	37.42	37.60	37.51
11.00°	37.56	37.58	37.51	37.54	37.25	37.12	37.52	37.30
12.00°	37.33	37.33	37.43	37.35	37.16	37.13	37.34	37.09
13.00°	37.08	37.25	37.21	37.11	37.08	36.79	37.17	36.88
14.00°	36.89	37.03	37.12	36.90	36.91	36.80	36.98	36.68
15.00°	36.62	36.89	36.85	36.66	36.69	36.21	36.78	36.52
16.00°	36.45	36.85	36.58	36.45	36.59	36.29	36.62	36.52
17.00°	36.32	36.56	36.36	36.22	36.15	36.18	36.54	36.14
18.00°	36.10	36.37	36.24	36.00	35.98	35.95	36.40	35.94
19.00°	35.75	36.18	35.93	35.49	35.61	35.73	36.05	35.75
20.00°	35.44	35.95	35.66	35.19	35.45	35.45	35.79	35.69
21.00°	35.39	35.71	35.37	34.93	35.14	35.26	35.68	35.34
22.00°	35.27	35.44	34.94	34.68	34.90	34.97	35.46	35.21
23.00°	34.95	35.14	34.60	34.40	34.50	34.76	35.30	34.79
24.00°	34.54	34.91	34.39	34.20	34.20	34.26	35.23	34.65
25.00°	34.26	34.71	34.15	34.04	33.84	34.09	34.71	34.25
26.00°	34.13	34.37	34.08	33.96	33.70	33.68	34.47	33.95
27.00°	33.74	34.16	33.76	33.57	33.35	33.69	34.10	33.65
28.00°	33.45	33.84	33.51	33.43	33.14	33.39	33.79	33.34
29.00°	33.16	33.50	33.25	33.04	32.81	32.94	33.40	33.04
30.00°	32.84	33.36	33.00	32.74	32.45	32.57	33.11	32.74
31.00°	32.60	32.94	32.74	32.40	32.07	32.48	32.85	32.46
32.00°	32.22	32.73	32.44	32.04	31.92	31.96	32.47	32.02
33.00°	31.86	32.34	32.07	31.71	31.46	31.83	32.17	31.77

TEST RESULT

Name :	SALED AUSTRALIA
File :	SA 3LED SPECTRUM(2835)12V 90mA. IES
Report :	
Catalog :	
LampType :	Point
No. of lamps :	1
Lamp flux :	96.87 lm
Date :	2018-09-11
Comments :	

Intensity [cd] [2/6]

Θ/Φ	240.00°	270.00°	300.00°	330.00°	360.00°
0.00°	38.39	38.26	38.23	38.28	38.27
1.00°	38.37	38.31	38.29	38.14	38.52
2.00°	38.40	38.32	38.54	38.55	38.44
3.00°	38.33	38.33	38.30	38.43	38.41
4.00°	38.21	38.34	38.31	38.23	38.30
5.00°	38.18	38.22	38.30	38.23	38.23
6.00°	38.04	38.07	38.27	38.39	38.34
7.00°	37.93	37.99	38.04	38.26	38.24
8.00°	37.74	37.83	38.04	38.08	37.97
9.00°	37.70	37.71	37.85	38.02	37.90
10.00°	37.48	37.56	37.66	37.70	37.67
11.00°	37.32	37.34	37.46	37.80	37.56
12.00°	37.22	37.09	37.56	37.43	37.33
13.00°	36.86	36.77	36.99	37.28	37.08
14.00°	36.65	36.55	36.90	37.07	36.89
15.00°	36.34	36.35	36.52	36.89	36.62
16.00°	36.16	35.95	36.27	36.71	36.45
17.00°	36.08	35.69	36.15	36.29	36.32
18.00°	35.61	35.44	35.73	36.25	36.10
19.00°	35.35	35.29	35.40	35.75	35.75
20.00°	35.16	35.00	35.18	35.79	35.44
21.00°	34.81	34.83	34.78	35.45	35.39
22.00°	34.52	34.51	34.83	35.17	35.27
23.00°	34.35	34.42	34.39	34.80	34.95
24.00°	34.05	34.09	34.08	34.77	34.54
25.00°	33.85	33.81	33.97	34.35	34.26
26.00°	33.55	33.58	33.72	34.11	34.13
27.00°	33.29	33.30	33.20	33.85	33.74
28.00°	33.06	32.95	33.26	33.58	33.45
29.00°	32.74	32.57	32.67	33.12	33.16
30.00°	32.60	32.15	32.61	32.76	32.84
31.00°	32.13	31.72	32.33	32.34	32.60
32.00°	31.88	31.41	31.89	32.31	32.22
33.00°	31.44	31.19	31.41	31.87	31.86

TEST RESULT

Name :	SALED AUSTRALIA
File :	SA 3LED SPECTRUM(2835)12V 90mA. IES
Report :	
Catalog :	
LampType :	Point
No. of lamps :	1
Lamp flux :	96.87 lm
Date :	2018-09-11
Comments :	

Intensity [cd] [3/6]

Θ/Φ	0.00°	30.00°	60.00°	90.00°	120.00°	150.00°	180.00°	210.00°
34.00°	31.68	32.02	31.73	31.37	31.19	31.36	31.87	31.54
35.00°	31.26	31.68	31.41	31.23	30.85	30.97	31.51	31.12
36.00°	31.04	31.44	31.00	30.75	30.45	30.64	31.39	30.76
37.00°	30.85	31.11	30.67	30.49	30.14	30.11	30.85	30.44
38.00°	30.38	30.79	30.37	30.05	29.67	29.94	30.46	30.11
39.00°	30.05	30.40	29.98	29.73	29.47	29.39	30.11	29.80
40.00°	29.56	30.09	29.84	29.39	28.86	29.13	29.58	29.43
41.00°	29.19	29.64	29.37	29.07	28.65	28.82	29.31	28.93
42.00°	28.68	29.27	29.04	28.66	28.21	28.50	28.88	28.67
43.00°	28.36	28.81	28.69	28.34	27.91	27.86	28.74	28.13
44.00°	27.66	28.44	28.25	27.95	27.45	27.40	28.10	27.69
45.00°	27.04	28.05	27.84	27.43	27.05	26.88	27.85	27.17
46.00°	26.73	27.50	27.49	27.07	26.52	26.53	27.27	26.79
47.00°	25.88	26.83	27.16	26.58	26.08	26.12	26.73	26.26
48.00°	25.32	26.03	26.39	26.18	25.52	25.38	26.34	25.78
49.00°	24.49	25.59	25.85	25.66	24.98	24.82	25.55	25.18
50.00°	23.62	24.78	25.26	25.22	24.54	24.15	25.00	24.31
51.00°	22.49	23.99	24.51	24.58	23.97	23.71	24.28	23.67
52.00°	21.48	23.10	23.93	23.82	23.31	22.95	23.58	22.77
53.00°	20.26	22.24	23.08	22.71	22.55	22.13	22.78	21.84
54.00°	18.95	21.19	21.60	21.33	21.74	21.22	21.94	21.01
55.00°	17.64	20.08	20.02	19.46	20.96	20.29	21.04	19.77
56.00°	16.26	18.85	18.13	17.38	19.93	19.38	20.11	18.61
57.00°	14.83	17.44	16.05	15.56	18.88	18.30	19.08	17.37
58.00°	13.49	16.05	14.12	14.02	17.60	17.10	17.85	16.03
59.00°	12.00	14.49	12.41	12.56	16.16	15.77	16.62	14.66
60.00°	10.54	12.87	10.85	11.31	14.71	14.32	15.24	13.22
61.00°	9.21	11.31	9.33	10.14	13.04	12.78	13.84	11.83
62.00°	7.86	9.70	7.99	8.80	11.47	11.19	12.50	10.39
63.00°	6.74	8.18	6.76	7.64	9.74	9.79	11.11	9.00
64.00°	5.83	6.87	5.68	6.54	8.16	8.34	9.70	7.75
65.00°	4.93	5.70	4.74	5.45	6.67	7.06	8.54	6.56
66.00°	4.24	4.78	3.94	4.59	5.62	5.99	7.14	5.68
67.00°	3.70	4.06	3.32	3.69	4.63	4.83	6.12	4.82
68.00°	3.36	3.47	2.86	2.87	3.85	4.14	5.16	4.25

Measured by Checked by Approved by SALED AUSTRALIA

TEST RESULT

Name :	SALED AUSTRALIA
File :	SA 3LED SPECTRUM(2835)12V 90mA. IES
Report :	
Catalog :	
LampType :	Point
No. of lamps :	1
Lamp flux :	96.87 lm
Date :	2018-09-11
Comments :	

Intensity [cd] [4/6]

Θ/Φ	240.00°	270.00°	300.00°	330.00°	360.00°
34.00°	31.03	30.94	31.23	31.73	31.68
35.00°	30.73	30.53	30.91	31.44	31.26
36.00°	30.40	30.24	30.67	31.26	31.04
37.00°	30.07	29.90	30.26	30.44	30.85
38.00°	29.76	29.73	29.91	30.21	30.38
39.00°	29.39	29.35	29.50	29.73	30.05
40.00°	29.10	29.03	29.21	29.60	29.56
41.00°	28.70	28.58	28.97	29.18	29.19
42.00°	28.41	28.22	28.36	28.79	28.68
43.00°	27.94	27.84	28.18	28.56	28.36
44.00°	27.49	27.53	27.62	27.91	27.66
45.00°	27.05	26.89	27.09	27.53	27.04
46.00°	26.50	26.39	26.77	26.97	26.73
47.00°	26.30	25.89	26.11	26.34	25.88
48.00°	25.40	25.42	25.56	25.58	25.32
49.00°	24.77	24.63	24.78	25.16	24.49
50.00°	24.20	23.94	24.08	24.16	23.62
51.00°	23.47	22.99	23.41	23.46	22.49
52.00°	22.35	22.04	22.55	22.49	21.48
53.00°	21.45	21.07	21.34	21.57	20.26
54.00°	20.45	19.83	20.43	20.28	18.95
55.00°	19.24	18.08	19.15	19.11	17.64
56.00°	17.94	16.05	17.87	17.77	16.26
57.00°	16.64	13.82	16.22	16.39	14.83
58.00°	15.31	11.86	14.65	14.98	13.49
59.00°	13.84	10.26	12.90	13.48	12.00
60.00°	12.40	8.89	11.03	11.87	10.54
61.00°	10.98	7.81	9.40	10.45	9.21
62.00°	9.53	6.84	7.97	9.06	7.86
63.00°	8.22	5.95	6.76	7.68	6.74
64.00°	7.04	5.08	5.74	6.51	5.83
65.00°	6.06	4.37	4.79	5.53	4.93
66.00°	5.19	3.76	4.05	4.66	4.24
67.00°	4.54	3.26	3.46	4.04	3.70
68.00°	3.98	2.91	3.11	3.59	3.36

Measured by Checked by Approved by SALED AUSTRALIA

TEST RESULT

Name :	SALED AUSTRALIA
File :	SA 3LED SPECTRUM(2835)12V 90mA. IES
Report :	
Catalog :	
LampType :	Point
No. of lamps :	1
Lamp flux :	96.87 lm
Date :	2018-09-11
Comments :	

Intensity [cd] [5/6]

Θ/Φ	0.00°	30.00°	60.00°	90.00°	120.00°	150.00°	180.00°	210.00°
69.00°	3.10	3.07	2.56	2.35	3.27	3.50	4.43	3.77
70.00°	2.88	2.79	2.35	2.13	3.00	3.07	3.83	3.41
71.00°	2.71	2.65	2.17	2.00	2.82	2.67	3.28	3.15
72.00°	2.60	2.29	2.03	1.80	2.55	2.40	2.89	2.73
73.00°	2.46	2.12	1.90	1.55	2.32	2.24	2.65	2.49
74.00°	2.35	1.99	1.67	1.44	2.13	2.06	2.42	2.36
75.00°	2.22	1.82	1.47	1.39	1.87	1.96	2.27	2.17
76.00°	2.12	1.70	1.37	1.29	1.66	1.83	2.16	2.12
77.00°	1.97	1.60	1.28	1.16	1.40	1.77	2.03	1.99
78.00°	1.86	1.52	1.11	1.00	1.26	1.73	1.94	1.89
79.00°	1.75	1.44	1.00	0.94	1.10	1.63	1.83	1.73
80.00°	1.59	1.38	1.00	0.90	0.96	1.35	1.69	1.53
81.00°	1.48	1.20	0.90	0.87	0.96	1.11	1.49	1.31
82.00°	1.38	1.00	0.87	0.84	0.90	1.00	1.38	1.15
83.00°	1.29	0.95	0.84	0.87	0.84	1.00	1.27	1.10
84.00°	1.05	0.91	0.86	0.83	0.87	0.91	1.10	1.00
85.00°	0.92	0.88	0.83	0.89	0.83	0.92	1.02	0.97
86.00°	0.92	0.87	0.85	0.83	0.85	0.85	0.98	0.96
87.00°	0.95	0.86	0.81	0.85	0.83	0.85	0.95	0.93
88.00°	0.87	0.86	0.87	0.84	0.85	0.86	0.95	0.89
89.00°	0.88	0.85	0.86	0.84	0.80	0.86	0.93	0.88
90.00°	0.88	0.89	0.85	0.85	0.86	0.87	0.90	0.86

TEST RESULT

Name :	SALED AUSTRALIA
File :	SA 3LED SPECTRUM(2835)12V 90mA. IES
Report :	
Catalog :	
LampType :	Point
No. of lamps :	1
Lamp flux :	96.87 lm
Date :	2018-09-11
Comments :	

Intensity [cd] [6/6]

Θ/Φ	240.00°	270.00°	300.00°	330.00°	360.00°
69.00°	3.60	2.66	2.83	3.27	3.10
70.00°	3.26	2.44	2.61	3.03	2.88
71.00°	3.05	2.27	2.41	2.85	2.71
72.00°	2.87	2.18	2.32	2.71	2.60
73.00°	2.79	2.07	2.17	2.56	2.46
74.00°	2.68	1.80	2.09	2.26	2.35
75.00°	2.55	1.68	2.02	2.03	2.22
76.00°	2.40	1.68	1.93	1.83	2.12
77.00°	2.22	1.35	1.76	1.68	1.97
78.00°	1.94	1.24	1.51	1.59	1.86
79.00°	1.68	1.13	1.29	1.49	1.75
80.00°	1.40	1.05	1.14	1.41	1.59
81.00°	1.14	1.02	1.07	1.29	1.48
82.00°	1.05	0.92	1.02	1.16	1.38
83.00°	0.97	0.90	0.97	1.08	1.29
84.00°	0.94	0.90	0.90	1.01	1.05
85.00°	0.90	0.88	0.88	0.95	0.92
86.00°	0.90	0.87	0.88	0.92	0.92
87.00°	0.89	0.83	0.86	0.93	0.95
88.00°	0.87	0.85	0.87	0.88	0.87
89.00°	0.85	0.86	0.86	0.88	0.88
90.00°	0.84	0.87	0.88	0.87	0.88

TEST RESULT

Name :	SALED AUSTRALIA
File :	SA 3LED SPECTRUM(2835)12V 90mA. IES
Report :	
Catalog :	
LampType :	Point
No. of lamps :	1
Lamp flux :	96.87 lm
Date :	2018-09-11
Comments :	

Flux Data [1/3]

Elevation	Cone	Lumens	Cumulative	Lamp %	Luminaire %
0.0°	0.0° - 0.5°	0.0	0.0	0.0	0.0
1.0°	0.5° - 1.5°	0.1	0.1	0.1	0.1
2.0°	1.5° - 2.5°	0.1	0.2	0.2	0.2
3.0°	2.5° - 3.5°	0.2	0.4	0.5	0.5
4.0°	3.5° - 4.5°	0.3	0.7	0.8	0.8
5.0°	4.5° - 5.5°	0.4	1.1	1.1	1.1
6.0°	5.5° - 6.5°	0.4	1.5	1.6	1.6
7.0°	6.5° - 7.5°	0.5	2.1	2.1	2.1
8.0°	7.5° - 8.5°	0.6	2.6	2.7	2.7
9.0°	8.5° - 9.5°	0.6	3.3	3.4	3.4
10.0°	9.5° - 10.5°	0.7	4.0	4.1	4.1
11.0°	10.5° - 11.5°	0.8	4.8	4.9	4.9
12.0°	11.5° - 12.5°	0.9	5.6	5.8	5.8
13.0°	12.5° - 13.5°	0.9	6.5	6.8	6.8
14.0°	13.5° - 14.5°	1.0	7.5	7.8	7.8
15.0°	14.5° - 15.5°	1.0	8.6	8.8	8.8
16.0°	15.5° - 16.5°	1.1	9.7	10.0	10.0
17.0°	16.5° - 17.5°	1.2	10.8	11.2	11.2
18.0°	17.5° - 18.5°	1.2	12.0	12.4	12.4
19.0°	18.5° - 19.5°	1.3	13.3	13.7	13.7
20.0°	19.5° - 20.5°	1.3	14.6	15.1	15.1
21.0°	20.5° - 21.5°	1.4	16.0	16.5	16.6
22.0°	21.5° - 22.5°	1.4	17.5	18.0	18.0
23.0°	22.5° - 23.5°	1.5	19.0	19.6	19.6
24.0°	23.5° - 24.5°	1.5	20.5	21.2	21.2
25.0°	24.5° - 25.5°	1.6	22.1	22.8	22.8
26.0°	25.5° - 26.5°	1.6	23.7	24.5	24.5
27.0°	26.5° - 27.5°	1.7	25.4	26.2	26.2
28.0°	27.5° - 28.5°	1.7	27.1	28.0	28.0
29.0°	28.5° - 29.5°	1.8	28.9	29.8	29.8
30.0°	29.5° - 30.5°	1.8	30.6	31.6	31.7
31.0°	30.5° - 31.5°	1.8	32.5	33.5	33.5
32.0°	31.5° - 32.5°	1.9	34.3	35.5	35.5
33.0°	32.5° - 33.5°	1.9	36.2	37.4	37.4

TEST RESULT

Name :	SALED AUSTRALIA
File :	SA 3LED SPECTRUM(2835)12V 90mA. IES
Report :	
Catalog :	
LampType :	Point
No. of lamps :	1
Lamp flux :	96.87 lm
Date :	2018-09-11
Comments :	

Flux Data [2/3]

Elevation	Cone	Lumens	Cumulative	Lamp %	Luminaire %
34.0°	33.5° - 34.5°	1.9	38.2	39.4	39.4
35.0°	34.5° - 35.5°	2.0	40.1	41.4	41.4
36.0°	35.5° - 36.5°	2.0	42.1	43.5	43.5
37.0°	36.5° - 37.5°	2.0	44.1	45.6	45.6
38.0°	37.5° - 38.5°	2.0	46.2	47.7	47.7
39.0°	38.5° - 39.5°	2.1	48.2	49.8	49.8
40.0°	39.5° - 40.5°	2.1	50.3	51.9	51.9
41.0°	40.5° - 41.5°	2.1	52.4	54.1	54.1
42.0°	41.5° - 42.5°	2.1	54.5	56.2	56.3
43.0°	42.5° - 43.5°	2.1	56.6	58.4	58.4
44.0°	43.5° - 44.5°	2.1	58.7	60.6	60.6
45.0°	44.5° - 45.5°	2.1	60.8	62.8	62.8
46.0°	45.5° - 46.5°	2.1	62.9	65.0	65.0
47.0°	46.5° - 47.5°	2.1	65.1	67.2	67.2
48.0°	47.5° - 48.5°	2.1	67.2	69.3	69.4
49.0°	48.5° - 49.5°	2.1	69.2	71.5	71.5
50.0°	49.5° - 50.5°	2.1	71.3	73.6	73.6
51.0°	50.5° - 51.5°	2.0	73.3	75.7	75.7
52.0°	51.5° - 52.5°	2.0	75.3	77.7	77.8
53.0°	52.5° - 53.5°	1.9	77.2	79.7	79.7
54.0°	53.5° - 54.5°	1.8	79.1	81.6	81.6
55.0°	54.5° - 55.5°	1.8	80.8	83.4	83.5
56.0°	55.5° - 56.5°	1.7	82.5	85.1	85.2
57.0°	56.5° - 57.5°	1.5	84.0	86.7	86.8
58.0°	57.5° - 58.5°	1.4	85.4	88.2	88.2
59.0°	58.5° - 59.5°	1.3	86.7	89.5	89.6
60.0°	59.5° - 60.5°	1.2	87.9	90.7	90.8
61.0°	60.5° - 61.5°	1.0	88.9	91.8	91.8
62.0°	61.5° - 62.5°	0.9	89.8	92.7	92.8
63.0°	62.5° - 63.5°	0.8	90.6	93.6	93.6
64.0°	63.5° - 64.5°	0.7	91.3	94.3	94.3
65.0°	64.5° - 65.5°	0.6	91.9	94.9	94.9
66.0°	65.5° - 66.5°	0.5	92.4	95.4	95.4
67.0°	66.5° - 67.5°	0.4	92.8	95.8	95.9
68.0°	67.5° - 68.5°	0.4	93.2	96.2	96.2

Measured by Checked by Approved by SALED AUSTRALIA

TEST RESULT

Name :	SALED AUSTRALIA
File :	SA 3LED SPECTRUM(2835)12V 90mA. IES
Report :	
Catalog :	
LampType :	Point
No. of lamps :	1
Lamp flux :	96.87 lm
Date :	2018-09-11
Comments :	

Flux Data [3/3]

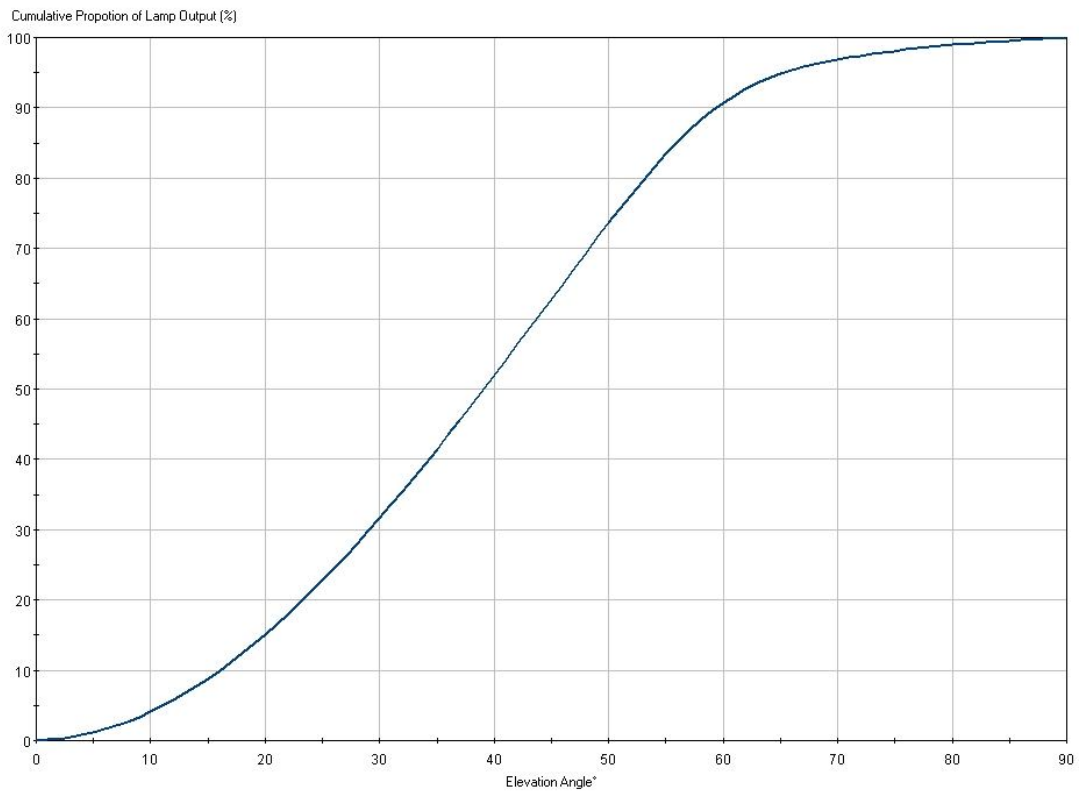
Elevation	Cone	Lumens	Cumulative	Lamp %	Luminaire %
69.0°	68.5° - 69.5°	0.3	93.5	96.5	96.6
70.0°	69.5° - 70.5°	0.3	93.8	96.8	96.9
71.0°	70.5° - 71.5°	0.3	94.1	97.1	97.2
72.0°	71.5° - 72.5°	0.3	94.3	97.4	97.4
73.0°	72.5° - 73.5°	0.2	94.6	97.6	97.7
74.0°	73.5° - 74.5°	0.2	94.8	97.9	97.9
75.0°	74.5° - 75.5°	0.2	95.0	98.1	98.1
76.0°	75.5° - 76.5°	0.2	95.2	98.3	98.3
77.0°	76.5° - 77.5°	0.2	95.4	98.5	98.5
78.0°	77.5° - 78.5°	0.2	95.6	98.6	98.7
79.0°	78.5° - 79.5°	0.2	95.7	98.8	98.8
80.0°	79.5° - 80.5°	0.1	95.8	98.9	99.0
81.0°	80.5° - 81.5°	0.1	96.0	99.1	99.1
82.0°	81.5° - 82.5°	0.1	96.1	99.2	99.2
83.0°	82.5° - 83.5°	0.1	96.2	99.3	99.3
84.0°	83.5° - 84.5°	0.1	96.3	99.4	99.5
85.0°	84.5° - 85.5°	0.1	96.4	99.5	99.6
86.0°	85.5° - 86.5°	0.1	96.5	99.6	99.7
87.0°	86.5° - 87.5°	0.1	96.6	99.7	99.8
88.0°	87.5° - 88.5°	0.1	96.7	99.8	99.9
89.0°	88.5° - 89.5°	0.1	96.8	99.9	100.0
90.0°	89.5° - 90.0°	0.0	96.8	100.0	100.0

Light Output Ratio Luminaire(LORL) = 100.0%
DLOR = 100.0% ULOR = 0.0%

TEST RESULT

Name :	SALED AUSTRLIA
File :	SA 3LED SPECTRUM(2835)12V 90mA. IES
Report :	
Catalog :	
LampType :	Point
No. of lamps :	1
Lamp flux :	96.87 lm
Date :	2018-09-11
Comments :	

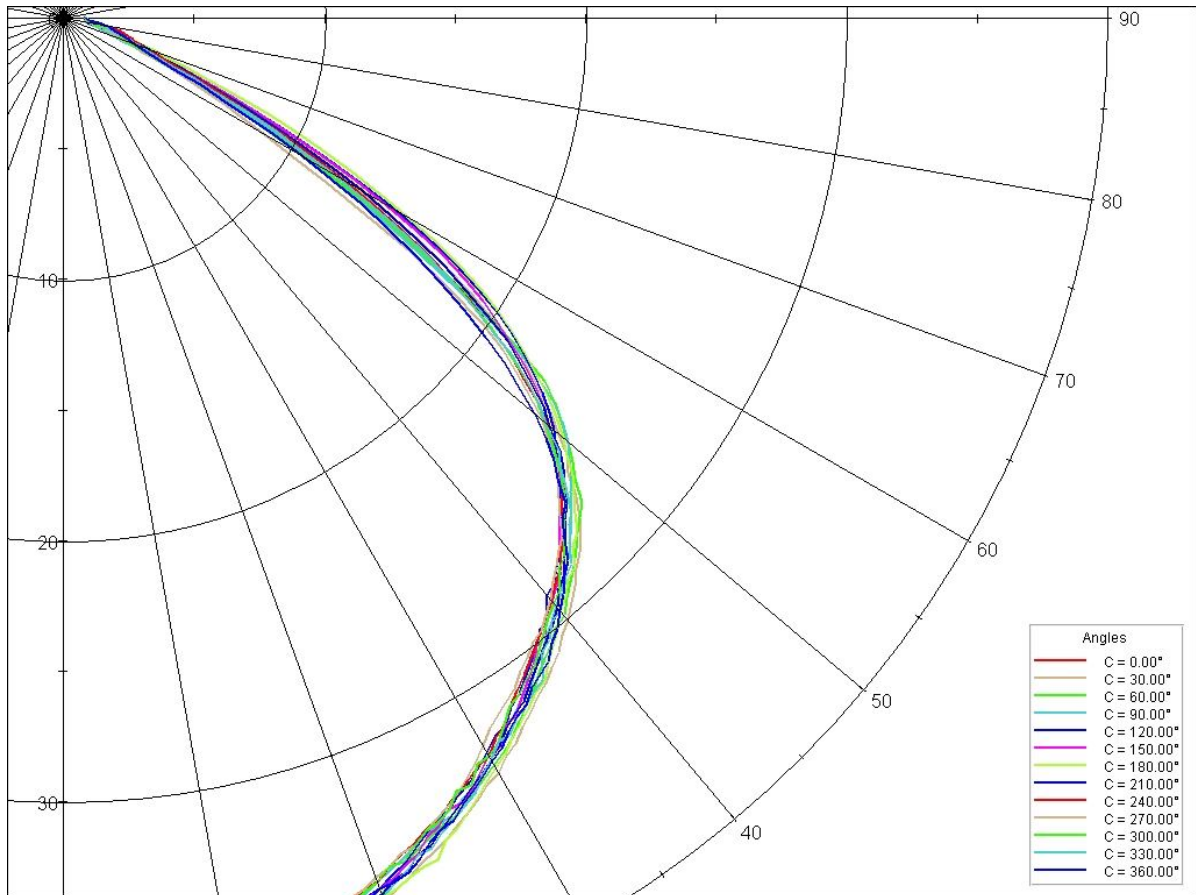
Flux Diagram



TEST RESULT

Name :	SALED AUSTRALIA
File :	SA 3LED SPECTRUM(2835)12V 90mA. IES
Report :	
Catalog :	
LampType :	Point
No. of lamps :	1
Lamp flux :	96.87 lm
Date :	2018-09-11
Comments :	

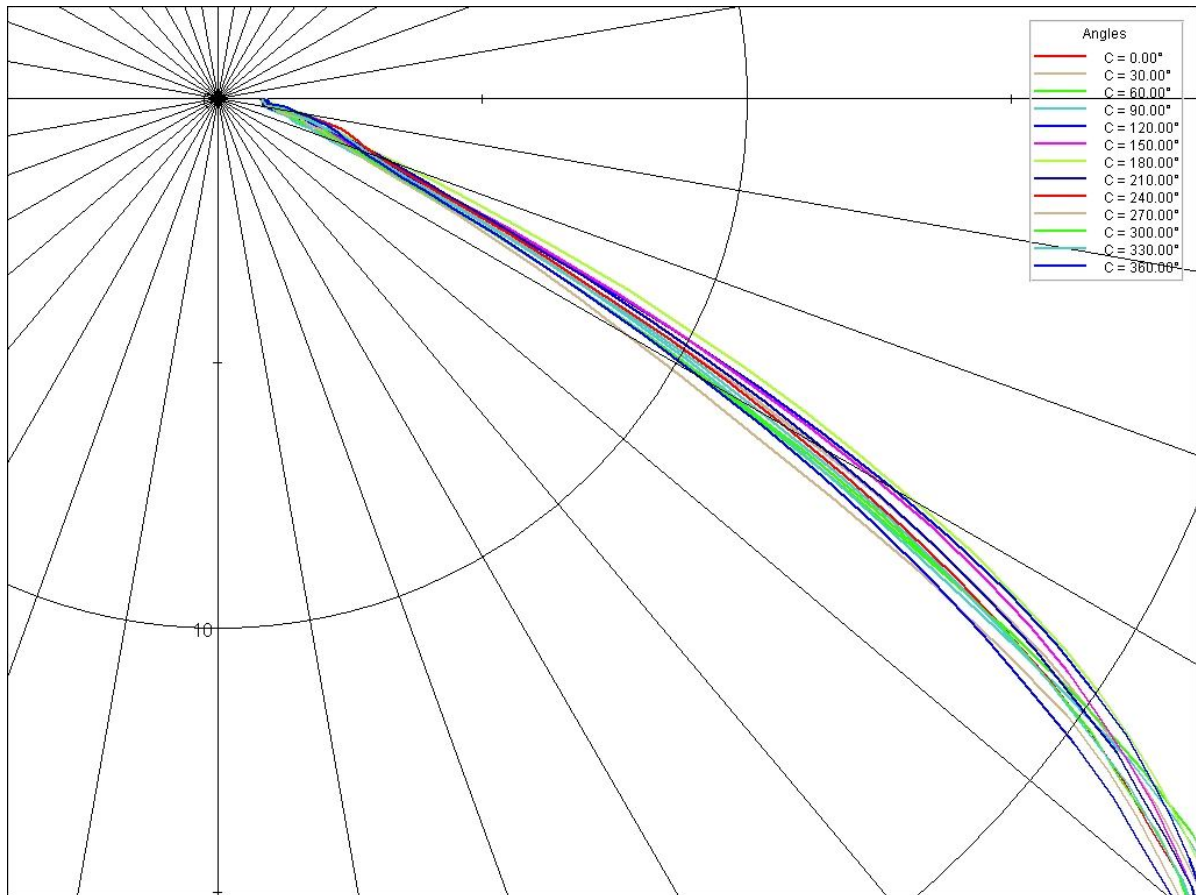
Polar Diagram



TEST RESULT

Name :	SALED AUSTRALIA
File :	SA 3LED SPECTRUM(2835)12V 90mA. IES
Report :	
Catalog :	
LampType :	Point
No. of lamps :	1
Lamp flux :	96.87 lm
Date :	2018-09-11
Comments :	

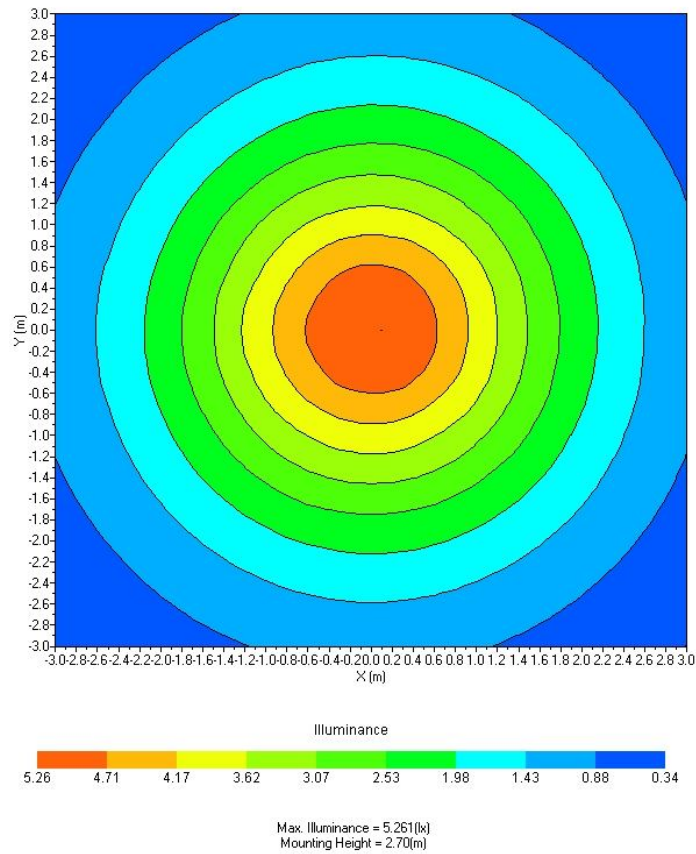
Polar Diagram (10%)



TEST RESULT

Name :	SALED AUSTRALIA
File :	SA 3LED SPECTRUM(2835)12V 90mA. IES
Report :	
Catalog :	
LampType :	Point
No. of lamps :	1
Lamp flux :	96.87 lm
Date :	2018-09-11
Comments :	

ISO Lux Diagram

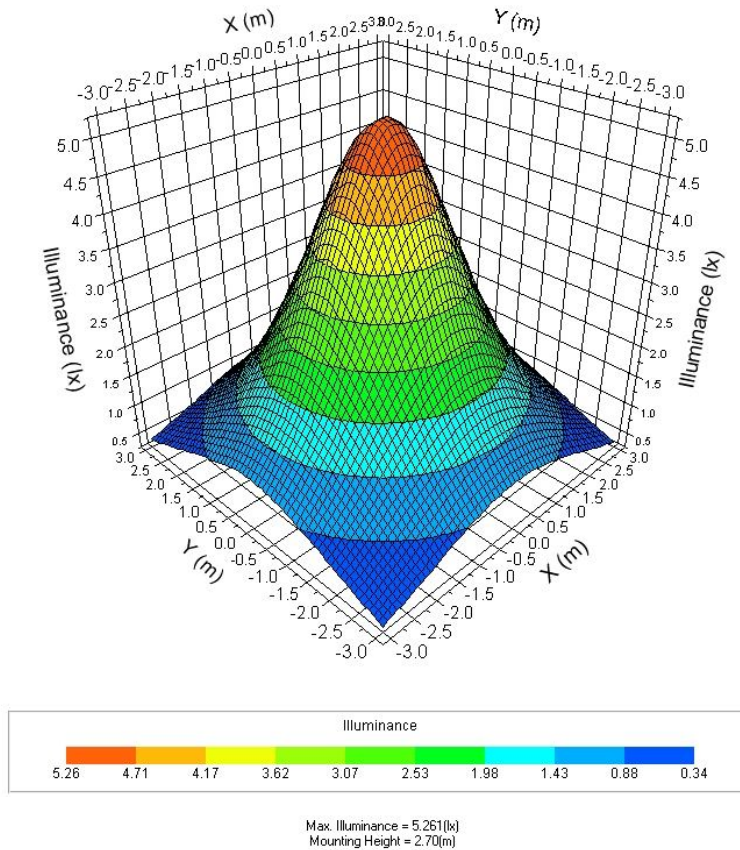


Measured by Checked by Approved by SALED AUSTRALIA

TEST RESULT

Name :	SALED AUSTRALIA
File :	SA 3LED SPECTRUM(2835)12V 90mA. IES
Report :	
Catalog :	
LampType :	Point
No. of lamps :	1
Lamp flux :	96.87 lm
Date :	2018-09-11
Comments :	

3D Lux Web

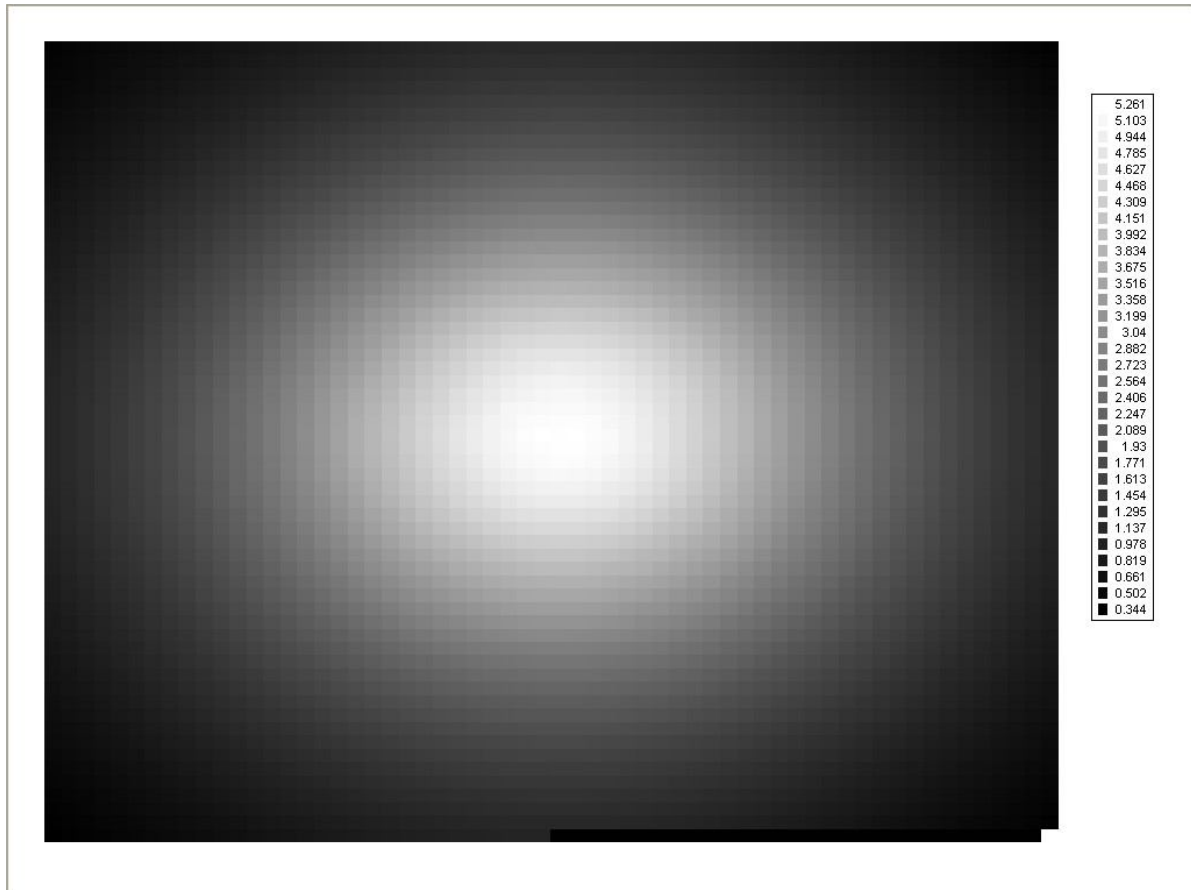


Measured by Checked by Approved by SALED AUSTRALIA

TEST RESULT

Name :	SALED AUSTRALIA
File :	SA 3LED SPECTRUM(2835)12V 90mA. IES
Report :	
Catalog :	
LampType :	Point
No. of lamps :	1
Lamp flux :	96.87 lm
Date :	2018-09-11
Comments :	

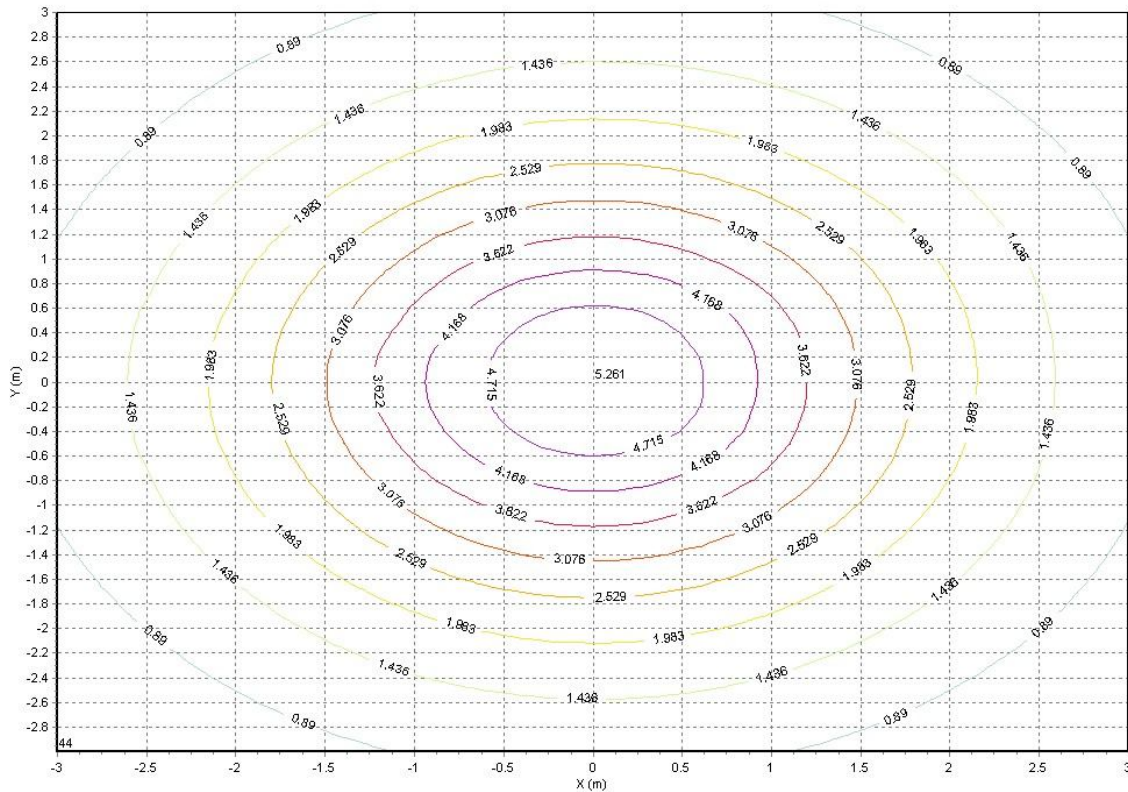
Grayed Illuminance



TEST RESULT

Name :	SALED AUSTRALIA
File :	SA 3LED SPECTRUM(2835)12V 90mA. IES
Report :	
Catalog :	
LampType :	Point
No. of lamps :	1
Lamp flux :	96.87 lm
Date :	2018-09-11
Comments :	

IsoLux Contour



Max. Illuminance = 5.261(lx), Mounting Height = 2.70(m)

TEST RESULT

Name :	SALED AUSTRALIA
File :	SA 3LED SPECTRUM(2835)12V 90mA. IES
Report :	
Catalog :	
LampType :	Point
No. of lamps :	1
Lamp flux :	96.87 lm
Date :	2018-09-11
Comments :	

Illuminance Grid [1/15]

Y/X	-3.00	-2.90	-2.80	-2.70	-2.60	-2.50	-2.40	-2.30	-2.20	-2.10	-2.00	-1.90	-1.80	-1.70
3.00	0.39	0.42	0.44	0.47	0.50	0.52	0.55	0.58	0.60	0.63	0.66	0.69	0.72	0.75
2.90	0.40	0.44	0.47	0.50	0.53	0.55	0.58	0.61	0.64	0.67	0.71	0.74	0.77	0.80
2.80	0.43	0.46	0.50	0.53	0.56	0.59	0.62	0.65	0.68	0.72	0.75	0.79	0.82	0.86
2.70	0.45	0.48	0.51	0.56	0.59	0.62	0.65	0.69	0.73	0.76	0.80	0.84	0.87	0.91
2.60	0.48	0.51	0.54	0.58	0.62	0.66	0.69	0.73	0.77	0.81	0.85	0.89	0.93	0.97
2.50	0.51	0.54	0.57	0.61	0.65	0.69	0.73	0.78	0.82	0.86	0.90	0.94	0.98	1.03
2.40	0.53	0.57	0.61	0.65	0.69	0.73	0.78	0.82	0.86	0.91	0.95	1.00	1.04	1.09
2.30	0.56	0.60	0.64	0.68	0.73	0.77	0.82	0.86	0.91	0.96	1.01	1.06	1.11	1.16
2.20	0.59	0.63	0.67	0.72	0.77	0.81	0.86	0.90	0.96	1.01	1.06	1.12	1.18	1.23
2.10	0.62	0.66	0.71	0.76	0.81	0.85	0.90	0.95	1.01	1.07	1.13	1.19	1.24	1.31
2.00	0.65	0.70	0.74	0.79	0.84	0.89	0.95	1.00	1.06	1.13	1.19	1.25	1.32	1.38
1.90	0.68	0.73	0.78	0.83	0.88	0.93	0.99	1.05	1.12	1.19	1.25	1.32	1.39	1.46
1.80	0.71	0.76	0.81	0.86	0.92	0.98	1.04	1.11	1.18	1.24	1.31	1.39	1.46	1.54
1.70	0.74	0.79	0.85	0.90	0.96	1.02	1.09	1.16	1.23	1.30	1.38	1.45	1.54	1.62
1.60	0.77	0.82	0.88	0.94	1.00	1.07	1.14	1.21	1.28	1.36	1.44	1.53	1.62	1.71
1.50	0.80	0.85	0.91	0.97	1.04	1.12	1.19	1.26	1.34	1.42	1.51	1.61	1.70	1.79
1.40	0.83	0.88	0.94	1.01	1.08	1.16	1.23	1.31	1.40	1.49	1.59	1.68	1.77	1.87
1.30	0.85	0.91	0.98	1.05	1.13	1.20	1.28	1.36	1.45	1.56	1.65	1.75	1.85	1.96
1.20	0.88	0.94	1.01	1.09	1.17	1.24	1.32	1.41	1.51	1.62	1.72	1.82	1.92	2.04
1.10	0.90	0.97	1.04	1.12	1.20	1.28	1.37	1.46	1.57	1.67	1.78	1.88	2.01	2.12
1.00	0.93	1.00	1.07	1.16	1.24	1.32	1.41	1.51	1.63	1.73	1.83	1.96	2.07	2.21
0.90	0.95	1.02	1.10	1.19	1.27	1.36	1.45	1.56	1.67	1.78	1.89	2.02	2.14	2.29
0.80	0.98	1.05	1.13	1.21	1.30	1.39	1.49	1.61	1.71	1.83	1.95	2.07	2.22	2.36
0.70	1.00	1.09	1.16	1.25	1.33	1.42	1.53	1.64	1.75	1.87	2.01	2.13	2.28	2.43
0.60	1.02	1.11	1.19	1.28	1.37	1.47	1.57	1.69	1.79	1.91	2.05	2.19	2.34	2.49
0.50	1.04	1.12	1.20	1.30	1.39	1.50	1.60	1.71	1.83	1.97	2.10	2.26	2.39	2.56
0.40	1.06	1.13	1.22	1.32	1.41	1.52	1.62	1.74	1.86	2.00	2.14	2.30	2.44	2.61

Measured by Checked by Approved by SALED AUSTRALIA

TEST RESULT

Name :	SALED AUSTRALIA
File :	SA 3LED SPECTRUM(2835)12V 90mA. IES
Report :	
Catalog :	
LampType :	Point
No. of lamps :	1
Lamp flux :	96.87 lm
Date :	2018-09-11
Comments :	

Illuminance Grid [2/15]

Y/X	-1.60	-1.50	-1.40	-1.30	-1.20	-1.10	-1.00	-0.90	-0.80	-0.70	-0.60	-0.50	-0.40	-0.30
3.00	0.78	0.81	0.84	0.86	0.89	0.92	0.94	0.96	0.98	1.00	1.02	1.04	1.05	1.06
2.90	0.83	0.87	0.90	0.92	0.95	0.98	1.00	1.03	1.05	1.08	1.10	1.11	1.12	1.14
2.80	0.89	0.92	0.95	0.98	1.02	1.05	1.08	1.10	1.13	1.15	1.17	1.19	1.21	1.22
2.70	0.94	0.98	1.02	1.05	1.09	1.12	1.15	1.18	1.21	1.24	1.26	1.28	1.30	1.31
2.60	1.01	1.05	1.09	1.13	1.16	1.20	1.23	1.27	1.30	1.33	1.35	1.38	1.40	1.41
2.50	1.07	1.12	1.16	1.20	1.24	1.28	1.32	1.36	1.39	1.42	1.45	1.48	1.50	1.52
2.40	1.14	1.19	1.24	1.28	1.33	1.37	1.41	1.45	1.49	1.52	1.56	1.58	1.60	1.62
2.30	1.21	1.27	1.32	1.37	1.42	1.47	1.51	1.55	1.59	1.62	1.67	1.70	1.72	1.74
2.20	1.29	1.35	1.40	1.46	1.51	1.56	1.61	1.66	1.70	1.74	1.77	1.81	1.84	1.86
2.10	1.37	1.43	1.49	1.55	1.60	1.66	1.72	1.76	1.81	1.86	1.91	1.94	1.97	1.99
2.00	1.45	1.51	1.58	1.64	1.71	1.76	1.82	1.89	1.94	1.98	2.03	2.08	2.12	2.14
1.90	1.53	1.60	1.67	1.74	1.80	1.88	1.94	2.00	2.07	2.13	2.17	2.22	2.26	2.29
1.80	1.62	1.69	1.76	1.85	1.93	1.99	2.07	2.14	2.20	2.26	2.32	2.37	2.41	2.44
1.70	1.70	1.78	1.87	1.95	2.03	2.12	2.20	2.27	2.35	2.41	2.47	2.52	2.57	2.61
1.60	1.79	1.88	1.97	2.06	2.16	2.24	2.33	2.41	2.49	2.56	2.63	2.69	2.74	2.78
1.50	1.88	1.98	2.08	2.18	2.28	2.37	2.47	2.55	2.65	2.72	2.78	2.85	2.92	2.96
1.40	1.98	2.07	2.19	2.29	2.40	2.50	2.61	2.71	2.79	2.88	2.96	3.03	3.10	3.16
1.30	2.06	2.18	2.30	2.41	2.53	2.64	2.74	2.85	2.95	3.05	3.14	3.20	3.27	3.34
1.20	2.15	2.28	2.40	2.54	2.65	2.77	2.88	3.00	3.12	3.21	3.31	3.39	3.45	3.51
1.10	2.25	2.38	2.52	2.64	2.78	2.90	3.03	3.16	3.27	3.38	3.47	3.56	3.64	3.70
1.00	2.34	2.48	2.62	2.76	2.89	3.03	3.18	3.30	3.42	3.54	3.65	3.75	3.84	3.90
0.90	2.43	2.58	2.71	2.86	3.01	3.17	3.30	3.44	3.57	3.71	3.84	3.94	4.03	4.09
0.80	2.51	2.65	2.82	2.96	3.14	3.29	3.43	3.57	3.74	3.88	4.00	4.10	4.21	4.29
0.70	2.59	2.74	2.89	3.07	3.24	3.38	3.54	3.72	3.87	4.02	4.15	4.28	4.38	4.48
0.60	2.65	2.83	2.98	3.17	3.32	3.50	3.67	3.84	4.00	4.15	4.29	4.44	4.54	4.63
0.50	2.71	2.88	3.05	3.25	3.40	3.58	3.78	3.95	4.11	4.27	4.42	4.54	4.67	4.76
0.40	2.78	2.95	3.13	3.31	3.49	3.68	3.86	4.04	4.21	4.37	4.48	4.65	4.78	4.88

Measured by Checked by Approved by SALED AUSTRALIA

TEST RESULT

Name :	SALED AUSTRALIA
File :	SA 3LED SPECTRUM(2835)12V 90mA. IES
Report :	
Catalog :	
LampType :	Point
No. of lamps :	1
Lamp flux :	96.87 lm
Date :	2018-09-11
Comments :	

Illuminance Grid [3/15]

Y/X	-0.20	-0.10	0.00	0.10	0.20	0.30	0.40	0.50	0.60	0.70	0.80	0.90	1.00	1.10
3.00	1.07	1.07	1.07	1.07	1.07	1.07	1.06	1.05	1.03	1.02	1.00	0.98	0.96	0.94
2.90	1.14	1.15	1.15	1.15	1.15	1.14	1.14	1.13	1.11	1.09	1.08	1.05	1.03	1.00
2.80	1.23	1.24	1.24	1.24	1.24	1.23	1.22	1.21	1.19	1.18	1.16	1.14	1.11	1.08
2.70	1.32	1.33	1.33	1.33	1.33	1.32	1.31	1.29	1.28	1.26	1.24	1.22	1.19	1.16
2.60	1.42	1.43	1.43	1.43	1.43	1.42	1.41	1.39	1.37	1.35	1.32	1.30	1.27	1.24
2.50	1.53	1.54	1.54	1.54	1.53	1.53	1.51	1.49	1.47	1.45	1.42	1.39	1.35	1.32
2.40	1.64	1.65	1.65	1.65	1.64	1.63	1.62	1.60	1.58	1.55	1.52	1.49	1.45	1.41
2.30	1.76	1.77	1.77	1.77	1.76	1.75	1.74	1.71	1.69	1.66	1.62	1.59	1.55	1.50
2.20	1.88	1.89	1.90	1.89	1.89	1.88	1.86	1.84	1.81	1.77	1.73	1.69	1.65	1.60
2.10	2.01	2.03	2.03	2.03	2.02	2.01	1.99	1.96	1.92	1.89	1.86	1.81	1.76	1.70
2.00	2.16	2.18	2.18	2.18	2.17	2.15	2.13	2.10	2.06	2.02	1.97	1.92	1.87	1.82
1.90	2.32	2.33	2.34	2.34	2.33	2.31	2.27	2.24	2.20	2.15	2.10	2.04	1.98	1.92
1.80	2.46	2.48	2.49	2.48	2.47	2.45	2.43	2.40	2.35	2.29	2.23	2.17	2.11	2.04
1.70	2.63	2.65	2.66	2.66	2.64	2.62	2.59	2.55	2.50	2.45	2.38	2.31	2.24	2.16
1.60	2.81	2.83	2.84	2.84	2.82	2.80	2.76	2.72	2.67	2.60	2.53	2.46	2.38	2.29
1.50	3.00	3.02	3.03	3.02	3.01	2.98	2.94	2.89	2.83	2.77	2.69	2.60	2.51	2.42
1.40	3.19	3.20	3.21	3.21	3.20	3.17	3.12	3.06	3.00	2.93	2.85	2.76	2.66	2.55
1.30	3.38	3.40	3.41	3.41	3.39	3.36	3.30	3.24	3.17	3.09	3.00	2.91	2.80	2.70
1.20	3.55	3.57	3.58	3.57	3.56	3.52	3.47	3.42	3.34	3.25	3.15	3.05	2.94	2.83
1.10	3.74	3.76	3.77	3.77	3.74	3.70	3.64	3.58	3.50	3.42	3.31	3.20	3.08	2.97
1.00	3.93	3.96	3.97	3.96	3.94	3.91	3.84	3.76	3.66	3.57	3.46	3.35	3.23	3.09
0.90	4.13	4.17	4.19	4.18	4.15	4.11	4.05	3.96	3.85	3.73	3.61	3.50	3.36	3.22
0.80	4.34	4.38	4.39	4.38	4.35	4.31	4.24	4.14	4.03	3.90	3.77	3.64	3.50	3.34
0.70	4.53	4.56	4.57	4.57	4.54	4.48	4.40	4.31	4.19	4.07	3.92	3.76	3.61	3.45
0.60	4.70	4.73	4.75	4.74	4.70	4.65	4.56	4.45	4.34	4.21	4.06	3.89	3.72	3.56
0.50	4.82	4.88	4.91	4.90	4.85	4.79	4.70	4.59	4.48	4.32	4.17	4.00	3.82	3.64
0.40	4.96	5.01	5.03	5.01	4.96	4.90	4.81	4.70	4.57	4.42	4.26	4.08	3.90	3.71

Measured by Checked by Approved by SALED AUSTRALIA

TEST RESULT

Name :	SALED AUSTRALIA
File :	SA 3LED SPECTRUM(2835)12V 90mA. IES
Report :	
Catalog :	
LampType :	Point
No. of lamps :	1
Lamp flux :	96.87 lm
Date :	2018-09-11
Comments :	

Illuminance Grid [4/15]

Y/X	1.20	1.30	1.40	1.50	1.60	1.70	1.80	1.90	2.00	2.10	2.20	2.30	2.40	2.50
3.00	0.91	0.88	0.85	0.83	0.80	0.77	0.74	0.71	0.67	0.64	0.60	0.56	0.53	0.49
2.90	0.98	0.95	0.92	0.89	0.85	0.82	0.79	0.76	0.73	0.69	0.65	0.61	0.57	0.54
2.80	1.05	1.02	0.98	0.95	0.92	0.88	0.84	0.81	0.77	0.74	0.70	0.66	0.62	0.58
2.70	1.12	1.09	1.05	1.01	0.98	0.94	0.90	0.86	0.82	0.78	0.75	0.71	0.67	0.62
2.60	1.21	1.17	1.13	1.08	1.04	1.00	0.96	0.92	0.87	0.83	0.79	0.75	0.71	0.67
2.50	1.28	1.24	1.21	1.16	1.11	1.06	1.02	0.97	0.93	0.88	0.84	0.79	0.75	0.71
2.40	1.36	1.32	1.28	1.24	1.19	1.14	1.08	1.03	0.99	0.94	0.89	0.84	0.79	0.75
2.30	1.46	1.41	1.36	1.31	1.26	1.21	1.16	1.10	1.04	0.99	0.94	0.89	0.84	0.79
2.20	1.55	1.50	1.44	1.39	1.33	1.28	1.23	1.17	1.10	1.05	1.00	0.94	0.89	0.83
2.10	1.65	1.59	1.53	1.47	1.41	1.35	1.29	1.23	1.18	1.10	1.04	0.99	0.93	0.88
2.00	1.75	1.69	1.63	1.56	1.50	1.43	1.36	1.30	1.24	1.17	1.10	1.04	0.98	0.92
1.90	1.86	1.80	1.72	1.65	1.58	1.51	1.44	1.38	1.30	1.23	1.16	1.09	1.03	0.97
1.80	1.96	1.89	1.83	1.74	1.67	1.59	1.52	1.44	1.37	1.30	1.22	1.15	1.07	1.01
1.70	2.08	2.00	1.92	1.85	1.76	1.68	1.59	1.51	1.44	1.36	1.28	1.21	1.13	1.05
1.60	2.20	2.11	2.02	1.93	1.86	1.76	1.67	1.59	1.50	1.42	1.34	1.26	1.18	1.10
1.50	2.32	2.23	2.13	2.04	1.94	1.85	1.75	1.66	1.57	1.48	1.40	1.32	1.23	1.15
1.40	2.45	2.34	2.25	2.14	2.04	1.93	1.84	1.73	1.64	1.54	1.45	1.37	1.28	1.20
1.30	2.58	2.47	2.36	2.24	2.13	2.02	1.91	1.81	1.70	1.60	1.51	1.42	1.33	1.24
1.20	2.72	2.59	2.46	2.34	2.22	2.11	1.99	1.88	1.77	1.66	1.56	1.46	1.37	1.28
1.10	2.83	2.71	2.57	2.44	2.31	2.19	2.07	1.95	1.83	1.72	1.61	1.51	1.42	1.32
1.00	2.96	2.81	2.68	2.53	2.39	2.27	2.14	2.01	1.89	1.77	1.66	1.55	1.45	1.36
0.90	3.07	2.93	2.78	2.62	2.48	2.34	2.21	2.08	1.95	1.83	1.71	1.60	1.49	1.39
0.80	3.18	3.02	2.86	2.71	2.56	2.41	2.27	2.13	2.00	1.87	1.75	1.64	1.53	1.42
0.70	3.29	3.11	2.96	2.79	2.63	2.47	2.33	2.19	2.05	1.92	1.79	1.67	1.56	1.45
0.60	3.38	3.20	3.03	2.85	2.69	2.53	2.37	2.23	2.09	1.96	1.83	1.70	1.58	1.47
0.50	3.46	3.28	3.09	2.92	2.75	2.58	2.42	2.27	2.12	1.98	1.85	1.72	1.60	1.50
0.40	3.53	3.34	3.15	2.96	2.78	2.61	2.45	2.30	2.16	2.01	1.87	1.75	1.62	1.51

TEST RESULT

Name :	SALED AUSTRALIA
File :	SA 3LED SPECTRUM(2835)12V 90mA. IES
Report :	
Catalog :	
LampType :	Point
No. of lamps :	1
Lamp flux :	96.87 lm
Date :	2018-09-11
Comments :	

Illuminance Grid [5/15]

Y/X	2.60	2.70	2.80	2.90	3.00
3.00	0.46	0.42	0.39	0.36	0.35
2.90	0.50	0.46	0.43	0.41	0.38
2.80	0.54	0.50	0.47	0.44	0.41
2.70	0.58	0.55	0.51	0.47	0.44
2.60	0.62	0.58	0.55	0.51	0.47
2.50	0.67	0.62	0.58	0.54	0.50
2.40	0.71	0.66	0.62	0.57	0.53
2.30	0.74	0.70	0.65	0.61	0.56
2.20	0.78	0.73	0.69	0.64	0.59
2.10	0.82	0.77	0.72	0.67	0.63
2.00	0.87	0.81	0.76	0.71	0.66
1.90	0.91	0.85	0.79	0.74	0.69
1.80	0.95	0.89	0.83	0.77	0.71
1.70	0.99	0.93	0.86	0.80	0.74
1.60	1.03	0.97	0.90	0.83	0.77
1.50	1.07	1.00	0.93	0.87	0.80
1.40	1.11	1.03	0.97	0.90	0.83
1.30	1.15	1.07	1.00	0.93	0.86
1.20	1.19	1.10	1.03	0.96	0.88
1.10	1.23	1.14	1.05	0.99	0.91
1.00	1.27	1.17	1.08	1.01	0.93
0.90	1.30	1.20	1.11	1.03	0.96
0.80	1.33	1.23	1.14	1.05	0.97
0.70	1.35	1.25	1.16	1.07	0.99
0.60	1.37	1.27	1.17	1.08	1.00
0.50	1.38	1.29	1.19	1.10	1.01
0.40	1.40	1.30	1.21	1.11	1.03

TEST RESULT

Name :	SALED AUSTRALIA
File :	SA 3LED SPECTRUM(2835)12V 90mA. IES
Report :	
Catalog :	
LampType :	Point
No. of lamps :	1
Lamp flux :	96.87 lm
Date :	2018-09-11
Comments :	

Illuminance Grid [6/15]

Y/X	-3.00	-2.90	-2.80	-2.70	-2.60	-2.50	-2.40	-2.30	-2.20	-2.10	-2.00	-1.90	-1.80	-1.70
0.30	1.07	1.14	1.23	1.33	1.42	1.54	1.64	1.76	1.88	2.02	2.17	2.32	2.48	2.65
0.20	1.07	1.15	1.24	1.34	1.43	1.55	1.65	1.77	1.90	2.04	2.19	2.34	2.51	2.67
0.10	1.08	1.16	1.25	1.35	1.44	1.56	1.66	1.78	1.91	2.05	2.21	2.36	2.52	2.69
0.00	1.08	1.16	1.25	1.35	1.44	1.56	1.66	1.78	1.92	2.06	2.21	2.36	2.53	2.69
-0.10	1.08	1.16	1.25	1.35	1.44	1.56	1.66	1.78	1.92	2.06	2.21	2.36	2.52	2.69
-0.20	1.08	1.15	1.24	1.34	1.43	1.55	1.65	1.77	1.91	2.04	2.20	2.35	2.51	2.67
-0.30	1.07	1.15	1.23	1.33	1.42	1.54	1.64	1.76	1.89	2.03	2.18	2.33	2.48	2.64
-0.40	1.06	1.14	1.22	1.32	1.41	1.53	1.62	1.74	1.87	2.00	2.15	2.30	2.45	2.61
-0.50	1.05	1.12	1.21	1.30	1.39	1.50	1.60	1.72	1.84	1.98	2.11	2.27	2.40	2.56
-0.60	1.03	1.11	1.19	1.28	1.38	1.47	1.58	1.69	1.80	1.93	2.06	2.20	2.35	2.51
-0.70	1.01	1.09	1.17	1.26	1.34	1.43	1.54	1.65	1.76	1.89	2.02	2.15	2.29	2.44
-0.80	0.99	1.06	1.14	1.22	1.31	1.40	1.51	1.61	1.72	1.84	1.97	2.09	2.23	2.37
-0.90	0.96	1.04	1.11	1.19	1.28	1.37	1.47	1.57	1.68	1.79	1.91	2.03	2.16	2.30
-1.00	0.93	1.01	1.09	1.16	1.25	1.33	1.43	1.53	1.63	1.73	1.86	1.97	2.09	2.22
-1.10	0.91	0.98	1.06	1.13	1.21	1.29	1.38	1.48	1.58	1.68	1.79	1.91	2.02	2.14
-1.20	0.88	0.95	1.03	1.10	1.17	1.26	1.34	1.43	1.52	1.63	1.72	1.84	1.95	2.06
-1.30	0.85	0.92	0.99	1.06	1.13	1.21	1.29	1.38	1.47	1.57	1.66	1.76	1.87	1.97
-1.40	0.83	0.89	0.96	1.03	1.10	1.17	1.25	1.32	1.41	1.50	1.60	1.69	1.79	1.89
-1.50	0.80	0.85	0.92	0.99	1.06	1.13	1.20	1.27	1.35	1.44	1.53	1.62	1.71	1.81
-1.60	0.77	0.82	0.88	0.95	1.02	1.08	1.15	1.22	1.30	1.38	1.46	1.54	1.63	1.71
-1.70	0.73	0.79	0.85	0.90	0.97	1.04	1.10	1.17	1.24	1.31	1.39	1.47	1.55	1.64
-1.80	0.70	0.76	0.81	0.86	0.93	0.99	1.05	1.12	1.19	1.25	1.32	1.40	1.47	1.55
-1.90	0.67	0.72	0.77	0.83	0.88	0.94	1.01	1.07	1.13	1.19	1.26	1.32	1.40	1.47
-2.00	0.64	0.68	0.74	0.79	0.84	0.89	0.96	1.01	1.07	1.14	1.20	1.26	1.32	1.39
-2.10	0.61	0.65	0.70	0.75	0.80	0.85	0.90	0.96	1.02	1.07	1.14	1.19	1.25	1.31
-2.20	0.58	0.62	0.66	0.71	0.76	0.81	0.85	0.91	0.96	1.01	1.07	1.14	1.18	1.23
-2.30	0.55	0.59	0.63	0.67	0.71	0.76	0.81	0.86	0.91	0.96	1.01	1.06	1.12	1.18
-2.40	0.51	0.55	0.59	0.63	0.67	0.72	0.76	0.81	0.86	0.90	0.95	1.00	1.04	1.10

Measured by Checked by Approved by SALED AUSTRALIA

TEST RESULT

Name :	SALED AUSTRALIA
File :	SA 3LED SPECTRUM(2835)12V 90mA. IES
Report :	
Catalog :	
LampType :	Point
No. of lamps :	1
Lamp flux :	96.87 lm
Date :	2018-09-11
Comments :	

Illuminance Grid [7/15]

Y/X	-1.60	-1.50	-1.40	-1.30	-1.20	-1.10	-1.00	-0.90	-0.80	-0.70	-0.60	-0.50	-0.40	-0.30
0.30	2.82	2.99	3.19	3.38	3.58	3.76	3.94	4.12	4.30	4.44	4.62	4.75	4.86	4.97
0.20	2.85	3.03	3.23	3.43	3.64	3.82	4.00	4.19	4.38	4.49	4.66	4.81	4.93	5.08
0.10	2.87	3.05	3.25	3.46	3.67	3.85	4.03	4.23	4.41	4.57	4.73	4.88	5.00	5.09
0.00	2.88	3.06	3.26	3.47	3.69	3.86	4.04	4.25	4.42	4.59	4.75	4.90	5.02	5.13
-0.10	2.87	3.05	3.25	3.46	3.68	3.85	4.04	4.23	4.41	4.58	4.74	4.89	5.02	5.11
-0.20	2.85	3.03	3.23	3.43	3.65	3.82	4.01	4.19	4.37	4.52	4.68	4.82	4.97	5.06
-0.30	2.82	3.00	3.19	3.39	3.59	3.76	3.95	4.13	4.30	4.48	4.60	4.75	4.88	4.99
-0.40	2.78	2.96	3.13	3.31	3.50	3.69	3.89	4.06	4.22	4.38	4.51	4.65	4.78	4.88
-0.50	2.71	2.89	3.06	3.24	3.43	3.62	3.80	3.96	4.12	4.26	4.43	4.53	4.65	4.76
-0.60	2.65	2.83	2.99	3.16	3.34	3.51	3.68	3.86	4.02	4.14	4.28	4.41	4.50	4.60
-0.70	2.59	2.74	2.91	3.07	3.24	3.40	3.58	3.72	3.87	4.02	4.13	4.25	4.36	4.42
-0.80	2.52	2.66	2.82	2.98	3.13	3.29	3.44	3.60	3.73	3.85	3.98	4.08	4.16	4.25
-0.90	2.44	2.58	2.72	2.87	3.02	3.17	3.31	3.45	3.57	3.69	3.80	3.90	3.99	4.06
-1.00	2.35	2.49	2.62	2.76	2.90	3.04	3.17	3.30	3.42	3.53	3.64	3.72	3.79	3.86
-1.10	2.26	2.39	2.52	2.64	2.78	2.91	3.03	3.15	3.26	3.37	3.47	3.54	3.62	3.68
-1.20	2.17	2.29	2.42	2.53	2.65	2.78	2.91	3.00	3.11	3.21	3.29	3.37	3.44	3.50
-1.30	2.08	2.19	2.30	2.42	2.53	2.65	2.75	2.87	2.96	3.04	3.13	3.20	3.26	3.31
-1.40	1.99	2.09	2.19	2.30	2.40	2.50	2.61	2.71	2.79	2.89	2.95	3.02	3.08	3.12
-1.50	1.90	1.99	2.09	2.18	2.28	2.37	2.46	2.55	2.64	2.72	2.78	2.85	2.89	2.93
-1.60	1.81	1.89	1.98	2.07	2.16	2.24	2.32	2.40	2.48	2.55	2.62	2.67	2.70	2.73
-1.70	1.71	1.80	1.88	1.96	2.04	2.12	2.19	2.26	2.33	2.39	2.45	2.50	2.54	2.57
-1.80	1.63	1.70	1.78	1.85	1.92	2.00	2.07	2.13	2.19	2.25	2.30	2.34	2.38	2.41
-1.90	1.54	1.61	1.68	1.75	1.82	1.88	1.95	2.01	2.06	2.11	2.16	2.19	2.23	2.25
-2.00	1.45	1.52	1.59	1.65	1.71	1.77	1.83	1.88	1.93	1.98	2.02	2.05	2.08	2.11
-2.10	1.37	1.43	1.49	1.56	1.61	1.66	1.72	1.77	1.81	1.85	1.89	1.93	1.96	1.98
-2.20	1.29	1.35	1.40	1.46	1.51	1.57	1.61	1.66	1.70	1.74	1.77	1.80	1.83	1.85
-2.30	1.22	1.27	1.32	1.37	1.42	1.46	1.51	1.55	1.59	1.62	1.65	1.68	1.70	1.72
-2.40	1.15	1.19	1.23	1.28	1.33	1.37	1.41	1.45	1.48	1.52	1.54	1.57	1.59	1.60

Measured by Checked by Approved by SALED AUSTRALIA

TEST RESULT

Name :	SALED AUSTRALIA
File :	SA 3LED SPECTRUM(2835)12V 90mA. IES
Report :	
Catalog :	
LampType :	Point
No. of lamps :	1
Lamp flux :	96.87 lm
Date :	2018-09-11
Comments :	

Illuminance Grid [8/15]

Y/X	-0.20	-0.10	0.00	0.10	0.20	0.30	0.40	0.50	0.60	0.70	0.80	0.90	1.00	1.10
0.30	5.04	5.08	5.11	5.10	5.05	5.00	4.90	4.78	4.64	4.51	4.33	4.15	3.96	3.77
0.20	5.13	5.15	5.17	5.16	5.12	5.08	4.97	4.86	4.71	4.54	4.37	4.18	3.99	3.81
0.10	5.19	5.20	5.22	5.22	5.20	5.11	5.03	4.89	4.74	4.57	4.40	4.21	4.01	3.83
0.00	5.21	5.26	5.25	5.26	5.21	5.16	5.03	4.90	4.75	4.57	4.40	4.21	4.00	3.84
-0.10	5.19	5.23	5.25	5.24	5.19	5.15	5.04	4.91	4.74	4.57	4.39	4.20	4.00	3.83
-0.20	5.14	5.19	5.21	5.20	5.17	5.09	5.00	4.88	4.71	4.55	4.36	4.16	3.98	3.80
-0.30	5.05	5.11	5.12	5.11	5.09	5.02	4.91	4.79	4.65	4.50	4.32	4.12	3.95	3.75
-0.40	4.96	5.00	5.02	5.01	4.97	4.90	4.84	4.70	4.56	4.39	4.24	4.07	3.88	3.69
-0.50	4.82	4.87	4.89	4.87	4.84	4.81	4.67	4.57	4.45	4.30	4.12	3.97	3.79	3.63
-0.60	4.66	4.69	4.71	4.70	4.66	4.62	4.52	4.42	4.30	4.15	4.03	3.86	3.69	3.52
-0.70	4.48	4.52	4.54	4.53	4.49	4.43	4.37	4.26	4.13	4.02	3.89	3.73	3.59	3.42
-0.80	4.29	4.32	4.33	4.32	4.30	4.25	4.17	4.08	3.98	3.86	3.73	3.62	3.46	3.31
-0.90	4.11	4.14	4.14	4.14	4.11	4.06	3.99	3.89	3.83	3.70	3.58	3.46	3.33	3.19
-1.00	3.92	3.94	3.95	3.94	3.92	3.86	3.82	3.75	3.64	3.54	3.44	3.31	3.19	3.05
-1.10	3.72	3.75	3.76	3.75	3.73	3.69	3.62	3.55	3.48	3.39	3.26	3.18	3.03	2.92
-1.20	3.54	3.56	3.57	3.56	3.54	3.50	3.45	3.39	3.30	3.20	3.13	3.00	2.91	2.79
-1.30	3.35	3.37	3.38	3.37	3.35	3.31	3.25	3.19	3.14	3.04	2.95	2.87	2.77	2.65
-1.40	3.15	3.18	3.18	3.18	3.16	3.13	3.09	3.01	2.95	2.89	2.81	2.72	2.61	2.51
-1.50	2.96	2.98	2.98	2.98	2.96	2.93	2.89	2.85	2.80	2.72	2.64	2.55	2.47	2.38
-1.60	2.76	2.78	2.78	2.78	2.76	2.74	2.70	2.67	2.62	2.55	2.49	2.42	2.34	2.26
-1.70	2.59	2.60	2.61	2.60	2.59	2.57	2.54	2.50	2.46	2.41	2.34	2.28	2.21	2.13
-1.80	2.43	2.45	2.45	2.45	2.44	2.42	2.39	2.35	2.31	2.26	2.21	2.15	2.08	2.01
-1.90	2.27	2.28	2.29	2.28	2.27	2.26	2.23	2.20	2.17	2.12	2.07	2.02	1.95	1.89
-2.00	2.12	2.13	2.14	2.14	2.13	2.11	2.09	2.06	2.03	1.99	1.94	1.89	1.84	1.78
-2.10	1.99	2.00	2.01	2.01	2.00	1.98	1.96	1.93	1.90	1.86	1.82	1.77	1.73	1.68
-2.20	1.86	1.87	1.87	1.87	1.86	1.85	1.83	1.80	1.78	1.75	1.71	1.67	1.61	1.56
-2.30	1.73	1.74	1.75	1.74	1.73	1.72	1.71	1.68	1.66	1.62	1.59	1.55	1.52	1.48
-2.40	1.61	1.62	1.62	1.62	1.61	1.60	1.59	1.57	1.54	1.52	1.49	1.46	1.42	1.37

Measured by Checked by Approved by SALED AUSTRALIA

TEST RESULT

Name :	SALED AUSTRALIA
File :	SA 3LED SPECTRUM(2835)12V 90mA. IES
Report :	
Catalog :	
LampType :	Point
No. of lamps :	1
Lamp flux :	96.87 lm
Date :	2018-09-11
Comments :	

Illuminance Grid [9/15]

Y/X	1.20	1.30	1.40	1.50	1.60	1.70	1.80	1.90	2.00	2.10	2.20	2.30	2.40	2.50
0.30	3.56	3.38	3.18	3.00	2.82	2.64	2.48	2.32	2.18	2.03	1.89	1.76	1.64	1.53
0.20	3.60	3.41	3.21	3.02	2.84	2.66	2.50	2.33	2.19	2.04	1.91	1.77	1.65	1.54
0.10	3.61	3.43	3.22	3.04	2.85	2.67	2.51	2.34	2.20	2.05	1.91	1.78	1.65	1.54
0.00	3.62	3.43	3.23	3.04	2.86	2.67	2.51	2.34	2.20	2.05	1.92	1.78	1.65	1.54
-0.10	3.61	3.42	3.22	3.03	2.85	2.67	2.51	2.34	2.20	2.05	1.91	1.78	1.65	1.54
-0.20	3.59	3.40	3.20	3.01	2.83	2.65	2.49	2.33	2.19	2.04	1.90	1.77	1.64	1.53
-0.30	3.55	3.36	3.17	2.98	2.80	2.62	2.47	2.31	2.17	2.02	1.88	1.76	1.63	1.52
-0.40	3.50	3.32	3.13	2.93	2.76	2.59	2.44	2.29	2.14	1.99	1.86	1.74	1.61	1.51
-0.50	3.43	3.26	3.07	2.88	2.72	2.55	2.41	2.26	2.10	1.96	1.84	1.71	1.59	1.49
-0.60	3.35	3.18	2.99	2.81	2.67	2.51	2.36	2.22	2.06	1.93	1.81	1.68	1.57	1.46
-0.70	3.26	3.08	2.91	2.75	2.59	2.46	2.32	2.15	2.02	1.89	1.77	1.65	1.55	1.43
-0.80	3.16	2.98	2.81	2.68	2.53	2.39	2.26	2.09	1.96	1.85	1.73	1.62	1.52	1.40
-0.90	3.03	2.87	2.74	2.59	2.46	2.32	2.17	2.04	1.91	1.80	1.69	1.58	1.47	1.37
-1.00	2.91	2.76	2.63	2.51	2.38	2.25	2.09	1.97	1.86	1.75	1.64	1.54	1.43	1.34
-1.10	2.78	2.67	2.53	2.41	2.30	2.14	2.03	1.90	1.80	1.69	1.59	1.50	1.39	1.30
-1.20	2.67	2.54	2.44	2.32	2.18	2.06	1.94	1.85	1.74	1.63	1.55	1.44	1.35	1.26
-1.30	2.53	2.43	2.33	2.22	2.08	1.98	1.87	1.78	1.67	1.58	1.49	1.39	1.31	1.22
-1.40	2.42	2.32	2.22	2.09	2.00	1.89	1.80	1.70	1.61	1.52	1.42	1.34	1.26	1.17
-1.50	2.30	2.20	2.10	2.00	1.90	1.82	1.72	1.63	1.55	1.45	1.37	1.29	1.21	1.13
-1.60	2.17	2.08	1.99	1.90	1.82	1.73	1.64	1.57	1.48	1.39	1.31	1.23	1.16	1.08
-1.70	2.05	1.97	1.88	1.81	1.73	1.64	1.57	1.49	1.40	1.33	1.25	1.18	1.10	1.03
-1.80	1.93	1.86	1.79	1.72	1.63	1.56	1.49	1.41	1.34	1.27	1.20	1.12	1.05	0.99
-1.90	1.82	1.76	1.70	1.61	1.55	1.48	1.40	1.34	1.27	1.20	1.14	1.06	1.01	0.95
-2.00	1.73	1.66	1.59	1.54	1.47	1.40	1.33	1.27	1.21	1.14	1.07	1.01	0.96	0.89
-2.10	1.61	1.56	1.51	1.44	1.38	1.32	1.26	1.20	1.14	1.08	1.02	0.97	0.90	0.85
-2.20	1.52	1.47	1.41	1.35	1.30	1.25	1.19	1.13	1.07	1.02	0.96	0.91	0.85	0.81
-2.30	1.42	1.37	1.32	1.27	1.23	1.17	1.12	1.06	1.01	0.96	0.90	0.85	0.81	0.76
-2.40	1.33	1.29	1.25	1.20	1.15	1.10	1.05	1.00	0.95	0.90	0.85	0.81	0.76	0.72

Measured by Checked by Approved by SALED AUSTRALIA

TEST RESULT

Name :	SALED AUSTRALIA
File :	SA 3LED SPECTRUM(2835)12V 90mA. IES
Report :	
Catalog :	
LampType :	Point
No. of lamps :	1
Lamp flux :	96.87 lm
Date :	2018-09-11
Comments :	

Illuminance Grid [10/15]

Y/X	2.60	2.70	2.80	2.90	3.00
0.30	1.41	1.31	1.22	1.12	1.03
0.20	1.42	1.31	1.22	1.12	1.04
0.10	1.42	1.31	1.23	1.12	1.04
0.00	1.42	1.31	1.23	1.12	1.04
-0.10	1.42	1.31	1.22	1.12	1.04
-0.20	1.41	1.31	1.22	1.12	1.04
-0.30	1.40	1.30	1.21	1.11	1.03
-0.40	1.39	1.29	1.20	1.10	1.02
-0.50	1.37	1.28	1.19	1.09	1.01
-0.60	1.35	1.26	1.16	1.08	1.00
-0.70	1.34	1.24	1.14	1.06	0.98
-0.80	1.31	1.22	1.13	1.04	0.96
-0.90	1.28	1.19	1.10	1.02	0.95
-1.00	1.25	1.16	1.07	1.00	0.92
-1.10	1.21	1.13	1.04	0.97	0.89
-1.20	1.17	1.09	1.01	0.95	0.87
-1.30	1.13	1.05	0.99	0.91	0.84
-1.40	1.09	1.02	0.95	0.88	0.82
-1.50	1.05	0.99	0.91	0.85	0.79
-1.60	1.01	0.95	0.87	0.82	0.76
-1.70	0.97	0.90	0.84	0.78	0.72
-1.80	0.93	0.86	0.81	0.75	0.69
-1.90	0.88	0.83	0.77	0.71	0.67
-2.00	0.84	0.79	0.73	0.68	0.63
-2.10	0.80	0.75	0.70	0.65	0.60
-2.20	0.76	0.71	0.66	0.61	0.57
-2.30	0.71	0.67	0.62	0.58	0.54
-2.40	0.67	0.63	0.59	0.54	0.51

Measured by Checked by Approved by SALED AUSTRALIA

TEST RESULT

Name :	SALED AUSTRALIA
File :	SA 3LED SPECTRUM(2835)12V 90mA. IES
Report :	
Catalog :	
LampType :	Point
No. of lamps :	1
Lamp flux :	96.87 lm
Date :	2018-09-11
Comments :	

Illuminance Grid [11/15]

Y/X	-3.00	-2.90	-2.80	-2.70	-2.60	-2.50	-2.40	-2.30	-2.20	-2.10	-2.00	-1.90	-1.80	-1.70
-2.50	0.48	0.52	0.56	0.60	0.63	0.67	0.72	0.76	0.81	0.85	0.89	0.94	0.98	1.02
-2.60	0.45	0.49	0.52	0.56	0.60	0.63	0.67	0.71	0.75	0.80	0.84	0.88	0.92	0.96
-2.70	0.42	0.45	0.49	0.52	0.56	0.60	0.63	0.67	0.70	0.74	0.79	0.83	0.86	0.90
-2.80	0.40	0.42	0.45	0.49	0.52	0.56	0.59	0.62	0.66	0.69	0.73	0.77	0.81	0.84
-2.90	0.37	0.40	0.43	0.46	0.49	0.52	0.55	0.58	0.61	0.65	0.68	0.71	0.74	0.78
-3.00	0.34	0.38	0.40	0.43	0.45	0.48	0.51	0.54	0.57	0.60	0.63	0.66	0.69	0.72

TEST RESULT

Name :	SALED AUSTRALIA
File :	SA 3LED SPECTRUM(2835)12V 90mA. IES
Report :	
Catalog :	
LampType :	Point
No. of lamps :	1
Lamp flux :	96.87 lm
Date :	2018-09-11
Comments :	

Illuminance Grid [12/15]

Y/X	-1.60	-1.50	-1.40	-1.30	-1.20	-1.10	-1.00	-0.90	-0.80	-0.70	-0.60	-0.50	-0.40	-0.30
-2.50	1.07	1.13	1.17	1.20	1.24	1.28	1.32	1.35	1.38	1.41	1.44	1.46	1.48	1.49
-2.60	1.00	1.04	1.09	1.13	1.17	1.19	1.23	1.26	1.29	1.32	1.34	1.36	1.38	1.39
-2.70	0.94	0.97	1.01	1.04	1.08	1.12	1.15	1.18	1.20	1.22	1.24	1.26	1.28	1.29
-2.80	0.88	0.91	0.94	0.97	1.00	1.03	1.06	1.10	1.12	1.14	1.16	1.17	1.18	1.19
-2.90	0.82	0.85	0.88	0.91	0.93	0.96	0.99	1.01	1.03	1.06	1.07	1.09	1.10	1.11
-3.00	0.75	0.79	0.82	0.84	0.87	0.89	0.92	0.94	0.96	0.97	0.99	1.01	1.02	1.03

TEST RESULT

Name :	SALED AUSTRALIA
File :	SA 3LED SPECTRUM(2835)12V 90mA. IES
Report :	
Catalog :	
LampType :	Point
No. of lamps :	1
Lamp flux :	96.87 lm
Date :	2018-09-11
Comments :	

Illuminance Grid [13/15]

Y/X	-0.20	-0.10	0.00	0.10	0.20	0.30	0.40	0.50	0.60	0.70	0.80	0.90	1.00	1.10
-2.50	1.50	1.51	1.51	1.51	1.51	1.50	1.48	1.47	1.45	1.42	1.39	1.35	1.32	1.28
-2.60	1.40	1.41	1.41	1.41	1.41	1.40	1.38	1.36	1.34	1.31	1.29	1.27	1.24	1.20
-2.70	1.30	1.30	1.30	1.30	1.30	1.29	1.28	1.26	1.25	1.23	1.21	1.18	1.15	1.12
-2.80	1.20	1.21	1.21	1.21	1.20	1.20	1.19	1.17	1.15	1.14	1.12	1.09	1.07	1.04
-2.90	1.12	1.12	1.12	1.12	1.12	1.11	1.10	1.09	1.08	1.06	1.04	1.02	0.99	0.96
-3.00	1.04	1.04	1.04	1.04	1.04	1.03	1.02	1.01	0.99	0.98	0.96	0.94	0.92	0.89

TEST RESULT

Name :	SALED AUSTRALIA
File :	SA 3LED SPECTRUM(2835)12V 90mA. IES
Report :	
Catalog :	
LampType :	Point
No. of lamps :	1
Lamp flux :	96.87 lm
Date :	2018-09-11
Comments :	

Illuminance Grid [14/15]

Y/X	1.20	1.30	1.40	1.50	1.60	1.70	1.80	1.90	2.00	2.10	2.20	2.30	2.40	2.50
-2.50	1.25	1.21	1.16	1.12	1.08	1.03	0.98	0.94	0.89	0.85	0.81	0.76	0.72	0.67
-2.60	1.16	1.12	1.09	1.05	1.00	0.96	0.92	0.88	0.84	0.80	0.76	0.71	0.67	0.63
-2.70	1.09	1.05	1.01	0.97	0.93	0.90	0.86	0.82	0.78	0.75	0.71	0.66	0.62	0.59
-2.80	1.01	0.97	0.94	0.91	0.87	0.84	0.80	0.77	0.73	0.69	0.65	0.62	0.58	0.55
-2.90	0.93	0.90	0.87	0.84	0.81	0.78	0.75	0.72	0.68	0.64	0.61	0.58	0.55	0.51
-3.00	0.87	0.84	0.81	0.79	0.76	0.73	0.69	0.66	0.63	0.60	0.57	0.54	0.51	0.48

TEST RESULT

Name :	SALED AUSTRALIA
File :	SA 3LED SPECTRUM(2835)12V 90mA. IES
Report :	
Catalog :	
LampType :	Point
No. of lamps :	1
Lamp flux :	96.87 lm
Date :	2018-09-11
Comments :	

Illuminance Grid [15/15]

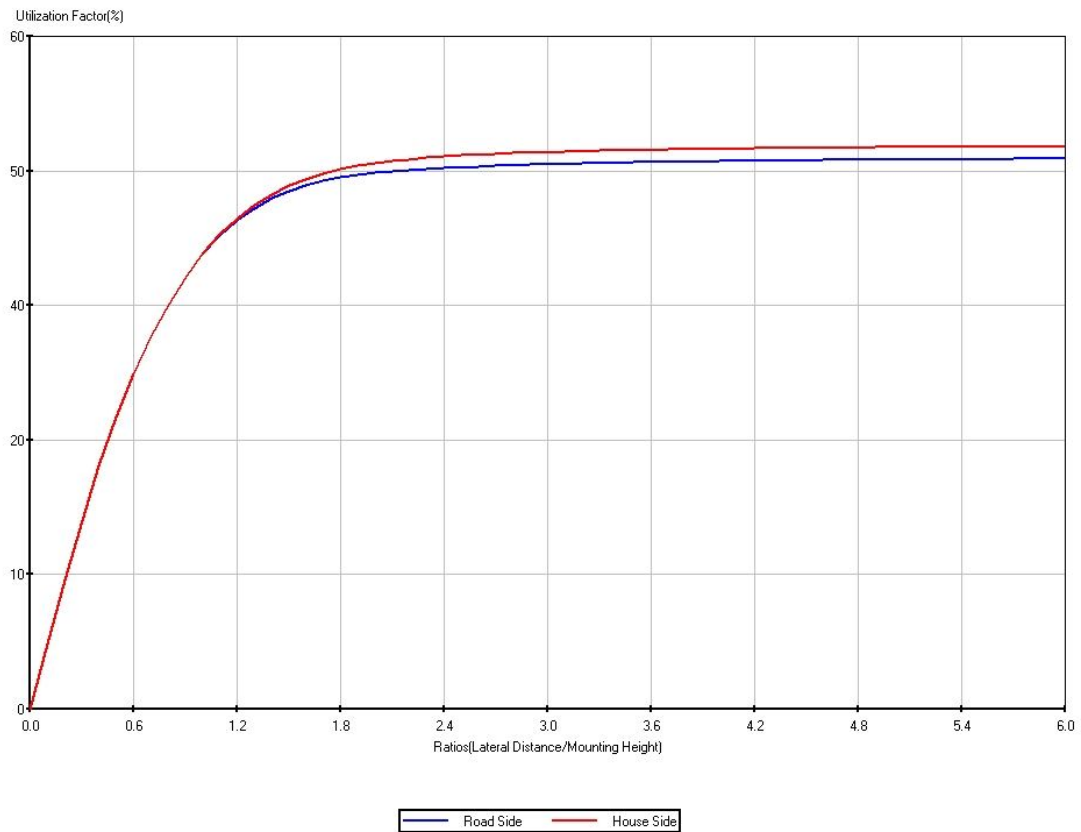
Y/X	2.60	2.70	2.80	2.90	3.00
-2.50	0.63	0.59	0.55	0.51	0.48
-2.60	0.59	0.55	0.52	0.48	0.45
-2.70	0.55	0.52	0.48	0.45	0.42
-2.80	0.52	0.48	0.45	0.42	0.39
-2.90	0.48	0.45	0.42	0.39	0.36
-3.00	0.45	0.42	0.39	0.36	0.34

All values in Lux, based on Luminaire Height of 2.7m
 Table Values : Average=1.97, Max.=5.26, Min=0.34
 Uniformity(minimum/average) =0.17

TEST RESULT

Name :	SALED AUSTRALIA
File :	SA 3LED SPECTRUM(2835)12V 90mA. IES
Report :	
Catalog :	
LampType :	Point
No. of lamps :	1
Lamp flux :	96.87 lm
Date :	2018-09-11
Comments :	

UF Diagram



TEST RESULT

Name :	SALED AUSTRALIA
File :	SA 3LED SPECTRUM(2835)12V 90mA. IES
Report :	
Catalog :	
LampType :	Point
No. of lamps :	1
Lamp flux :	96.87 lm
Date :	2018-09-11
Comments :	

UF Table [1/2]

Ratios(Distance/Mount Height)	Utilization Factor (Road Side)	Utilization Factor (House Side)
0.000	0.000	0.000
0.100	5.835	5.848
0.200	11.483	11.501
0.300	16.795	16.823
0.400	21.659	21.698
0.500	26.029	26.072
0.600	29.873	29.909
0.700	33.201	33.226
0.800	36.053	36.068
0.900	38.493	38.511
1.000	40.539	40.573
1.100	42.221	42.304
1.200	43.586	43.745
1.300	44.672	44.928
1.400	45.524	45.890
1.500	46.187	46.664
1.600	46.698	47.281
1.700	47.091	47.768
1.800	47.392	48.152
1.900	47.624	48.454
2.000	47.804	48.693
2.100	47.948	48.883
2.200	48.066	49.040
2.300	48.164	49.169
2.400	48.248	49.276
2.500	48.320	49.366
2.600	48.384	49.443
2.700	48.442	49.510
2.800	48.493	49.569
2.900	48.540	49.622
3.000	48.582	49.668
3.100	48.621	49.710
3.200	48.657	49.748
3.300	48.689	49.783

TEST RESULT

Name :	SALED AUSTRALIA
File :	SA 3LED SPECTRUM(2835)12V 90mA. IES
Report :	
Catalog :	
LampType :	Point
No. of lamps :	1
Lamp flux :	96.87 lm
Date :	2018-09-11
Comments :	

UF Table [2/2]

Ratios(Distance/Mount Height)	Utilization Factor (Road Side)	Utilization Factor (House Side)
3.400	48.719	49.815
3.500	48.746	49.844
3.600	48.772	49.871
3.700	48.795	49.896
3.800	48.817	49.919
3.900	48.837	49.941
4.000	48.856	49.961
4.100	48.873	49.980
4.200	48.889	49.997
4.300	48.905	50.014
4.400	48.919	50.030
4.500	48.933	50.044
4.600	48.946	50.058
4.700	48.958	50.071
4.800	48.970	50.084
4.900	48.980	50.096
5.000	48.991	50.107
5.100	49.001	50.117
5.200	49.010	50.127
5.300	49.019	50.137
5.400	49.028	50.145
5.500	49.036	50.154
5.600	49.044	50.162
5.700	49.051	50.170
5.800	49.058	50.177
5.900	49.065	50.184
6.000	49.072	50.190

TEST RESULT

Name :	SALED AUSTRALIA
File :	SA 3LED SPECTRUM(2835)12V 90mA. IES
Report :	
Catalog :	
LampType :	Point
No. of lamps :	1
Lamp flux :	96.87 lm
Date :	2018-09-11
Comments :	

IESNA Zonal-Cavity Coefficient Table

Ceiling Cavity Reflectance:	90				70				50			30			10			0
Wall Reflectance:	60	50	30	10	60	50	30	10	50	30	10	50	30	10	50	30	10	0
Room Cavity Ratio	Coefficients of Utilization for 10% Effective Floor Cavity Reflectance																	
0	1.00	1.00	1.00	1.00	0.98	0.98	0.98	0.98	0.96	0.96	0.96	0.94	0.94	0.94	0.92	0.92	0.92	0.91
1	0.93	0.92	0.90	0.87	0.91	0.90	0.88	0.86	0.88	0.86	0.84	0.86	0.85	0.83	0.84	0.83	0.82	0.81
2	0.86	0.83	0.79	0.75	0.83	0.81	0.77	0.74	0.79	0.76	0.73	0.78	0.75	0.72	0.76	0.73	0.71	0.70
3	0.78	0.75	0.69	0.64	0.76	0.73	0.68	0.64	0.71	0.67	0.63	0.70	0.66	0.62	0.68	0.65	0.62	0.60
4	0.71	0.67	0.61	0.56	0.69	0.66	0.60	0.55	0.64	0.59	0.55	0.63	0.58	0.54	0.61	0.57	0.54	0.52
5	0.65	0.61	0.54	0.48	0.63	0.59	0.53	0.48	0.58	0.52	0.48	0.56	0.51	0.47	0.55	0.51	0.47	0.46
6	0.60	0.55	0.48	0.43	0.58	0.54	0.47	0.42	0.52	0.47	0.42	0.51	0.46	0.42	0.50	0.45	0.42	0.40
7	0.55	0.50	0.43	0.38	0.53	0.49	0.42	0.37	0.48	0.42	0.37	0.47	0.41	0.37	0.46	0.41	0.37	0.35
8	0.51	0.46	0.39	0.34	0.49	0.45	0.38	0.33	0.44	0.38	0.33	0.43	0.37	0.33	0.42	0.37	0.33	0.31
9	0.47	0.42	0.35	0.30	0.45	0.41	0.35	0.30	0.40	0.34	0.30	0.39	0.34	0.30	0.38	0.33	0.30	0.28
10	0.43	0.39	0.32	0.27	0.42	0.38	0.31	0.27	0.37	0.31	0.27	0.36	0.31	0.27	0.36	0.31	0.27	0.25

TEST RESULT

Name :	SALED AUSTRALIA
File :	SA 3LED SPECTRUM(2835)12V 90mA. IES
Report :	
Catalog :	
LampType :	Point
No. of lamps :	1
Lamp flux :	96.87 lm
Date :	2018-09-11
Comments :	

TM5 Utilisation Factor Table

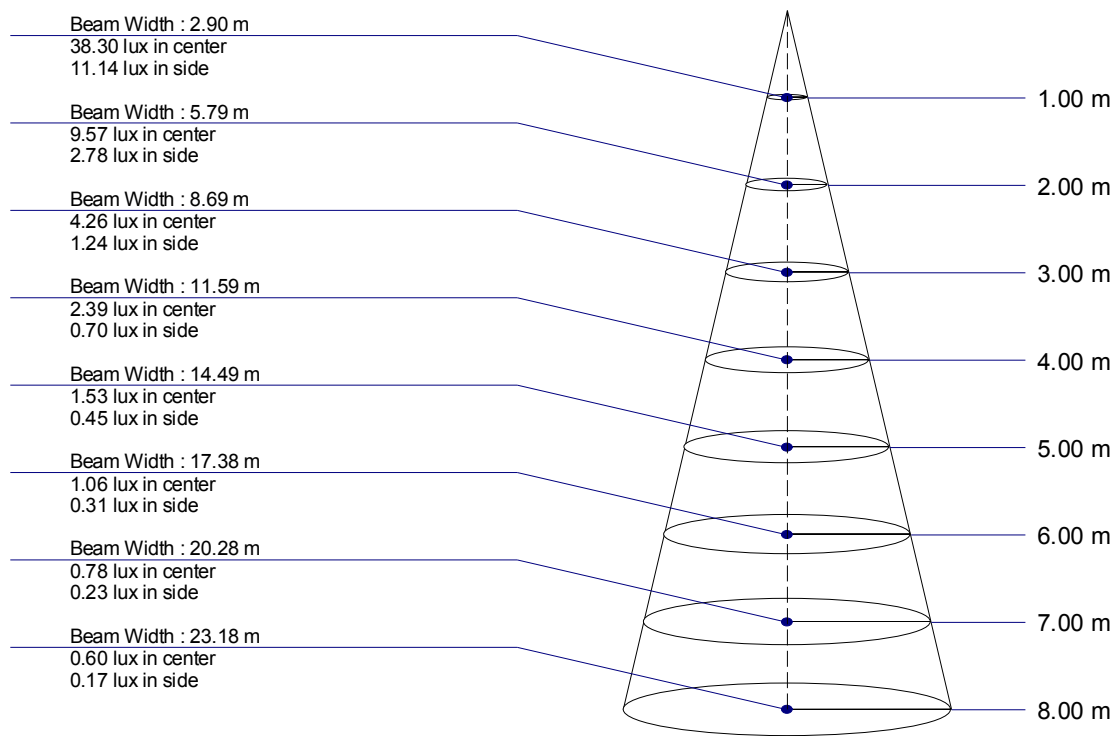
Utilisation Factor UF(F) standard Presentation			SHR NOM = 1.25 SHR MAX = 1.48								
Room Reflectance			Room Index								
C	W	F	0.75	1.00	1.25	1.50	2.00	2.50	3.00	4.00	5.00
0.70	0.50	0.20	0.61	0.72	0.80	0.85	0.92	0.96	0.99	1.03	1.06
	0.30		0.54	0.65	0.73	0.79	0.86	0.91	0.95	1.00	1.03
	0.10		0.48	0.60	0.68	0.74	0.82	0.87	0.91	0.97	1.03
0.50	0.50	0.20	0.59	0.70	0.77	0.82	0.89	0.93	0.96	0.99	1.01
	0.30		0.53	0.64	0.72	0.77	0.84	0.89	0.92	0.96	0.99
	0.10		0.48	0.59	0.67	0.73	0.80	0.85	0.89	0.94	0.97
0.30	0.50	0.20	0.58	0.69	0.75	0.80	0.86	0.90	0.92	0.96	0.98
	0.30		0.52	0.63	0.70	0.75	0.82	0.86	0.89	0.93	0.96
	0.10		0.48	0.59	0.66	0.72	0.79	0.83	0.87	0.91	0.94
0.00	0.00	0.00	0.45	0.57	0.64	0.69	0.75	0.80	0.83	0.87	0.89
Distribution Factor		DF(F)	0.45	0.57	0.64	0.69	0.75	0.80	0.83	0.87	0.89
		DF(W)	0.55	0.44	0.36	0.31	0.25	0.20	0.17	0.13	0.11
		DF(C)	0.00	0.00	0.00	0.00	0.00	0.00	0.00	0.00	0.00
BZ Numbers			4	3	3	3	3	3	3	3	3

Multiply UF values by service correction factors. Calculated in accordance with CIBS Technical Memorandum No.5 1980

TEST RESULT

Name :	SALED AUSTRALIA
File :	SA 3LED SPECTRUM(2835)12V 90mA. IES
Report :	
Catalog :	
LampType :	Point
No. of lamps :	1
Lamp flux :	96.87 lm
Date :	2018-09-11
Comments :	

Conical Illuminance



Average Beam Angle = 110.8°
Max. Beam Angle = 111.7° at $\Phi 1 = 120^\circ \sim \Phi 2 = 300^\circ$
Min. Beam Angle = 109.5° at $\Phi 1 = 90^\circ \sim \Phi 2 = 270^\circ$

TEST RESULT

Name :	SALED AUSTRALIA
File :	SA 3LED SPECTRUM(2835)12V 90mA. IES
Report :	
Catalog :	
LampType :	Point
No. of lamps :	1
Lamp flux :	96.87 lm
Date :	2018-09-11
Comments :	

CutOff Classification

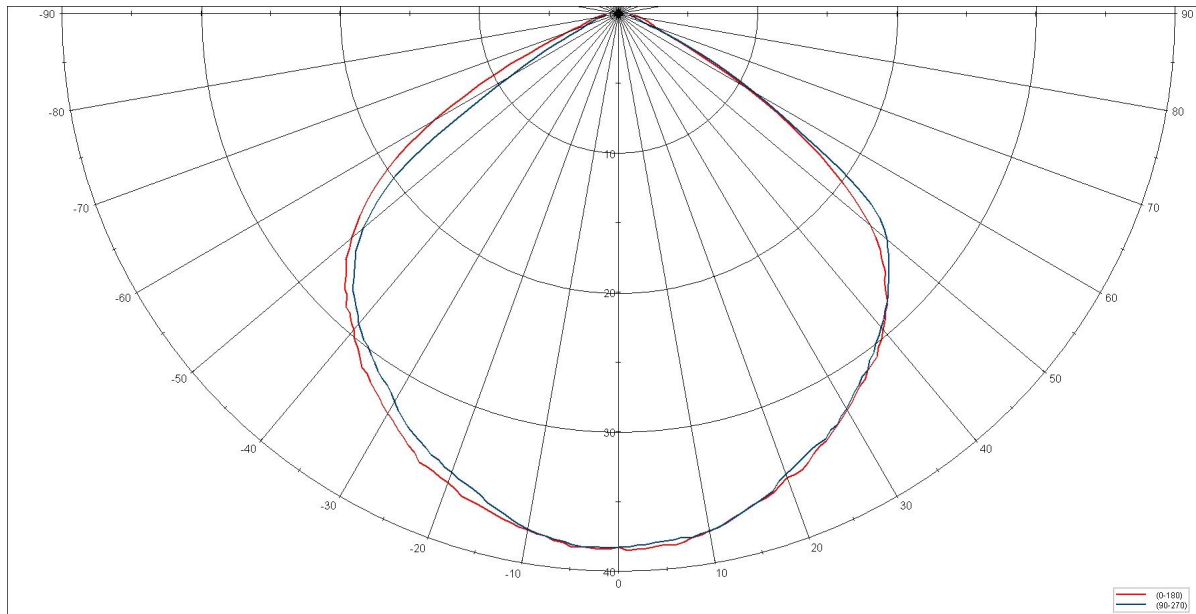
Classification	Candelas at or above	
	90°	80°
Full Cutoff	0	< 10%
Cutoff	< 2.5%	< 10%
Semicutoff	< 5%	< 20%
Noncutoff	NA	NA

Result		
Max. Candela	398.1(cd/1000lm)	
Angle	90°	80°
cd/1000lm	9.29(cd/1000lm) : 2.33(%)	17.45(cd/1000lm) : 4.38(%)
Classification	Cutoff	

TEST RESULT

Name :	SALED AUSTRALIA
File :	SA 3LED SPECTRUM(2835)12V 90mA. IES
Report :	
Catalog :	
LampType :	Point
No. of lamps :	1
Lamp flux :	96.87 lm
Date :	2018-09-11
Comments :	

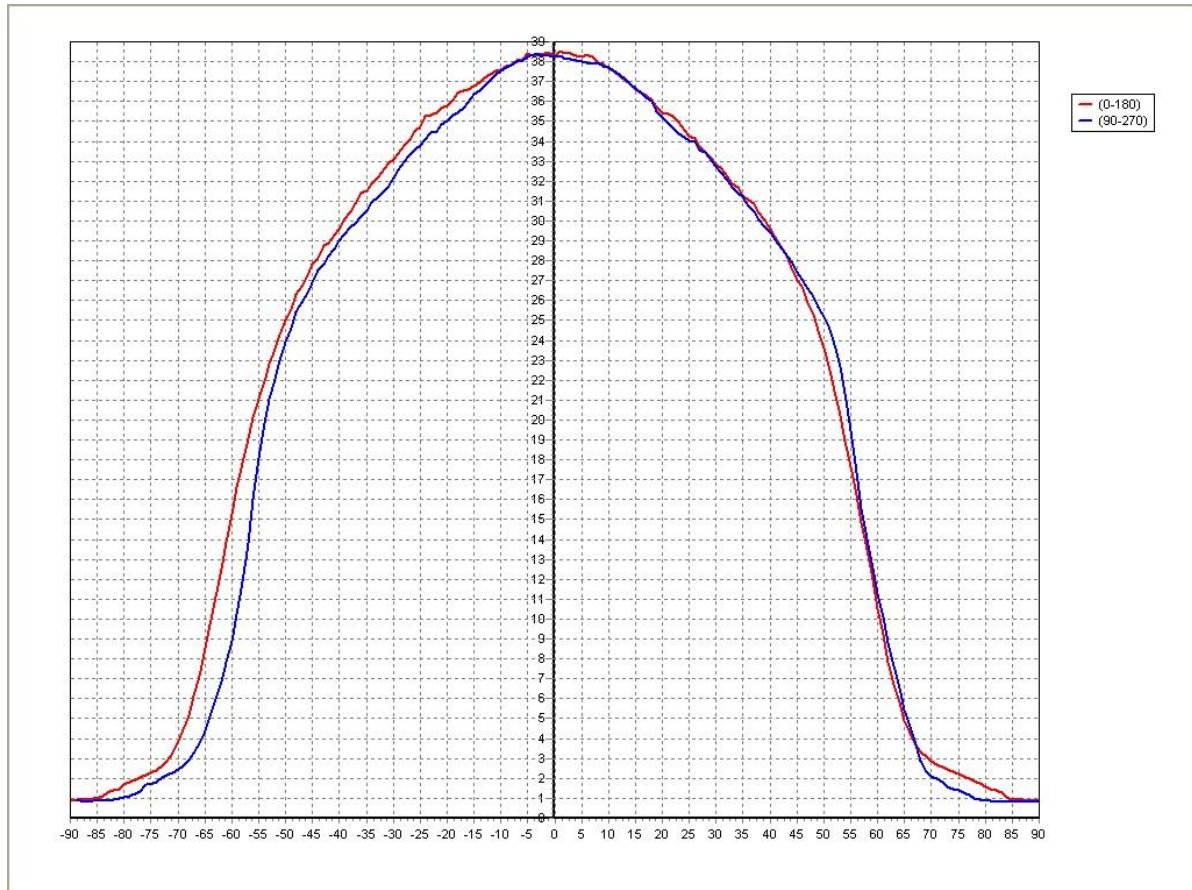
Polar Distribution



TEST RESULT

Name :	SALED AUSTRALIA
File :	SA 3LED SPECTRUM(2835)12V 90mA. IES
Report :	
Catalog :	
LampType :	Point
No. of lamps :	1
Lamp flux :	96.87 lm
Date :	2018-09-11
Comments :	

Cartesian Distrib.

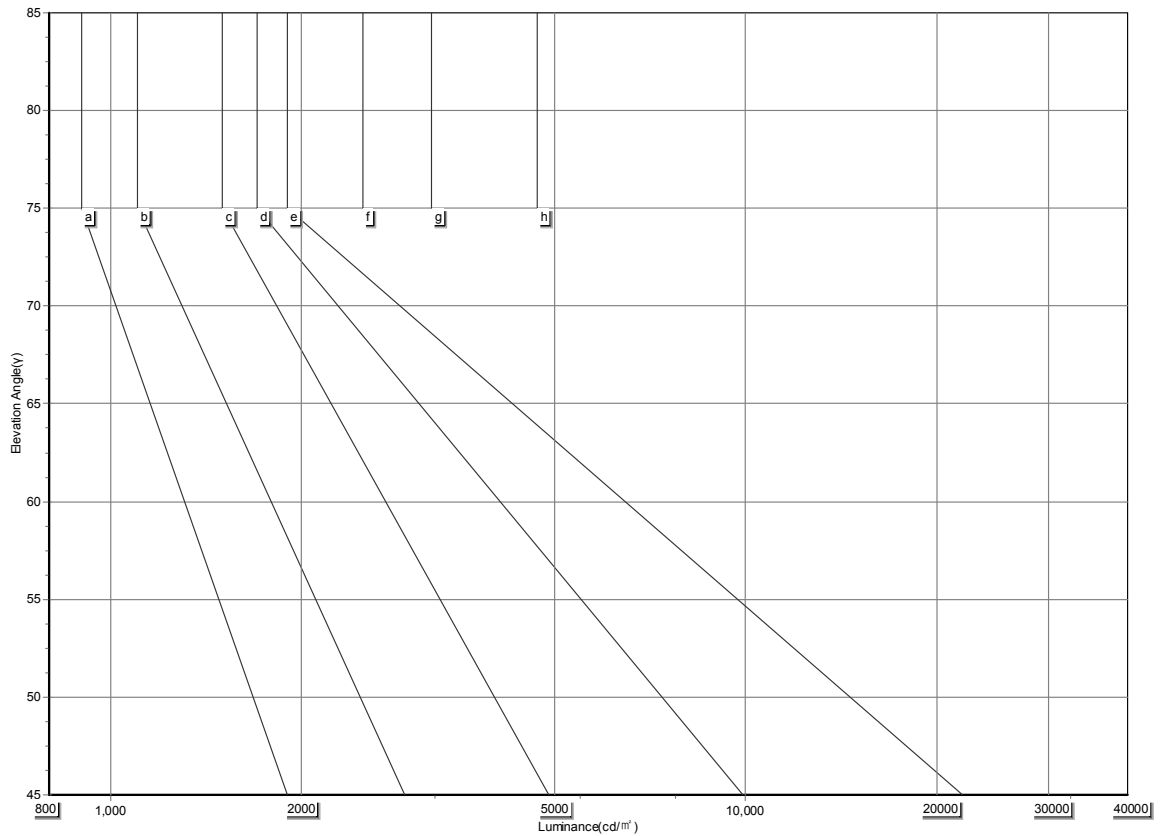


TEST RESULT

Name :	SALED AUSTRALIA
File :	SA 3LED SPECTRUM(2835)12V 90mA. IES
Report :	
Catalog :	
LampType :	Point
No. of lamps :	1
Lamp flux :	96.87 lm
Date :	2018-09-11
Comments :	

Average Luminaire Luminance [cd/m^2]

Cannot calculate luminance for point source or Not Defined!



TEST RESULT

Name :	SALED AUSTRALIA
File :	SA 3LED SPECTRUM(2835)12V 90mA. IES
Report :	
Catalog :	
LampType :	Point
No. of lamps :	1
Lamp flux :	96.87 lm
Date :	2018-09-11
Comments :	

Luminance Limiting Curve

