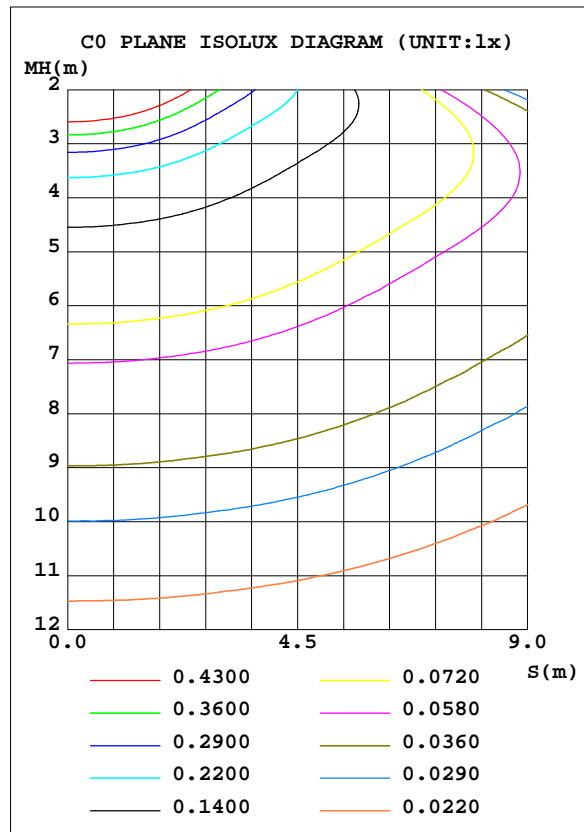
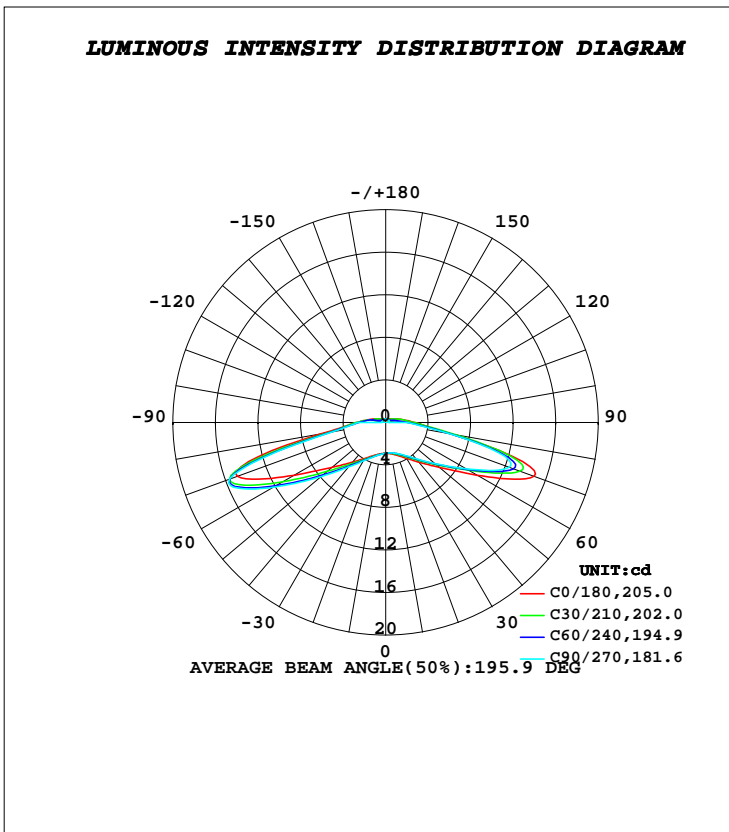


**LUMINAIRE PHOTOMETRIC TEST REPORT**

Test:U:12.000V I:0.0321A P:0.3800W PF:1.0000 Freq:0Hz		
Lamp Flux:50.4356x1 lm		
Name: UV1W	Type: LED	
MFR.:		

DATA OF LAMP		PHOTOMETRIC DATA Eff: 132.73 lm/W			
MODEL		I <sub>max</sub> (cd)	15.84	S/MH(C0/180)	2.97
NOMINAL POWER(W)	0.38	LOR(%)	100.0	S/MH(C90/270)	2.67
RATED VOLTAGE(V)	12	TOTAL FLUX(lm)	50.436	η UP, DN(C0-180)	4.7,42.7
NOMINAL FLUX(lm)	50.4356	CIE CLASS	DIRECT	η UP, DN(C180-360)	4.8,47.8
LAMPS INSIDE	1	η up(%)	9.5	CIBSE SHR NOM	2.00
TEST VOLTAGE(V)	12	η down(%)	90.5	CIBSE SHR MAX	2.00



**C Range: 0 - 360DEG**  
**C Interval: 30.0DEG**  
**Test Speed: HIGH**  
**Temperature:25.3DEG**  
**Operators:DAMIN**  
**Test Date:2021-10-29**

**γ Range: 0 - 180DEG**  
**γ Interval: 1.0DEG**  
**Test System:EO-2000A\_V1 SYSTEM V2.00.443**  
**Humidity:65.0%**  
**Test Distance:8.000m [K=0.7063]**  
**Remarks:**

**ZONAL FLUX DIAGRAM**

**ZONAL FLUX DIAGRAM:**

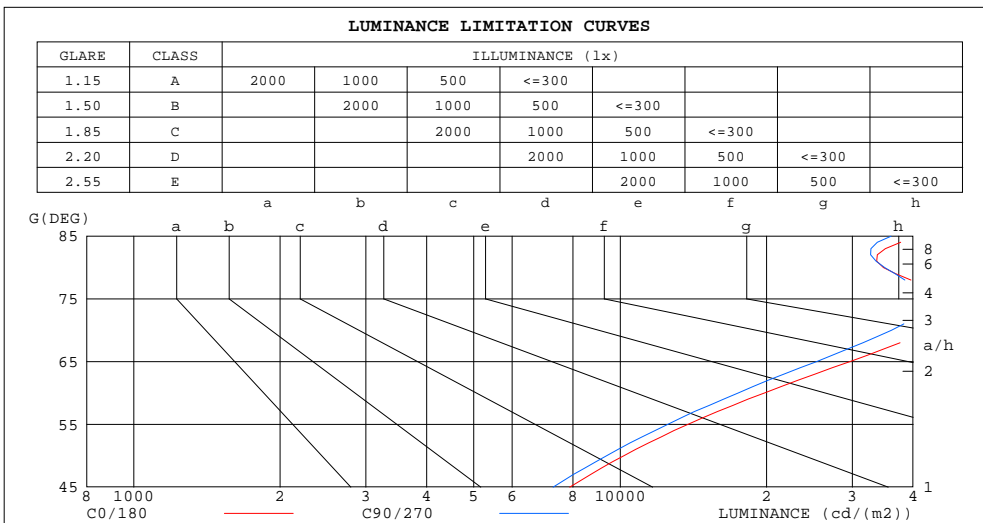
$\gamma$	C0	C45	C90	C135	C180	C225	C270	C315	$\gamma$	$\Phi$ zone	$\Phi$ total	%lum,lamp
10	3.005	2.940	2.916	2.940	3.005	3.055	3.077	3.055	0- 10	0.2817	0.2817	0.56,0.56
20	3.316	3.172	3.118	3.172	3.316	3.412	3.459	3.412	10- 20	0.8911	1.173	2.33,2.33
30	3.901	3.678	3.583	3.678	3.901	4.067	4.178	4.067	20- 30	1.656	2.829	5.61,5.61
40	4.884	4.581	4.466	4.581	4.884	5.227	5.488	5.227	30- 40	2.743	5.572	11,11
50	6.565	6.137	6.030	6.137	6.565	7.394	7.926	7.394	40- 50	4.474	10.05	19.9,19.9
60	9.931	8.930	8.740	8.930	9.931	11.52	12.18	11.52	50- 60	7.497	17.54	34.8,34.8
70	14.83	13.11	12.35	13.11	14.83	15.62	15.63	15.62	60- 70	12.50	30.04	59.6,59.6
80	6.058	6.417	6.079	6.417	6.058	5.316	5.007	5.316	70- 80	11.54	41.58	82.4,82.4
90	2.752	2.368	2.000	2.368	2.752	2.656	2.474	2.656	80- 90	4.060	45.64	90.5,90.5
100	1.642	1.336	0.3469	1.336	1.642	1.454	0.3518	1.454	90-100	1.865	47.50	94.2,94.2
110	1.036	0.8326	0.3599	0.8326	1.036	0.8107	0.3436	0.8107	100-110	1.020	48.52	96.2,96.2
120	0.7104	0.5496	0.3452	0.5496	0.7104	0.5698	0.3329	0.5698	110-120	0.6438	49.17	97.5,97.5
130	0.5445	0.4294	0.3296	0.4294	0.5445	0.4472	0.3190	0.4472	120-130	0.4377	49.60	98.4,98.4
140	0.4680	0.3792	0.3301	0.3792	0.4680	0.3878	0.3288	0.3878	130-140	0.3179	49.92	99,99
150	0.4366	0.3509	0.3229	0.3509	0.4366	0.3586	0.3321	0.3586	140-150	0.2365	50.16	99.5,99.5
160	0.3223	0.3196	0.3207	0.3196	0.3223	0.3280	0.3262	0.3280	150-160	0.1525	50.31	99.8,99.8
170	0.3284	0.3262	0.3263	0.3262	0.3284	0.3305	0.3296	0.3305	160-170	0.0924	50.40	99.9,99.9
180	0.3322	0.3288	0.3296	0.3288	0.3322	0.3297	0.3296	0.3297	170-180	0.0314	50.44	100,100
DEG	LUMINOUS INTENSITY:cd									UNIT:lm		

**C Range: 0 - 360DEG**  
**C Interval: 30.0DEG**  
**Test Speed: HIGH**  
**Temperature:25.3DEG**  
**Operators:DAMIN**  
**Test Date:2021-10-29**

**$\gamma$  Range: 0 - 180DEG**  
 **$\gamma$  Interval: 1.0DEG**  
**Test System:SO-2000A\_V1 SYSTEM V2.00.443**  
**Humidity:65.0%**  
**Test Distance:8.000m [K=0.7063]**  
**Remarks:**

**LUMINANCE LIMITATION CURVES**

Test:U:12.000V I:0.0321A P:0.3800W PF:1.0000 Freq:0Hz		
Lamp Flux:50.4356x1 lm		
Name: UV1W	Type: LED	
MFR.:		



LUMINANCE cd/(m2)		
G(DEG)	C0/180	C90/270
85	42301	36068
80	34747	35002
75	47486	42350
70	43200	36117
65	29658	25317
60	19781	17478
55	13780	12527
50	10172	9381
45	7878	7283

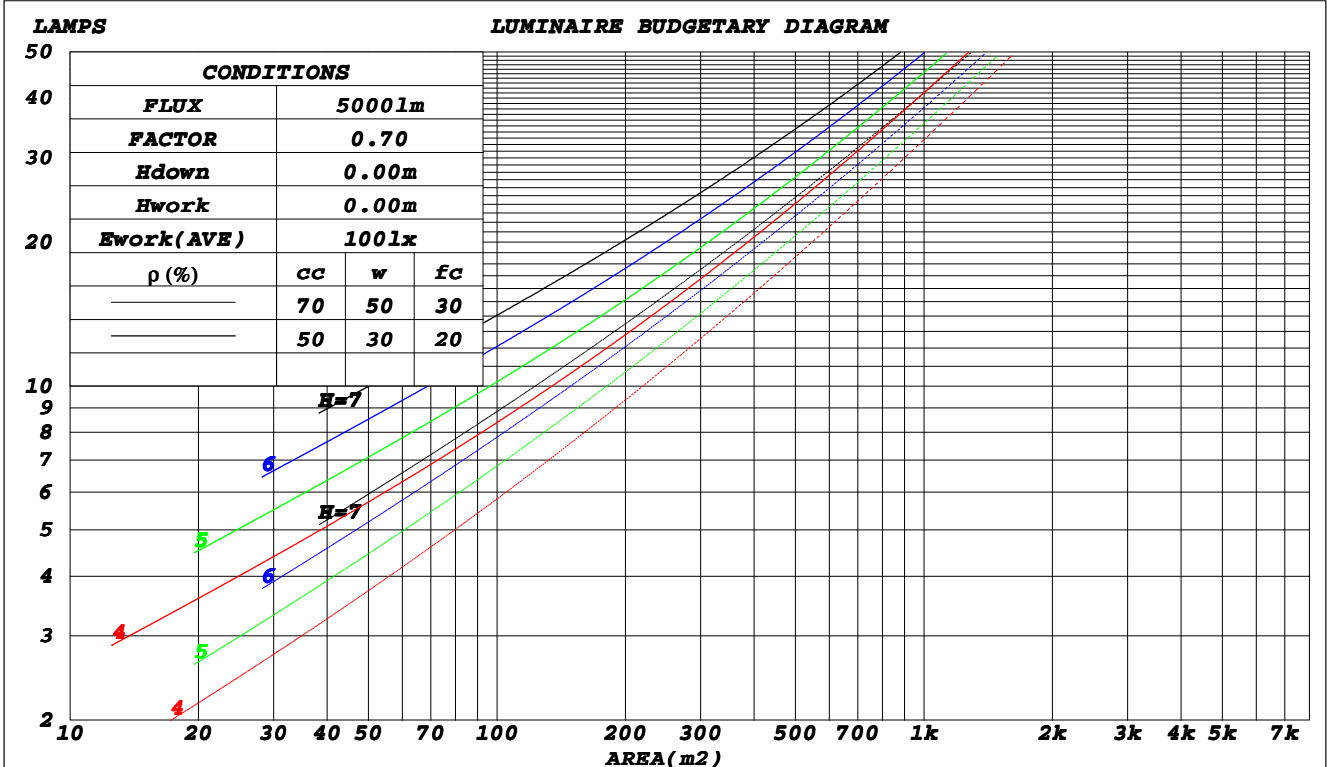
**C Range: 0 - 360DEG**  
**C Interval: 30.0DEG**  
**Test Speed: HIGH**  
**Temperature: 25.3DEG**  
**Operators: DAMIN**  
**Test Date: 2021-10-29**

**γ Range: 0 - 180DEG**  
**γ Interval: 1.0DEG**  
**Test System: EGO-2000A\_V1 SYSTEM V2.00.443**  
**Humidity: 65.0%**  
**Test Distance: 8.000m [K=0.7063]**  
**Remarks:**

CU AND LUMINAIRE BUDGETARY ESTIMATE DIAGRAM

Test:U:12.000V I:0.0321A P:0.3800W PF:1.0000 Freq:0Hz		
Lamp Flux:50.4356x1 lm		
Name: UV1W	Type: LED	
MFR.:		

$\rho_{cc}$	80%			70%			50%			30%			10%			0
$\rho_w$	50%	30%	10%	50%	30%	10%	50%	30%	10%	50%	30%	10%	50%	30%	10%	0
$\rho_{fc}$	20%			20%			20%			20%			20%			0
<b>RCR</b>	<b>RCR:Room Cavity Ratio</b>						<b>Coefficients of Utilization(CU)</b>									
0.0	1.17	1.17	1.17	1.13	1.13	1.13	1.06	1.06	1.06	.99	.99	.99	.93	.93	.93	.90
1.0	.92	.85	.79	.89	.82	.77	.82	.77	.72	.77	.72	.68	.71	.68	.65	.61
2.0	.74	.64	.55	.71	.62	.54	.65	.58	.51	.60	.54	.48	.56	.50	.46	.42
3.0	.61	.49	.40	.58	.48	.39	.54	.45	.37	.49	.42	.35	.45	.39	.33	.30
4.0	.51	.40	.31	.49	.38	.30	.45	.36	.28	.41	.33	.27	.38	.31	.25	.22
5.0	.44	.33	.24	.42	.32	.24	.39	.30	.22	.36	.28	.21	.33	.26	.20	.17
6.0	.39	.28	.20	.37	.27	.19	.34	.25	.18	.31	.23	.17	.29	.22	.16	.13
7.0	.34	.24	.16	.33	.23	.16	.30	.22	.15	.28	.20	.14	.26	.19	.13	.11
8.0	.31	.21	.14	.30	.20	.14	.27	.19	.13	.25	.18	.12	.23	.16	.11	.09
9.0	.28	.18	.12	.27	.18	.12	.25	.17	.11	.23	.16	.10	.21	.15	.10	.08
10.0	.26	.16	.10	.25	.16	.10	.23	.15	.10	.21	.14	.09	.20	.13	.09	.07



C Range: 0 - 360DEG  
 C Interval: 30.0DEG  
 Test Speed: HIGH  
 Temperature: 25.3DEG  
 Operators: DAMIN  
 Test Date: 2021-10-29

$\gamma$  Range: 0 - 180DEG  
 $\gamma$  Interval: 1.0DEG  
 Test System: EO-2000A\_V1 SYSTEM V2.00.443  
 Humidity: 65.0%  
 Test Distance: 8.000m [K=0.7063]  
 Remarks:

**WEC AND CCEC**

Test:U:12.000V I:0.0321A P:0.3800W PF:1.0000 Freq:0Hz		
Lamp Flux:50.4356x1 lm		
Name: UV1W	Type: LED	
MFR.:		

$\rho_{cc}$	80%			70%			50%			30%			10%			0
$\rho_w$	50%	30%	10%	50%	30%	10%	50%	30%	10%	50%	30%	10%	50%	30%	10%	0
$\rho_{fc}$	20%			20%			20%			20%			20%			0
<b>RCR</b>	<b>RCR:Room Cavity Ratio</b>						<b>Wall Exitance Coefficients(WEC)</b>									
0.0																
1.0	.494	.281	.089	.484	.276	.088	.464	.266	.085	.446	.257	.083	.430	.249	.080	
2.0	.429	.235	.072	.419	.231	.071	.401	.223	.069	.385	.216	.068	.370	.209	.066	
3.0	.374	.199	.060	.365	.196	.059	.349	.189	.057	.334	.183	.056	.320	.177	.055	
4.0	.329	.171	.050	.321	.168	.050	.307	.163	.049	.293	.157	.047	.280	.152	.046	
5.0	.293	.149	.043	.286	.147	.043	.273	.142	.042	.260	.137	.041	.249	.133	.040	
6.0	.263	.132	.038	.257	.130	.037	.245	.126	.037	.234	.122	.036	.223	.118	.035	
7.0	.239	.118	.033	.233	.116	.033	.222	.112	.032	.212	.109	.032	.203	.105	.031	
8.0	.218	.107	.030	.213	.105	.030	.203	.102	.029	.194	.098	.028	.186	.095	.028	
9.0	.201	.097	.027	.196	.096	.027	.188	.093	.026	.179	.090	.026	.171	.087	.025	
10.0	.186	.089	.025	.182	.088	.025	.174	.085	.024	.166	.083	.023	.159	.080	.023	

$\rho_{cc}$	80%			70%			50%			30%			10%			0
$\rho_w$	50%	30%	10%	50%	30%	10%	50%	30%	10%	50%	30%	10%	50%	30%	10%	0
$\rho_{fc}$	20%			20%			20%			20%			20%			0
<b>RCR</b>	<b>RCR:Room Cavity Ratio</b>						<b>Ceiling Cavity Exitance Coefficients(CCEC)</b>									
0.0	.263	.263	.263	.225	.225	.225	.153	.153	.153	.088	.088	.088	.028	.028	.028	
1.0	.266	.228	.193	.228	.195	.166	.156	.134	.115	.090	.078	.067	.029	.025	.022	
2.0	.264	.205	.155	.226	.176	.134	.155	.122	.093	.089	.071	.055	.029	.023	.018	
3.0	.258	.189	.134	.222	.163	.116	.152	.113	.081	.088	.066	.048	.028	.021	.016	
4.0	.251	.177	.121	.215	.153	.105	.148	.107	.074	.086	.062	.044	.028	.020	.014	
5.0	.242	.168	.112	.208	.145	.098	.143	.101	.069	.083	.059	.041	.027	.019	.014	
6.0	.234	.160	.107	.201	.138	.093	.139	.097	.066	.080	.057	.039	.026	.019	.013	
7.0	.225	.153	.103	.194	.133	.089	.134	.093	.063	.078	.055	.038	.025	.018	.012	
8.0	.218	.148	.100	.187	.128	.087	.130	.090	.062	.075	.053	.037	.024	.017	.012	
9.0	.210	.143	.097	.181	.124	.085	.125	.087	.060	.073	.051	.036	.024	.017	.012	
10.0	.203	.138	.095	.175	.120	.083	.122	.085	.059	.071	.050	.035	.023	.016	.012	

**C Range: 0 - 360DEG**  
**C Interval: 30.0DEG**  
**Test Speed: HIGH**  
**Temperature:25.3DEG**  
**Operators:DAMIN**  
**Test Date:2021-10-29**

**$\gamma$  Range: 0 - 180DEG**  
 **$\gamma$  Interval: 1.0DEG**  
**Test System:GO-2000A\_V1 SYSTEM V2.00.443**  
**Humidity:65.0%**  
**Test Distance:8.000m [K=0.7063]**  
**Remarks:**

**UGR(Unified Glare Rating) Table**

Test:U:12.000V I:0.0321A P:0.3800W PF:1.0000 Freq:0Hz		
Lamp Flux:50.4356x1 lm		
Name: UV1W	Type: LED	
MFR.:		

ceiling/cavity	0.7	0.7	0.5	0.5	0.3	0.7	0.7	0.5	0.5	0.3
walls	0.5	0.3	0.5	0.3	0.3	0.5	0.3	0.5	0.3	0.3
working plane	0.2	0.2	0.2	0.2	0.2	0.2	0.2	0.2	0.2	0.2
Room dimensions	Viewed crosswise					Viewed endwise				
<b>x = 2H y = 2H</b>	22.6	24.4	23.0	24.8	25.2	22.1	23.9	22.5	24.3	24.8
3H	27.9	29.6	28.4	30.0	30.5	27.1	28.8	27.6	29.2	29.7
4H	29.9	31.6	30.4	32.0	32.5	29.1	30.8	29.6	31.2	31.7
6H	30.8	32.3	31.3	32.8	33.3	30.2	31.7	30.6	32.2	32.7
8H	31.0	32.5	31.5	33.0	33.5	30.4	31.9	30.9	32.4	32.9
12H	31.3	32.7	31.8	33.2	33.7	30.6	32.1	31.1	32.6	33.1
<b>4H 2H</b>	24.2	25.8	24.6	26.2	26.7	23.9	25.5	24.4	26.0	26.5
3H	29.2	30.7	29.7	31.2	31.7	28.6	30.1	29.2	30.6	31.1
4H	31.2	32.6	31.8	33.1	33.7	30.6	31.9	31.1	32.5	33.0
6H	32.2	33.4	32.7	33.9	34.5	31.7	32.9	32.2	33.4	34.0
8H	32.5	33.6	33.0	34.2	34.8	31.9	33.1	32.5	33.6	34.3
12H	32.7	33.8	33.3	34.4	35.0	32.2	33.3	32.8	33.8	34.5
<b>8H 4H</b>	31.8	32.9	32.3	33.5	34.1	31.3	32.4	31.8	33.0	33.6
6H	32.9	33.8	33.4	34.4	35.1	32.4	33.4	33.0	34.0	34.6
8H	33.2	34.1	33.8	34.7	35.4	32.8	33.7	33.4	34.3	34.9
12H	33.7	34.4	34.3	35.0	35.7	33.1	33.9	33.8	34.5	35.2
<b>12H 4H</b>	31.8	32.9	32.4	33.4	34.1	31.3	32.4	31.9	32.9	33.6
6H	32.9	33.8	33.5	34.4	35.1	32.5	33.4	33.1	34.0	34.7
8H	33.4	34.2	34.0	34.8	35.5	33.0	33.7	33.6	34.3	35.0
<b>Variations with the observer position at spacings(CIE Pub.117):</b>										
<b>S = 1.0H</b>	+ 0.0 / - 0.1					+ 0.0 / - 0.1				
<b>1.5H</b>	+ 0.1 / - 0.2					+ 0.1 / - 0.2				
<b>2.0H</b>	+ 0.2 / - 0.2					+ 0.2 / - 0.3				

CIE Pub.117, 50.44 lm Total Lamp Luminous Flux Corrected (8log(F/F0) = -10.4)  
 Area: 0.001 m2

**C Range: 0 - 360DEG**  
**C Interval: 30.0DEG**  
**Test Speed: HIGH**  
**Temperature:25.3DEG**  
**Operators:DAMIN**  
**Test Date:2021-10-29**

**γ Range: 0 - 180DEG**  
**γ Interval: 1.0DEG**  
**Test System:GO-2000A\_V1 SYSTEM V2.00.443**  
**Humidity:65.0%**  
**Test Distance:8.000m [K=0.7063]**  
**Remarks:**

**UTILIZATION FACTORS TABLE**

Test:U:12.000V I:0.0321A P:0.3800W PF:1.0000 Freq:0Hz		
Lamp Flux:50.4356x1 lm		
Name: UV1W	Type: LED	
MFR.:		

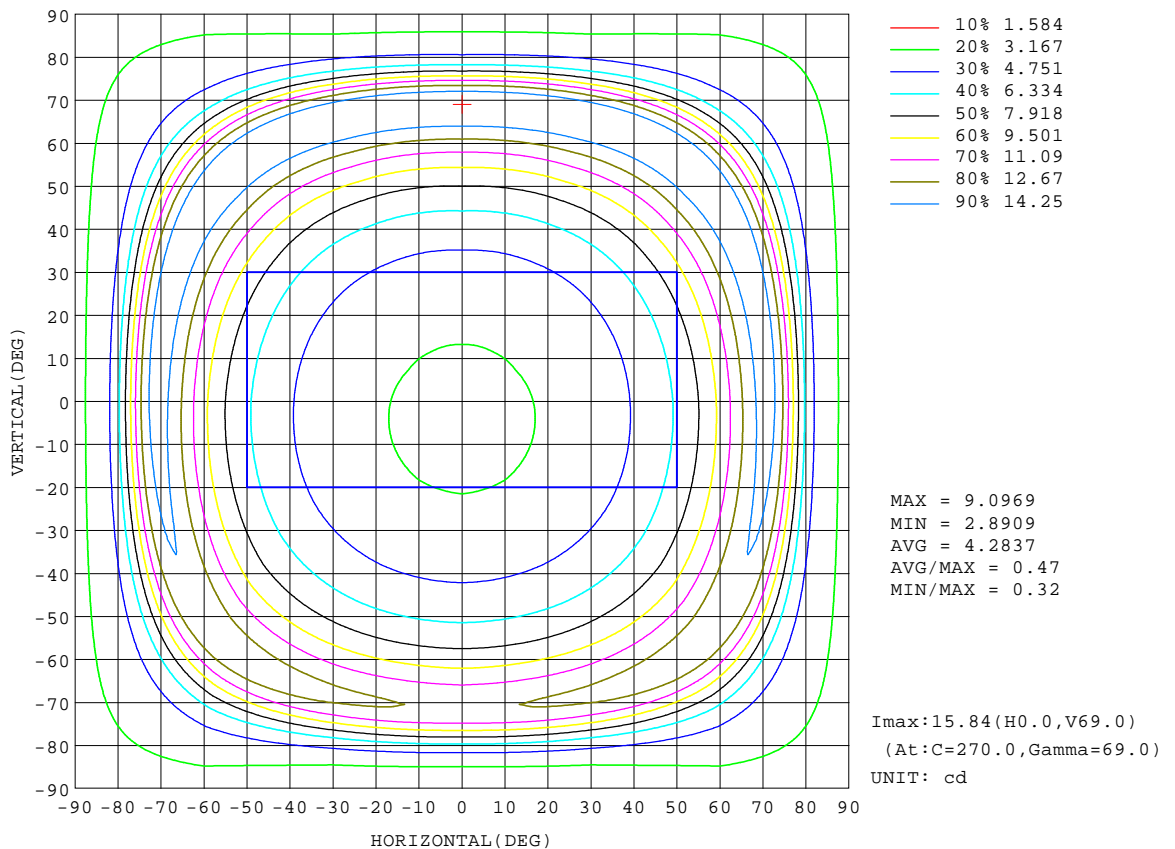
REFLECTANCE										
Ceiling	0.8	0.8	0.8	0.7	0.7	0.7	0.5	0.5	0.5	0
Walls	0.7	0.5	0.3	0.7	0.5	0.3	0.7	0.5	0.3	0
Working plane	0.2	0.2	0.2	0.2	0.2	0.2	0.2	0.2	0.2	0
<b>ROOM INDEX</b>	<b>UTILIZATION FACTORS(PERCENT) <math>k(RI) \times RCR = 5</math></b>									
<b>k = 0.60</b>	40	26	17	39	25	17	37	24	17	9
<b>0.80</b>	48	32	23	46	32	22	44	31	22	13
<b>1.00</b>	55	39	29	53	38	28	50	40	27	17
<b>1.25</b>	62	47	36	60	45	35	56	43	34	23
<b>1.50</b>	68	53	42	66	51	41	61	49	40	28
<b>2.00</b>	77	63	53	74	61	52	69	58	50	37
<b>2.50</b>	83	70	61	80	68	59	74	65	57	44
<b>3.00</b>	88	77	67	85	74	66	79	70	63	50
<b>4.00</b>	94	85	77	91	82	75	85	78	71	58
<b>5.00</b>	99	90	84	95	88	81	89	83	77	64
<b>ROOM INDEX</b>	<b>UF(total)</b>									<b>Direct</b>
<b>According to DIN EN 13032-2 2004</b>			<b>Suspended</b>				<b>SHRNOM = 1.25</b>			

**C Range: 0 - 360DEG**  
**C Interval: 30.0DEG**  
**Test Speed: HIGH**  
**Temperature:25.3DEG**  
**Operators:DAMIN**  
**Test Date:2021-10-29**

**$\gamma$  Range: 0 - 180DEG**  
 **$\gamma$  Interval: 1.0DEG**  
**Test System:EO-2000A\_V1 SYSTEM V2.00.443**  
**Humidity:65.0%**  
**Test Distance:8.000m [K=0.7063]**  
**Remarks:**

**ISOCANDELA DIAGRAM**

Test:U:12.000V I:0.0321A P:0.3800W PF:1.0000 Freq:0Hz		
Lamp Flux:50.4356x1 lm		
Name: UV1W	Type: LED	
MFR.:		



**C Range: 0 - 360DEG**  
**C Interval: 30.0DEG**  
**Test Speed: HIGH**  
**Temperature:25.3DEG**  
**Operators:DAMIN**  
**Test Date:2021-10-29**

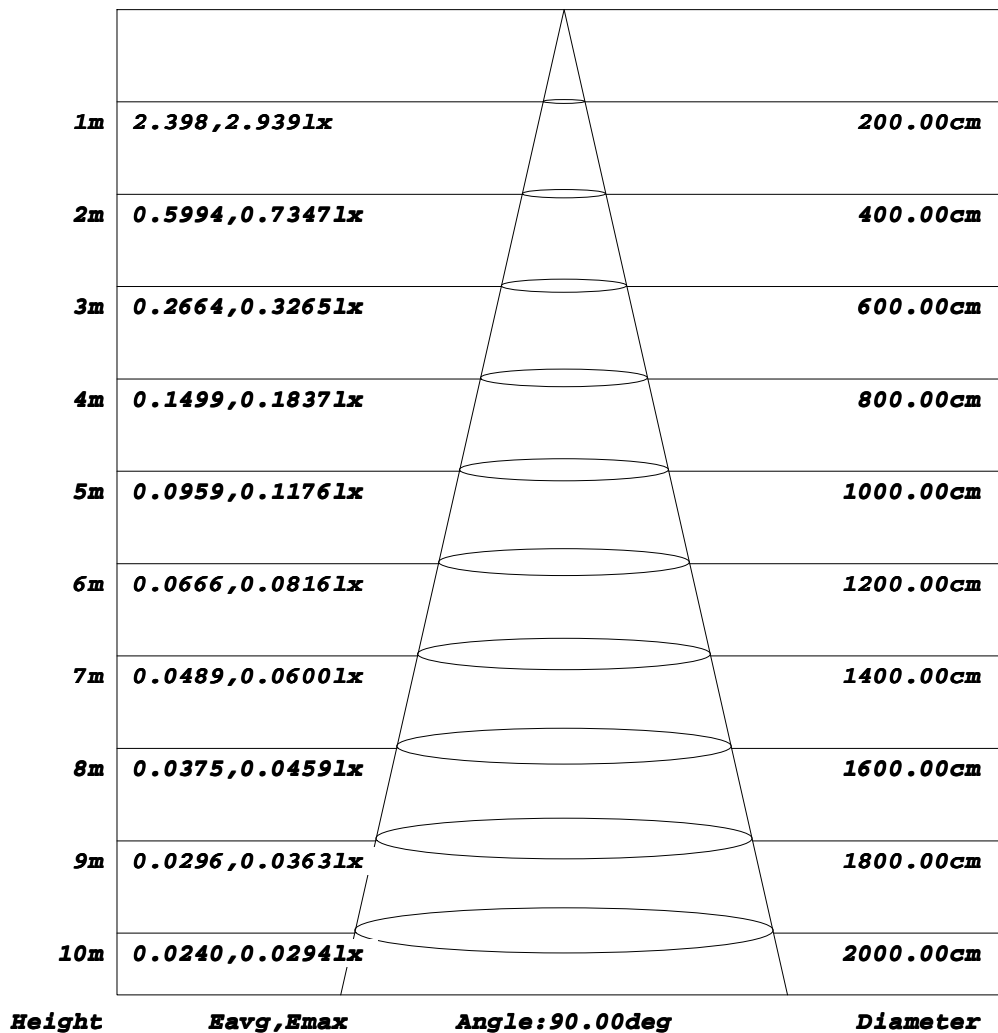
**γ Range: 0 - 180DEG**  
**γ Interval: 1.0DEG**  
**Test System:EO-2000A\_V1 SYSTEM V2.00.443**  
**Humidity:65.0%**  
**Test Distance:8.000m [K=0.7063]**  
**Remarks:**



**AAI Figure**

Test:U:12.000V I:0.0321A P:0.3800W PF:1.0000 Freq:0Hz		
Lamp Flux:50.4356x1 lm		
Name: UV1W	Type: LED	
MFR.:		

**Flux out:7.532 lm**



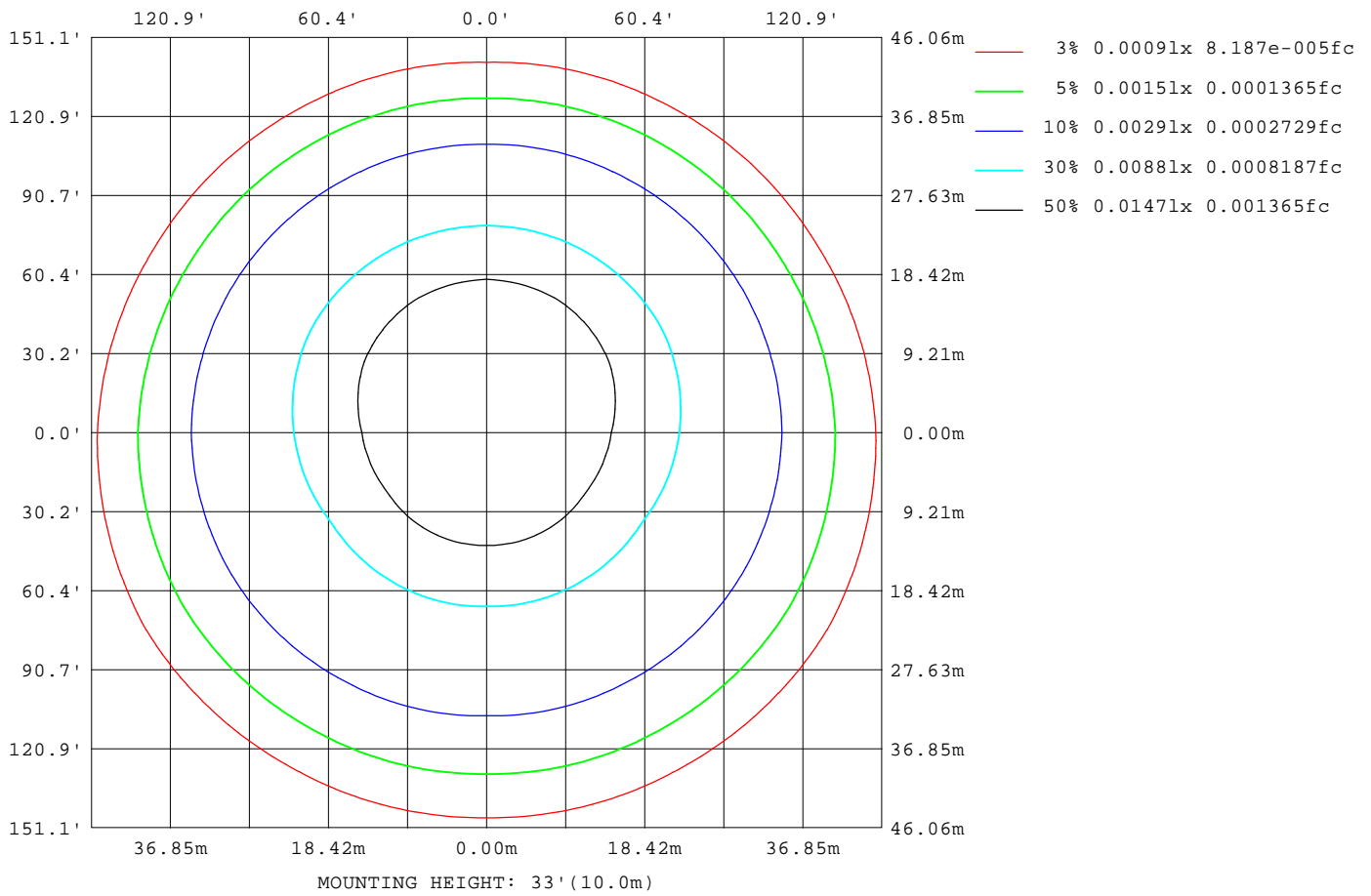
Note: The Curves indicate the illuminated area and the average illumination when the luminaire is at different distance.

**C Range: 0 - 360DEG**  
**C Interval: 30.0DEG**  
**Test Speed: HIGH**  
**Temperature: 25.3DEG**  
**Operators: DAMIN**  
**Test Date: 2021-10-29**

**γ Range: 0 - 180DEG**  
**γ Interval: 1.0DEG**  
**Test System: GO-2000A\_V1 SYSTEM V2.00.443**  
**Humidity: 65.0%**  
**Test Distance: 8.000m [K=0.7063]**  
**Remarks:**

**ISOLUX DIAGRAM**

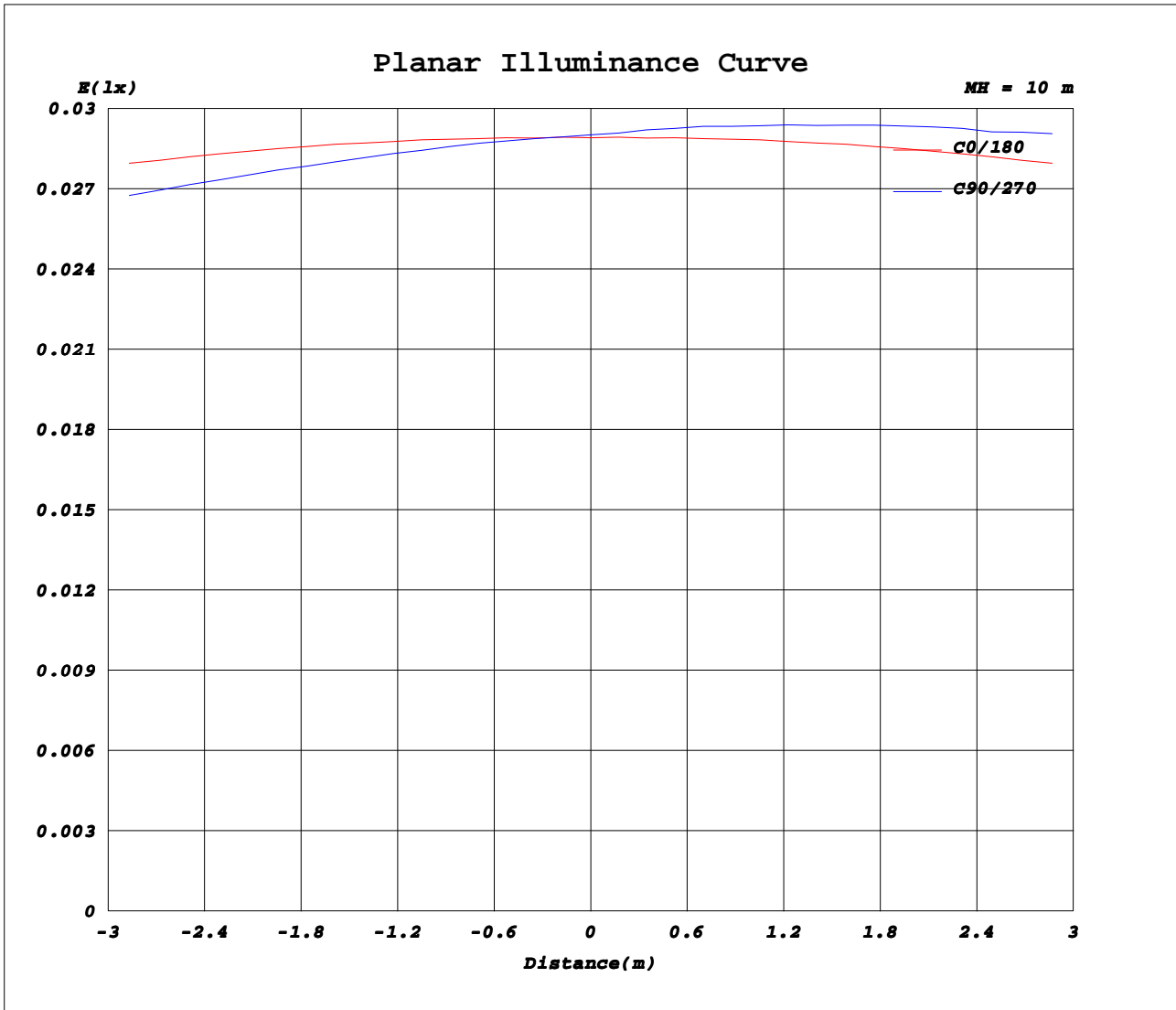
Test:U:12.000V I:0.0321A P:0.3800W PF:1.0000 Freq:0Hz		
Lamp Flux:50.4356x1 lm		
Name: UV1W	Type: LED	
MFR.:		



**C Range: 0 - 360DEG**  
**C Interval: 30.0DEG**  
**Test Speed: HIGH**  
**Temperature: 25.3DEG**  
**Operators: DAMIN**  
**Test Date: 2021-10-29**

**γ Range: 0 - 180DEG**  
**γ Interval: 1.0DEG**  
**Test System: SO-2000A\_V1 SYSTEM V2.00.443**  
**Humidity: 65.0%**  
**Test Distance: 8.000m [K=0.7063]**  
**Remarks:**

**Planar Illuminance Curve**



**C Range: 0 - 360DEG**  
**C Interval: 30.0DEG**  
**Test Speed: HIGH**  
**Temperature: 25.3DEG**  
**Operators: DAMIN**  
**Test Date: 2021-10-29**

**γ Range: 0 - 180DEG**  
**γ Interval: 1.0DEG**  
**Test System: EO-2000A\_V1 SYSTEM V2.00.443**  
**Humidity: 65.0%**  
**Test Distance: 8.000m [K=0.7063]**  
**Remarks:**

**LUMINOUS DISTRIBUTION INTENSITY DATA**

Test:U:12.000V I:0.0321A P:0.3800W PF:1.0000 Freq:0Hz		
Lamp Flux:50.4356x1 lm		
Name: UV1W	Type: LED	
MFR.:		

Table--1

UNIT: cd

C( DEG) γ (DEG)	0	30	60	90	120	150	180	210	240	270	300	330							
0	2.90	2.90	2.90	2.90	2.90	2.90	2.90	2.90	2.90	2.90	2.90	2.90							
5	2.93	2.90	2.89	2.89	2.89	2.90	2.93	2.95	2.96	2.97	2.96	2.95							
10	3.00	2.96	2.92	2.92	2.92	2.96	3.00	3.04	3.07	3.08	3.07	3.04							
15	3.13	3.06	3.00	2.99	3.00	3.06	3.13	3.19	3.22	3.23	3.22	3.19							
20	3.32	3.21	3.14	3.12	3.14	3.21	3.32	3.39	3.43	3.46	3.43	3.39							
25	3.57	3.43	3.34	3.31	3.34	3.43	3.57	3.67	3.72	3.77	3.72	3.67							
30	3.90	3.73	3.63	3.58	3.63	3.73	3.90	4.02	4.11	4.18	4.11	4.02							
35	4.33	4.12	4.01	3.95	4.01	4.12	4.33	4.48	4.63	4.74	4.63	4.48							
40	4.88	4.64	4.52	4.47	4.52	4.64	4.88	5.10	5.35	5.49	5.35	5.10							
45	5.59	5.32	5.20	5.15	5.20	5.32	5.59	5.95	6.30	6.52	6.30	5.95							
50	6.57	6.20	6.07	6.03	6.07	6.20	6.57	7.15	7.64	7.93	7.64	7.15							
55	7.94	7.37	7.26	7.19	7.26	7.37	7.94	8.86	9.50	9.79	9.50	8.86							
60	9.93	9.01	8.85	8.74	8.85	9.01	9.93	11.2	11.9	12.2	11.9	11.2							
65	12.6	11.3	10.9	10.7	10.9	11.3	12.6	14.0	14.6	14.8	14.6	14.0							
70	14.8	13.4	12.8	12.4	12.8	13.4	14.8	15.6	15.6	15.6	15.6	15.6							
75	12.3	12.1	11.3	11.0	11.3	12.1	12.3	11.5	10.8	10.4	10.8	11.5							
80	6.06	6.68	6.16	6.08	6.16	6.68	6.06	5.41	5.22	5.01	5.22	5.41							
85	3.70	3.83	3.25	3.14	3.25	3.83	3.70	3.66	3.38	3.33	3.38	3.66							
90	2.75	2.68	2.05	2.00	2.05	2.68	2.75	2.76	2.55	2.47	2.55	2.76							
95	2.09	2.04	1.42	0.33	1.42	2.04	2.09	2.10	1.94	0.35	1.94	2.10							
100	1.64	1.60	1.08	0.35	1.08	1.60	1.64	1.44	1.47	0.35	1.47	1.44							
105	1.29	1.27	0.85	0.36	0.85	1.27	1.29	0.97	0.77	0.35	0.77	0.97							
110	1.04	1.01	0.66	0.36	0.66	1.01	1.04	1.01	0.61	0.34	0.61	1.01							
115	0.84	0.80	0.51	0.36	0.51	0.80	0.84	0.82	0.51	0.34	0.51	0.82							
120	0.71	0.67	0.43	0.35	0.43	0.67	0.71	0.69	0.45	0.33	0.45	0.69							
125	0.61	0.57	0.39	0.33	0.39	0.57	0.61	0.59	0.42	0.32	0.42	0.59							
130	0.54	0.50	0.36	0.33	0.36	0.50	0.54	0.52	0.37	0.32	0.37	0.52							
135	0.50	0.46	0.34	0.33	0.34	0.46	0.50	0.47	0.35	0.32	0.35	0.47							
140	0.47	0.42	0.34	0.33	0.34	0.42	0.47	0.44	0.34	0.33	0.34	0.44							
145	0.45	0.40	0.33	0.33	0.33	0.40	0.45	0.42	0.33	0.33	0.33	0.42							
150	0.44	0.38	0.32	0.32	0.32	0.38	0.44	0.39	0.33	0.33	0.33	0.39							
155	0.32	0.32	0.32	0.32	0.32	0.32	0.32	0.33	0.33	0.33	0.33	0.33							
160	0.32	0.32	0.32	0.32	0.32	0.32	0.32	0.33	0.33	0.33	0.33	0.33							
165	0.32	0.32	0.32	0.32	0.32	0.32	0.32	0.33	0.33	0.32	0.33	0.33							
170	0.33	0.33	0.33	0.33	0.33	0.33	0.33	0.33	0.33	0.33	0.33	0.33							
175	0.33	0.33	0.33	0.33	0.33	0.33	0.33	0.33	0.33	0.33	0.33	0.33							
180	0.33	0.33	0.33	0.33	0.33	0.33	0.33	0.33	0.33	0.33	0.33	0.33							

**C Range: 0 - 360DEG**  
**C Interval: 30.0DEG**  
**Test Speed: HIGH**  
**Temperature: 25.3DEG**  
**Operators: DAMIN**  
**Test Date: 2021-10-29**

**γ Range: 0 - 180DEG**  
**γ Interval: 1.0DEG**  
**Test System: SO-2000A\_V1 SYSTEM V2.00.443**  
**Humidity: 65.0%**  
**Test Distance: 8.000m [K=0.7063]**  
**Remarks:**