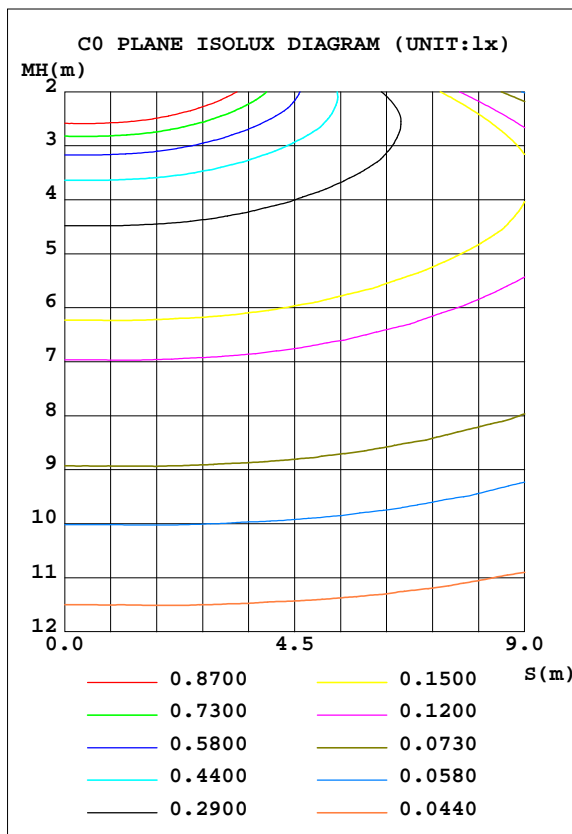
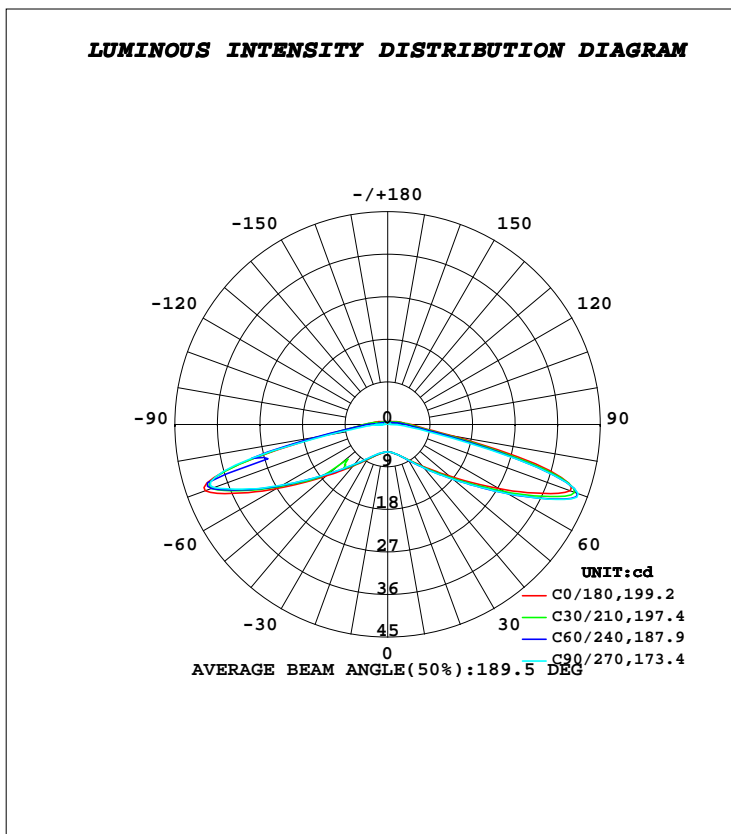


**LUMINAIRE PHOTOMETRIC TEST REPORT**

Test:U:12.000V I:0.0827A P:1.0000W PF:1.0000 Freq:0Hz		
Lamp Flux:123.74lx1 lm		
Name: UV3W	Type: LED	
MFR.:		

DATA OF LAMP		PHOTOMETRIC DATA Eff: 123.74 lm/W			
MODEL		I <sub>max</sub> (cd)	42.89	S/MH(C0/180)	3.96
NOMINAL POWER(W)	1	LOR(%)	100.0	S/MH(C90/270)	4.11
RATED VOLTAGE(V)	12	TOTAL FLUX(lm)	123.74	η UP, DN(C0-180)	3.4,47.3
NOMINAL FLUX(lm)	123.741	CIE CLASS	DIRECT	η UP, DN(C180-360)	3.4,45.8
LAMPS INSIDE	1	η up(%)	6.8	CIBSE SHR NOM	2.00
TEST VOLTAGE(V)	12	η down(%)	93.2	CIBSE SHR MAX	2.00



**C Range: 0 - 360DEG**  
**C Interval: 30.0DEG**  
**Test Speed: HIGH**  
**Temperature:25.3DEG**  
**Operators:DAMIN**  
**Test Date:2021-10-29**

**γ Range: 0 - 180DEG**  
**γ Interval: 1.0DEG**  
**Test System:SO-2000A\_V1 SYSTEM V2.00.443**  
**Humidity:65.0%**  
**Test Distance:8.000m [K=0.7063]**  
**Remarks:**

**ZONAL FLUX DIAGRAM**

**ZONAL FLUX DIAGRAM:**

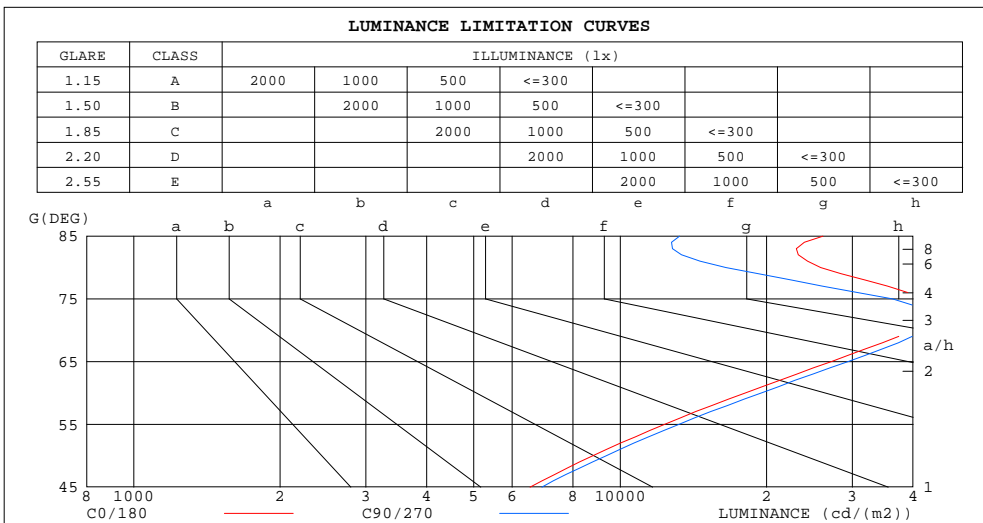
$\gamma$	C0	C45	C90	C135	C180	C225	C270	C315	$\gamma$	$\Phi$ zone	$\Phi$ total	%lum,lamp
10	6.104	6.105	6.105	6.105	6.104	6.080	6.047	6.080	0- 10	0.5686	0.5686	0.46,0.46
20	6.943	6.968	6.924	6.968	6.943	6.853	6.762	6.853	10- 20	1.839	2.408	1.95,1.95
30	8.603	8.718	8.710	8.718	8.603	8.408	8.252	8.408	20- 30	3.562	5.970	4.82,4.82
40	11.59	11.93	12.07	11.93	11.59	11.24	11.02	11.24	30- 40	6.271	12.24	9.89,9.89
50	16.94	17.78	18.08	17.78	16.94	14.69	16.15	14.69	40- 50	10.75	22.99	18.6,18.6
60	27.13	28.86	29.27	28.86	27.13	26.06	25.67	26.06	50- 60	19.52	42.51	34.4,34.4
70	41.07	42.40	42.85	42.40	41.07	39.66	39.05	39.66	60- 70	34.47	76.98	62.2,62.2
80	13.47	11.50	8.609	11.50	13.47	14.63	12.59	14.63	70- 80	30.88	107.9	87.2,87.2
90	4.988	4.217	1.938	4.217	4.988	4.712	2.363	4.712	80- 90	7.407	115.3	93.2,93.2
100	2.861	2.388	0.6214	2.388	2.861	2.266	0.6895	2.266	90-100	3.172	118.4	95.7,95.7
110	1.890	1.479	0.6313	1.479	1.890	1.431	0.6869	1.431	100-110	1.782	120.2	97.2,97.2
120	1.322	1.022	0.5885	1.022	1.322	1.020	0.6559	1.020	110-120	1.176	121.4	98.1,98.1
130	1.031	0.8150	0.5638	0.8150	1.031	0.8458	0.6165	0.8458	120-130	0.8030	122.2	98.8,98.8
140	0.8940	0.7089	0.5689	0.7089	0.8940	0.7645	0.6362	0.7645	130-140	0.6067	122.8	99.3,99.3
150	0.7327	0.5806	0.5451	0.5806	0.7327	0.6520	0.6305	0.6520	140-150	0.4344	123.2	99.6,99.6
160	0.5737	0.5528	0.5566	0.5528	0.5737	0.5970	0.5936	0.5970	150-160	0.2733	123.5	99.8,99.8
170	0.5860	0.5737	0.5755	0.5737	0.5860	0.5972	0.5935	0.5972	160-170	0.1638	123.7	100,100
180	0.5913	0.5973	0.5976	0.5973	0.5913	0.5968	0.5968	0.5968	170-180	0.0565	123.7	100,100
DEG	<b>LUMINOUS INTENSITY:cd</b>									<b>UNIT:lm</b>		

**C Range: 0 - 360DEG**  
**C Interval: 30.0DEG**  
**Test Speed: HIGH**  
**Temperature:25.3DEG**  
**Operators:DAMIN**  
**Test Date:2021-10-29**

**$\gamma$  Range: 0 - 180DEG**  
 **$\gamma$  Interval: 1.0DEG**  
**Test System:EO-2000A\_V1 SYSTEM V2.00.443**  
**Humidity:65.0%**  
**Test Distance:8.000m [K=0.7063]**  
**Remarks:**

**LUMINANCE LIMITATION CURVES**

Test:U:12.000V I:0.0827A P:1.0000W PF:1.0000 Freq:0Hz		
Lamp Flux:123.74lx1 lm		
Name: UV3W	Type: LED	
MFR.:		



LUMINANCE cd/(m2)		
G(DEG)	C0/180	C90/270
85	26114	13250
80	25851	16506
75	41676	36343
70	40013	41711
65	27142	29399
60	18079	19486
55	12343	13202
50	8782	9367
45	6525	6899

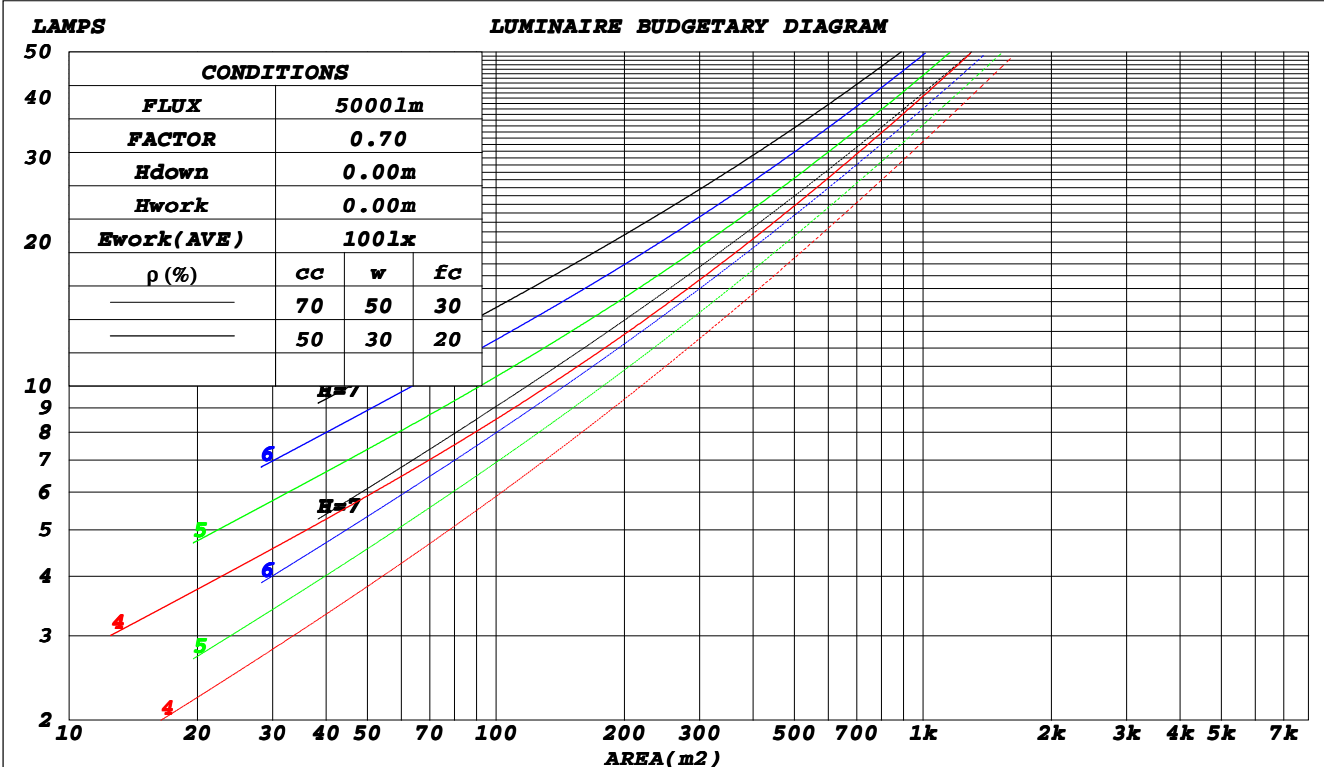
**C Range: 0 - 360DEG**  
**C Interval: 30.0DEG**  
**Test Speed: HIGH**  
**Temperature: 25.3DEG**  
**Operators: DAMIN**  
**Test Date: 2021-10-29**

**γ Range: 0 - 180DEG**  
**γ Interval: 1.0DEG**  
**Test System: GO-2000A\_V1 SYSTEM V2.00.443**  
**Humidity: 65.0%**  
**Test Distance: 8.000m [K=0.7063]**  
**Remarks:**

**CU AND LUMINAIRE BUDGETARY ESTIMATE DIAGRAM**

Test:U:12.000V I:0.0827A P:1.0000W PF:1.0000 Freq:0Hz		
Lamp Flux:123.74lx1 lm		
Name: UV3W	Type: LED	
MFR.:		

$\rho_{cc}$	80%			70%			50%			30%			10%			0
$\rho_w$	50%	30%	10%	50%	30%	10%	50%	30%	10%	50%	30%	10%	50%	30%	10%	0
$\rho_{fc}$	20%			20%			20%			20%			20%			0
<b>RCR</b>	<b>RCR:Room Cavity Ratio</b>						<b>Coefficients of Utilization(CU)</b>									
0.0	1.17	1.17	1.17	1.14	1.14	1.14	1.07	1.07	1.07	1.01	1.01	1.01	.96	.96	.96	.93
1.0	.93	.86	.80	.90	.83	.78	.84	.79	.74	.79	.74	.70	.74	.70	.67	.64
2.0	.74	.64	.55	.71	.62	.54	.66	.58	.51	.62	.55	.49	.57	.52	.47	.44
3.0	.60	.49	.40	.58	.47	.39	.54	.45	.37	.50	.42	.35	.46	.39	.34	.31
4.0	.51	.39	.30	.49	.38	.29	.45	.35	.28	.41	.33	.26	.38	.31	.25	.22
5.0	.43	.32	.23	.42	.31	.23	.39	.29	.22	.36	.27	.21	.33	.25	.20	.17
6.0	.38	.27	.18	.36	.26	.18	.34	.24	.17	.31	.23	.16	.29	.21	.16	.13
7.0	.33	.23	.15	.32	.22	.15	.30	.21	.14	.28	.20	.14	.26	.18	.13	.10
8.0	.30	.20	.13	.29	.19	.12	.27	.18	.12	.25	.17	.11	.23	.16	.11	.08
9.0	.27	.17	.11	.26	.17	.11	.24	.16	.10	.23	.15	.10	.21	.14	.09	.07
10.0	.25	.16	.09	.24	.15	.09	.22	.14	.09	.21	.14	.08	.20	.13	.08	.06



**C Range: 0 - 360DEG**  
**C Interval: 30.0DEG**  
**Test Speed: HIGH**  
**Temperature: 25.3DEG**  
**Operators: DAMIN**  
**Test Date: 2021-10-29**

**$\gamma$  Range: 0 - 180DEG**  
 **$\gamma$  Interval: 1.0DEG**  
**Test System: EO-2000A\_V1 SYSTEM V2.00.443**  
**Humidity: 65.0%**  
**Test Distance: 8.000m [K=0.7063]**  
**Remarks:**

**WEC AND CCEC**

Test:U:12.000V I:0.0827A P:1.0000W PF:1.0000 Freq:0Hz		
Lamp Flux:123.74lx1 lm		
Name: UV3W	Type: LED	
MFR.:		

$\rho_{cc}$	80%			70%			50%			30%			10%			0
$\rho_w$	50%	30%	10%	50%	30%	10%	50%	30%	10%	50%	30%	10%	50%	30%	10%	0
$\rho_{fc}$	20%			20%			20%			20%			20%			0
<b>RCR</b>	<b>RCR:Room Cavity Ratio</b>						<b>Wall Exitance Coefficients(WEC)</b>									
0.0																
1.0	.491	.279	.088	.481	.274	.087	.463	.266	.085	.447	.258	.083	.431	.250	.081	
2.0	.434	.238	.073	.425	.234	.072	.409	.227	.071	.394	.221	.069	.379	.215	.068	
3.0	.381	.203	.061	.373	.200	.060	.358	.194	.059	.344	.188	.058	.331	.183	.057	
4.0	.336	.174	.051	.328	.172	.051	.315	.167	.050	.302	.162	.049	.291	.158	.048	
5.0	.299	.152	.044	.292	.150	.044	.280	.146	.043	.269	.142	.042	.258	.138	.041	
6.0	.268	.134	.038	.262	.133	.038	.251	.129	.037	.241	.125	.037	.232	.122	.036	
7.0	.243	.120	.034	.238	.119	.034	.228	.115	.033	.219	.112	.033	.210	.109	.032	
8.0	.222	.108	.031	.217	.107	.030	.208	.104	.030	.200	.101	.029	.192	.099	.029	
9.0	.204	.099	.028	.200	.097	.027	.192	.095	.027	.184	.092	.026	.177	.090	.026	
10.0	.189	.091	.025	.185	.089	.025	.178	.087	.025	.171	.085	.024	.164	.083	.024	

$\rho_{cc}$	80%			70%			50%			30%			10%			0
$\rho_w$	50%	30%	10%	50%	30%	10%	50%	30%	10%	50%	30%	10%	50%	30%	10%	0
$\rho_{fc}$	20%			20%			20%			20%			20%			0
<b>RCR</b>	<b>RCR:Room Cavity Ratio</b>						<b>Ceiling Cavity Exitance Coefficients(CCEC)</b>									
0.0																
1.0	.243	.243	.243	.207	.207	.207	.142	.142	.142	.081	.081	.081	.026	.026	.026	
2.0	.244	.184	.134	.209	.159	.116	.143	.110	.081	.083	.064	.047	.027	.021	.015	
3.0	.239	.168	.112	.205	.145	.097	.141	.101	.068	.081	.059	.040	.026	.019	.013	
4.0	.232	.156	.099	.199	.135	.086	.137	.094	.060	.079	.055	.036	.025	.018	.012	
5.0	.223	.147	.091	.192	.127	.079	.132	.089	.056	.076	.052	.033	.025	.017	.011	
6.0	.215	.139	.085	.184	.121	.074	.127	.084	.052	.074	.050	.031	.024	.016	.010	
7.0	.206	.133	.081	.177	.115	.071	.122	.081	.050	.071	.047	.030	.023	.016	.010	
8.0	.198	.127	.078	.170	.110	.068	.118	.077	.048	.069	.046	.029	.022	.015	.010	
9.0	.190	.122	.076	.164	.106	.066	.114	.074	.047	.066	.044	.028	.021	.014	.009	
10.0	.183	.118	.074	.158	.102	.064	.110	.072	.046	.064	.042	.027	.021	.014	.009	

**C Range: 0 - 360DEG**  
**C Interval: 30.0DEG**  
**Test Speed: HIGH**  
**Temperature:25.3DEG**  
**Operators:DAMIN**  
**Test Date:2021-10-29**

**$\gamma$  Range: 0 - 180DEG**  
 **$\gamma$  Interval: 1.0DEG**  
**Test System:EO-2000A\_V1 SYSTEM V2.00.443**  
**Humidity:65.0%**  
**Test Distance:8.000m [K=0.7063]**  
**Remarks:**

**UGR(Unified Glare Rating) Table**

Test:U:12.000V I:0.0827A P:1.0000W PF:1.0000 Freq:0Hz		
Lamp Flux:123.74lx1 lm		
Name: UV3W	Type: LED	
MFR.:		

ceiling/cavity	0.7	0.7	0.5	0.5	0.3	0.7	0.7	0.5	0.5	0.3
walls	0.5	0.3	0.5	0.3	0.3	0.5	0.3	0.5	0.3	0.3
working plane	0.2	0.2	0.2	0.2	0.2	0.2	0.2	0.2	0.2	0.2
Room dimensions	Viewed crosswise					Viewed endwise				
<b>x = 2H y = 2H</b>	<b>23.2</b>	<b>25.0</b>	<b>23.6</b>	<b>25.4</b>	<b>25.8</b>	<b>23.5</b>	<b>25.4</b>	<b>23.9</b>	<b>25.7</b>	<b>26.1</b>
3H	28.4	30.2	28.9	30.6	31.0	28.7	30.5	29.2	30.9	31.3
4H	30.2	31.9	30.6	32.3	32.8	30.2	31.9	30.6	32.3	32.7
6H	30.8	32.4	31.2	32.8	33.3	30.4	32.0	30.9	32.5	33.0
8H	30.9	32.5	31.4	32.9	33.4	30.4	32.0	30.9	32.4	32.9
12H	31.0	32.5	31.4	32.9	33.4	30.4	31.9	30.9	32.4	32.9
<b>4H 2H</b>	<b>25.1</b>	<b>26.8</b>	<b>25.6</b>	<b>27.2</b>	<b>27.7</b>	<b>25.3</b>	<b>27.0</b>	<b>25.8</b>	<b>27.4</b>	<b>27.9</b>
3H	29.9	31.5	30.4	31.9	32.4	30.1	31.6	30.6	32.1	32.6
4H	31.6	33.0	32.1	33.4	34.0	31.5	32.9	31.9	33.3	33.8
6H	32.2	33.4	32.7	33.9	34.5	31.8	33.0	32.3	33.5	34.1
8H	32.3	33.5	32.8	34.0	34.6	31.8	33.0	32.3	33.5	34.1
12H	32.4	33.5	32.9	34.0	34.6	31.8	32.9	32.4	33.5	34.0
<b>8H 4H</b>	<b>32.0</b>	<b>33.1</b>	<b>32.5</b>	<b>33.7</b>	<b>34.2</b>	<b>31.8</b>	<b>33.0</b>	<b>32.4</b>	<b>33.6</b>	<b>34.1</b>
6H	32.6	33.6	33.2	34.2	34.8	32.3	33.3	32.8	33.8	34.4
8H	32.8	33.7	33.4	34.3	34.9	32.4	33.3	32.9	33.8	34.4
12H	33.0	33.8	33.6	34.4	35.0	32.4	33.2	33.0	33.8	34.4
<b>12H 4H</b>	<b>31.9</b>	<b>33.0</b>	<b>32.5</b>	<b>33.6</b>	<b>34.1</b>	<b>31.8</b>	<b>32.9</b>	<b>32.4</b>	<b>33.5</b>	<b>34.0</b>
6H	32.6	33.6	33.2	34.1	34.7	32.3	33.2	32.9	33.8	34.4
8H	32.9	33.7	33.5	34.2	34.9	32.4	33.2	33.0	33.8	34.4
<b>Variations with the observer position at spacings(CIE Pub.117):</b>										
<b>S = 1.0H</b>	<b>+ 0.0 / - 0.1</b>					<b>+ 0.1 / - 0.1</b>				
<b>1.5H</b>	<b>+ 0.1 / - 0.3</b>					<b>+ 0.2 / - 0.3</b>				
<b>2.0H</b>	<b>+ 0.3 / - 0.3</b>					<b>+ 0.5 / - 0.4</b>				

CIE Pub.117, 123.7 lm Total Lamp Luminous Flux Corrected (8log(F/F0) = -7.3)  
 Area: 0.003 m2

C Range: 0 - 360DEG  
 C Interval: 30.0DEG  
 Test Speed: HIGH  
 Temperature:25.3DEG  
 Operators:DAMIN  
 Test Date:2021-10-29

γ Range: 0 - 180DEG  
 γ Interval: 1.0DEG  
 Test System:EO-2000A\_V1 SYSTEM V2.00.443  
 Humidity:65.0%  
 Test Distance:8.000m [K=0.7063]  
 Remarks:

**UTILIZATION FACTORS TABLE**

Test:U:12.000V I:0.0827A P:1.0000W PF:1.0000 Freq:0Hz Lamp Flux:123.74lx1 lm		
Name: UV3W	Type: LED	
MFR.:		

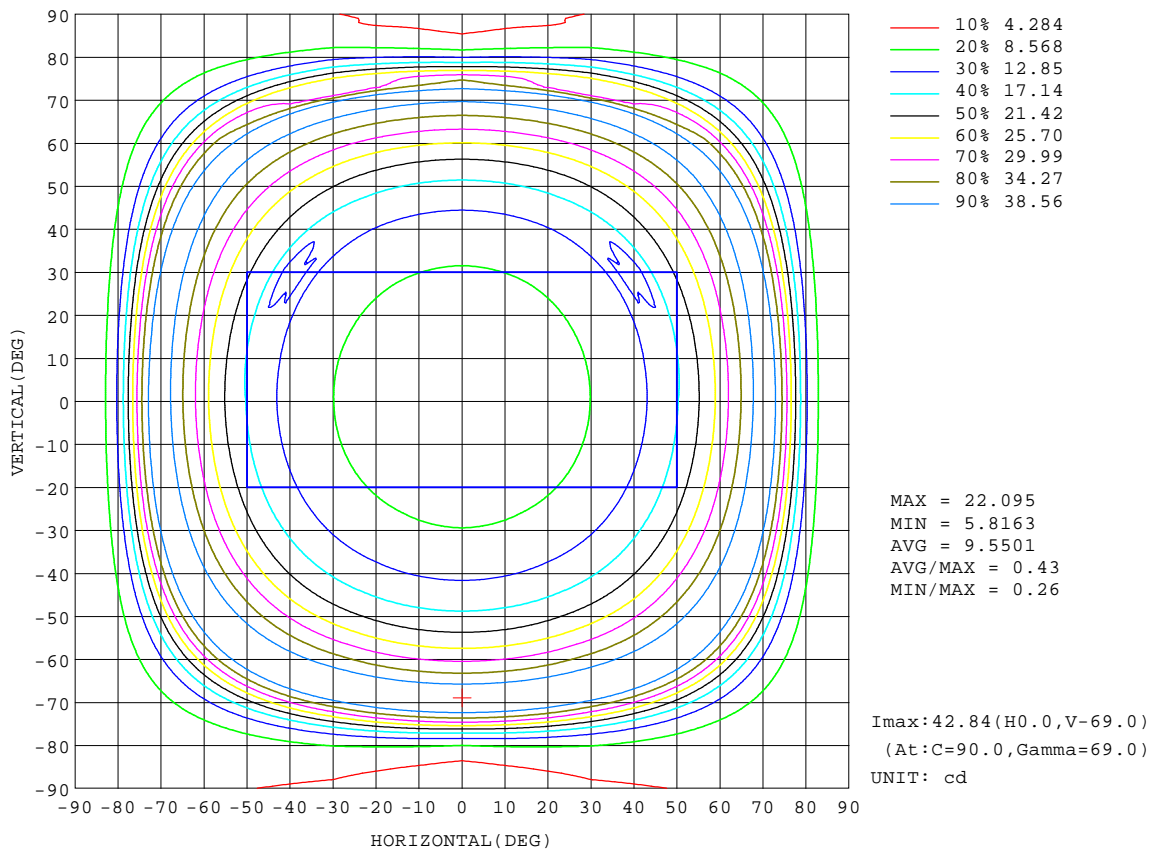
REFLECTANCE										
<b>Ceiling</b>	0.8	0.8	0.8	0.7	0.7	0.7	0.5	0.5	0.5	0
<b>Walls</b>	0.7	0.5	0.3	0.7	0.5	0.3	0.7	0.5	0.3	0
<b>Working plane</b>	0.2	0.2	0.2	0.2	0.2	0.2	0.2	0.2	0.2	0
<b>ROOM INDEX</b>	<b>UTILIZATION FACTORS(PERCENT) <math>k(RI) \times RCR = 5</math></b>									
<b>k = 0.60</b>	40	25	17	39	25	16	37	24	16	8
<b>0.80</b>	47	32	22	46	31	22	43	30	21	12
<b>1.00</b>	54	39	28	53	38	28	49	40	27	17
<b>1.25</b>	62	46	35	60	45	35	56	43	34	23
<b>1.50</b>	68	53	42	66	51	41	61	49	40	28
<b>2.00</b>	77	63	53	75	62	52	69	59	50	38
<b>2.50</b>	84	71	61	81	69	60	75	66	58	45
<b>3.00</b>	89	77	68	86	75	67	80	71	64	52
<b>4.00</b>	95	86	78	92	84	77	86	79	73	61
<b>5.00</b>	100	92	85	96	89	83	90	84	79	67
<b>ROOM INDEX</b>	<b>UF(total)</b>									<b>Direct</b>
<b>According to DIN EN 13032-2 2004</b>			<b>Suspended</b>				<b>SHRNOM = 1.25</b>			

**C Range: 0 - 360DEG**  
**C Interval: 30.0DEG**  
**Test Speed: HIGH**  
**Temperature:25.3DEG**  
**Operators:DAMIN**  
**Test Date:2021-10-29**

**$\gamma$  Range: 0 - 180DEG**  
 **$\gamma$  Interval: 1.0DEG**  
**Test System:SO-2000A\_V1 SYSTEM V2.00.443**  
**Humidity:65.0%**  
**Test Distance:8.000m [K=0.7063]**  
**Remarks:**

**ISOCANDELA DIAGRAM**

Test:U:12.000V I:0.0827A P:1.0000W PF:1.0000 Freq:0Hz		
Lamp Flux:123.74lx1 lm		
Name: UV3W	Type: LED	
MFR.:		



**C Range: 0 - 360DEG**  
**C Interval: 30.0DEG**  
**Test Speed: HIGH**  
**Temperature: 25.3DEG**  
**Operators: DAMIN**  
**Test Date: 2021-10-29**

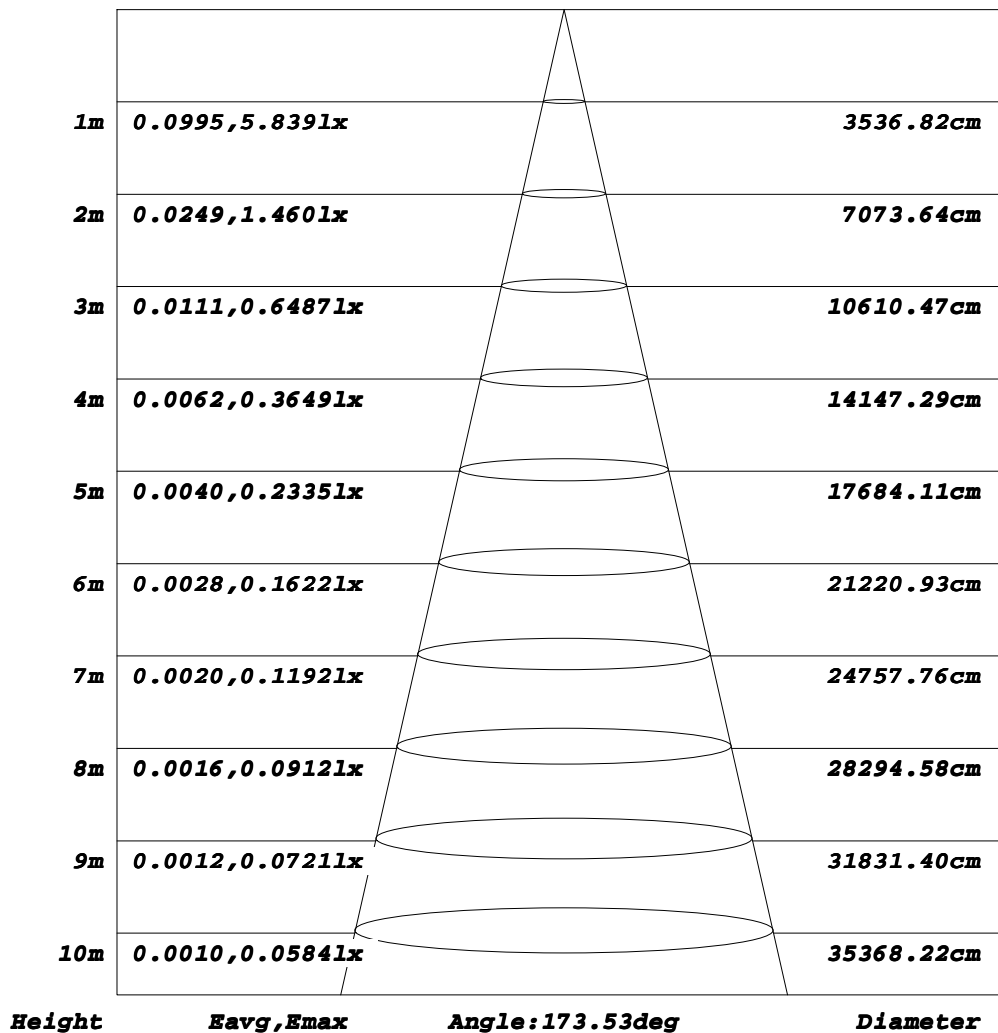
**γ Range: 0 - 180DEG**  
**γ Interval: 1.0DEG**  
**Test System: EO-2000A\_V1 SYSTEM V2.00.443**  
**Humidity: 65.0%**  
**Test Distance: 8.000m [K=0.7063]**  
**Remarks:**



**AAI Figure**

Test:U:12.000V I:0.0827A P:1.0000W PF:1.0000 Freq:0Hz		
Lamp Flux:123.74lx1 lm		
Name: UV3W	Type: LED	
MFR.:		

**Flux out:113.8 lm**



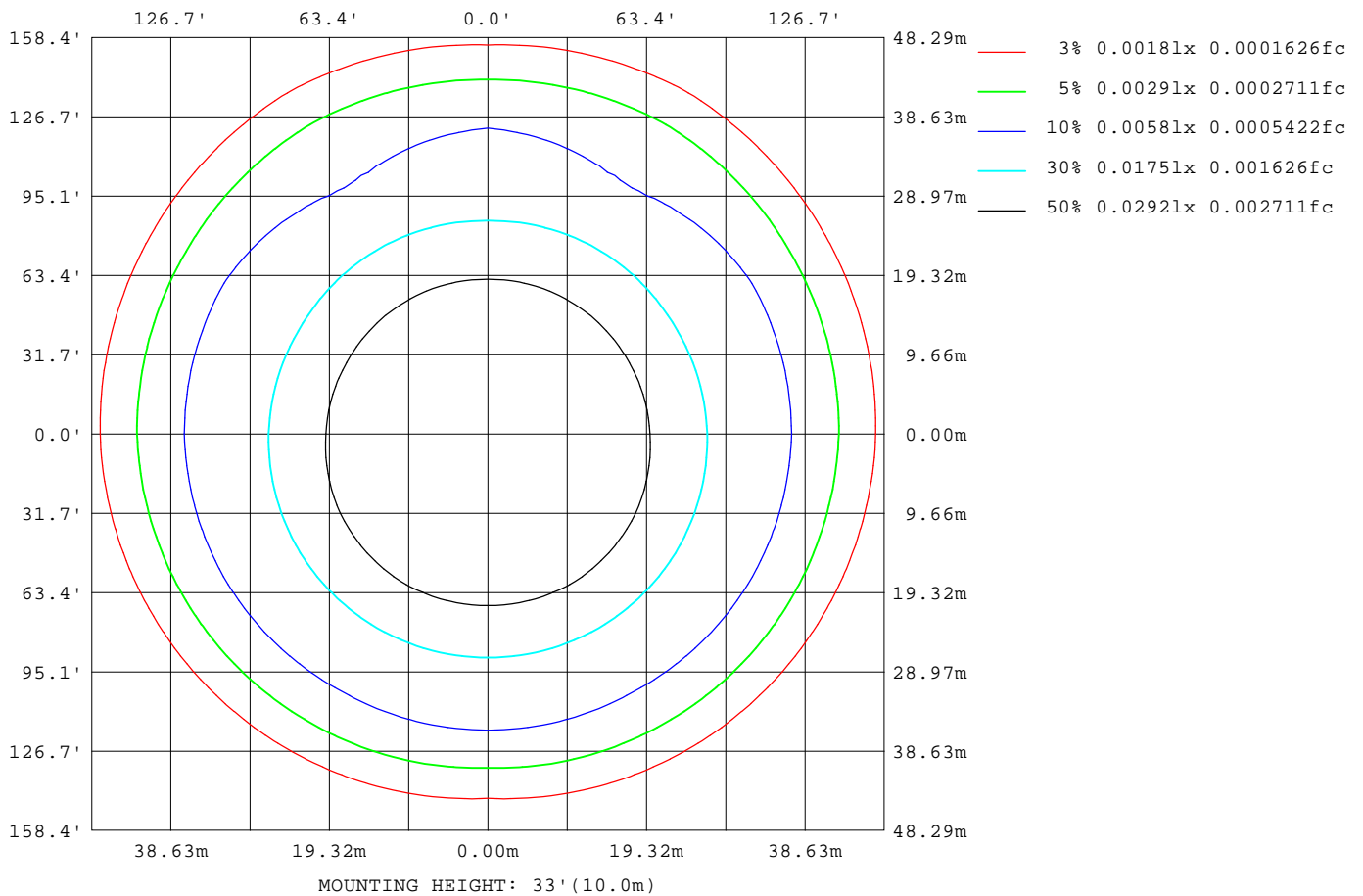
Note: The Curves indicate the illuminated area and the average illumination when the luminaire is at different distance.

**C Range: 0 - 360DEG**  
**C Interval: 30.0DEG**  
**Test Speed: HIGH**  
**Temperature: 25.3DEG**  
**Operators: DAMIN**  
**Test Date: 2021-10-29**

**γ Range: 0 - 180DEG**  
**γ Interval: 1.0DEG**  
**Test System: EO-2000A\_V1 SYSTEM V2.00.443**  
**Humidity: 65.0%**  
**Test Distance: 8.000m [K=0.7063]**  
**Remarks:**

**ISOLUX DIAGRAM**

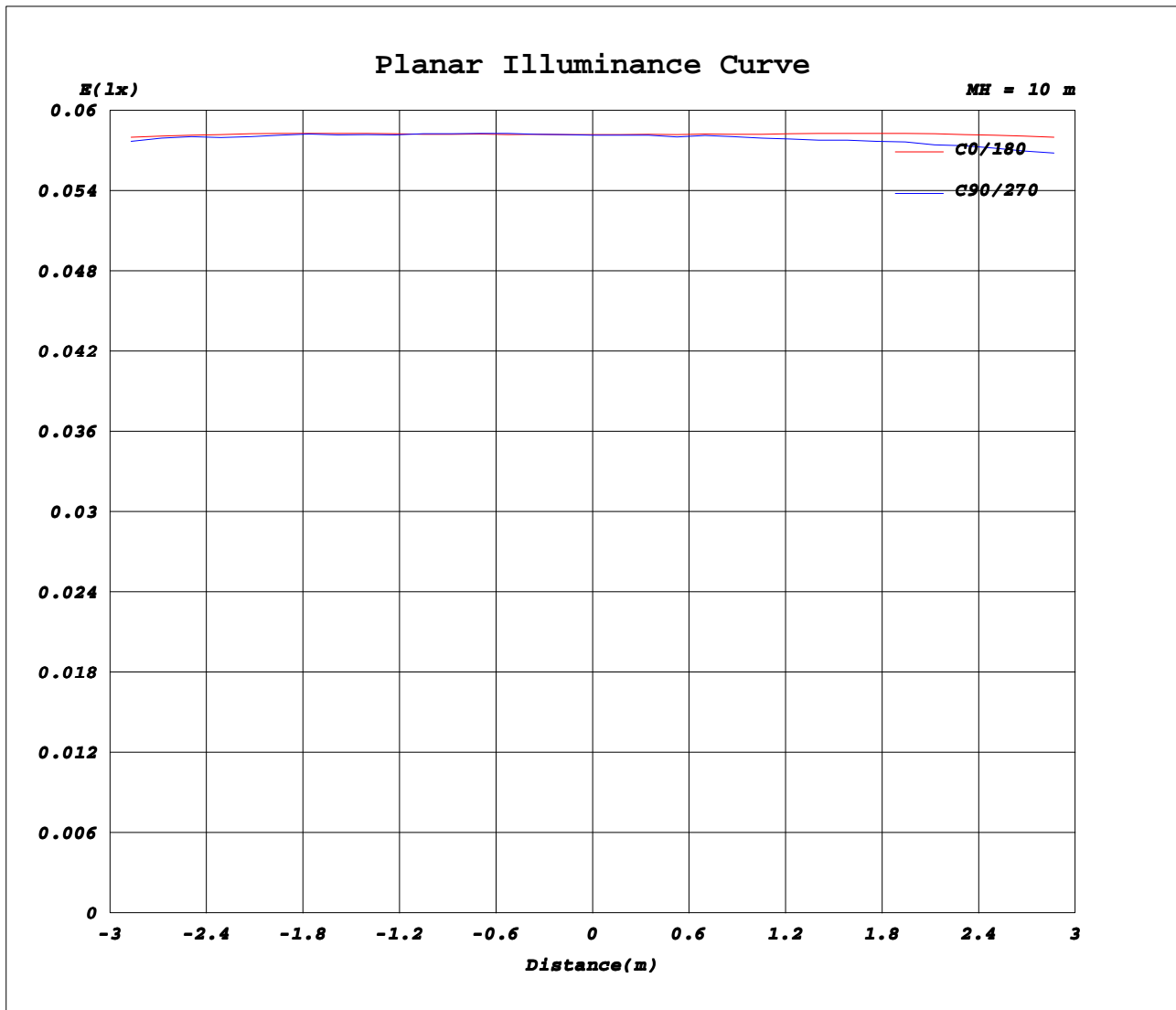
Test:U:12.000V I:0.0827A P:1.0000W PF:1.0000 Freq:0Hz		
Lamp Flux:123.74lx1 lm		
Name: UV3W	Type: LED	
MFR.:		



**C Range: 0 - 360DEG**  
**C Interval: 30.0DEG**  
**Test Speed: HIGH**  
**Temperature: 25.3DEG**  
**Operators: DAMIN**  
**Test Date: 2021-10-29**

**γ Range: 0 - 180DEG**  
**γ Interval: 1.0DEG**  
**Test System: EO-2000A\_V1 SYSTEM V2.00.443**  
**Humidity: 65.0%**  
**Test Distance: 8.000m [K=0.7063]**  
**Remarks:**

**Planar Illuminance Curve**



**C Range: 0 - 360DEG**  
**C Interval: 30.0DEG**  
**Test Speed: HIGH**  
**Temperature: 25.3DEG**  
**Operators: DAMIN**  
**Test Date: 2021-10-29**

**γ Range: 0 - 180DEG**  
**γ Interval: 1.0DEG**  
**Test System: EO-2000A\_V1 SYSTEM V2.00.443**  
**Humidity: 65.0%**  
**Test Distance: 8.000m [K=0.7063]**  
**Remarks:**

**LUMINOUS DISTRIBUTION INTENSITY DATA**

Test:U:12.000V I:0.0827A P:1.0000W PF:1.0000 Freq:0Hz		
Lamp Flux:123.74lx1 lm		
Name: UV3W	Type: LED	
MFR.:		

Table--1

UNIT: cd

C(DEG) γ (DEG)	0	30	60	90	120	150	180	210	240	270	300	330						
0	5.82	5.82	5.82	5.82	5.82	5.82	5.82	5.82	5.82	5.82	5.82	5.82						
5	5.89	5.89	5.90	5.90	5.90	5.89	5.89	5.89	5.88	5.88	5.88	5.89						
10	6.10	6.10	6.11	6.11	6.11	6.10	6.10	6.10	6.06	6.05	6.06	6.10						
15	6.45	6.45	6.46	6.44	6.46	6.45	6.45	6.42	6.35	6.33	6.35	6.42						
20	6.94	6.96	6.97	6.92	6.97	6.96	6.94	6.90	6.80	6.76	6.80	6.90						
25	7.66	7.69	7.72	7.66	7.72	7.69	7.66	7.57	7.44	7.38	7.44	7.57						
30	8.60	8.67	8.77	8.71	8.77	8.67	8.60	8.49	8.32	8.25	8.32	8.49						
35	9.87	9.99	10.2	10.1	10.2	9.99	9.87	9.72	9.51	9.43	9.51	9.72						
40	11.6	11.8	12.1	12.1	12.1	11.8	11.6	11.4	11.1	11.0	11.1	11.4						
45	13.8	14.2	14.6	14.7	14.6	14.2	13.8	13.5	13.2	13.2	13.2	13.5						
50	16.9	17.5	18.1	18.1	18.1	17.5	16.9	13.2	16.1	16.1	16.1	13.2						
55	21.2	22.1	22.7	22.7	22.7	22.1	21.2	20.8	20.3	20.2	20.3	20.8						
60	27.1	28.4	29.3	29.3	29.3	28.4	27.1	26.3	25.8	25.7	25.8	26.3						
65	34.4	36.0	37.2	37.3	37.2	36.0	34.4	33.1	32.7	32.3	32.7	33.1						
70	41.1	42.1	42.7	42.9	42.7	42.1	41.1	39.7	39.7	39.0	39.7	39.7						
75	32.4	30.6	28.3	28.3	28.3	30.6	32.4	32.5	27.1	33.4	27.1	32.5						
80	13.5	12.2	10.8	8.61	10.8	12.2	13.5	14.3	15.0	12.6	15.0	14.3						
85	6.83	6.18	5.51	3.47	5.51	6.18	6.83	6.94	6.74	4.53	6.74	6.94						
90	4.99	4.59	3.84	1.94	3.84	4.59	4.99	5.03	4.40	2.36	4.40	5.03						
95	3.63	3.41	2.83	0.59	2.83	3.41	3.63	3.72	2.30	0.66	2.30	3.72						
100	2.86	2.68	2.09	0.62	2.09	2.68	2.86	2.70	1.83	0.69	1.83	2.70						
105	2.30	2.15	1.55	0.63	1.55	2.15	2.30	1.64	1.48	0.69	1.48	1.64						
110	1.89	1.74	1.22	0.63	1.22	1.74	1.89	1.51	1.35	0.69	1.35	1.51						
115	1.56	1.42	1.01	0.61	1.01	1.42	1.56	1.32	1.10	0.68	1.10	1.32						
120	1.32	1.20	0.84	0.59	0.84	1.20	1.32	1.14	0.90	0.66	0.90	1.14						
125	1.15	1.05	0.75	0.57	0.75	1.05	1.15	0.99	0.79	0.63	0.79	0.99						
130	1.03	0.93	0.70	0.56	0.70	0.93	1.03	0.97	0.72	0.62	0.72	0.97						
135	0.96	0.86	0.66	0.57	0.66	0.86	0.96	0.92	0.70	0.62	0.70	0.92						
140	0.89	0.80	0.61	0.57	0.61	0.80	0.89	0.86	0.67	0.64	0.67	0.86						
145	0.83	0.74	0.57	0.56	0.57	0.74	0.83	0.78	0.64	0.64	0.64	0.78						
150	0.73	0.61	0.55	0.55	0.55	0.61	0.73	0.68	0.63	0.63	0.63	0.68						
155	0.58	0.56	0.55	0.54	0.55	0.56	0.58	0.62	0.61	0.61	0.61	0.62						
160	0.57	0.55	0.55	0.56	0.55	0.55	0.57	0.60	0.60	0.59	0.60	0.60						
165	0.58	0.56	0.57	0.57	0.57	0.56	0.58	0.59	0.59	0.59	0.59	0.59						
170	0.59	0.57	0.57	0.58	0.57	0.57	0.59	0.60	0.60	0.59	0.60	0.60						
175	0.59	0.59	0.59	0.59	0.59	0.59	0.59	0.60	0.61	0.61	0.61	0.60						
180	0.59	0.60	0.60	0.60	0.60	0.60	0.59	0.60	0.60	0.60	0.60	0.60						

**C Range: 0 - 360DEG**  
**C Interval: 30.0DEG**  
**Test Speed: HIGH**  
**Temperature:25.3DEG**  
**Operators:DAMIN**  
**Test Date:2021-10-29**

**γ Range: 0 - 180DEG**  
**γ Interval: 1.0DEG**  
**Test System:EO-2000A\_V1 SYSTEM V2.00.443**  
**Humidity:65.0%**  
**Test Distance:8.000m [K=0.7063]**  
**Remarks:**