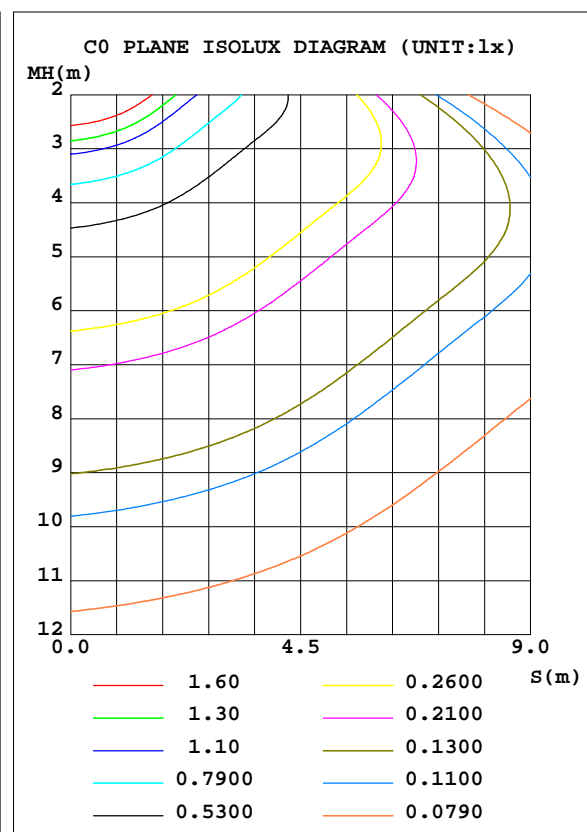
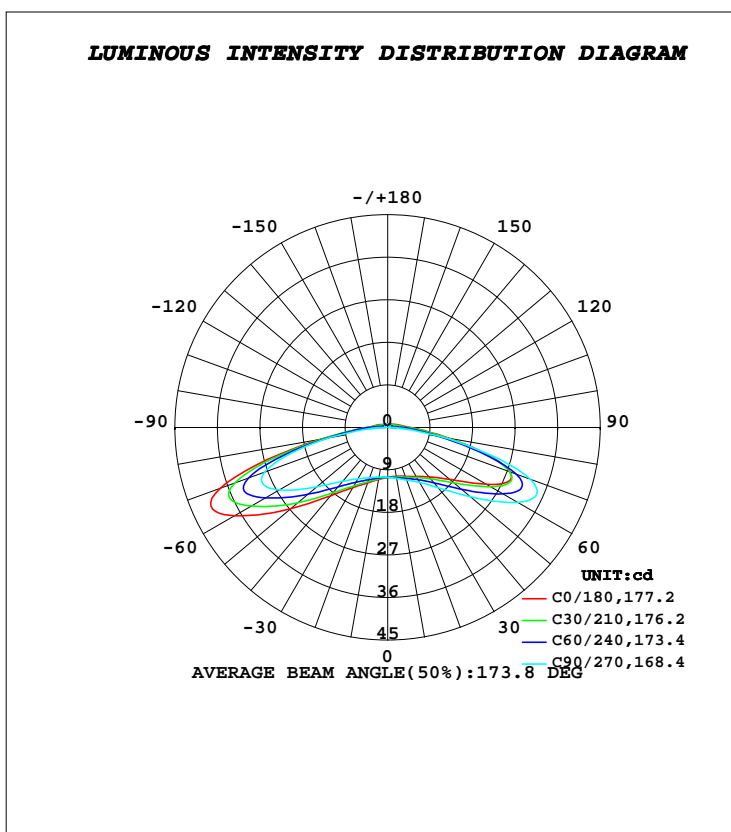


LUMINAIRE PHOTOMETRIC TEST REPORT

Test:U:12.000V I:0.1240A P:1.5000W PF:1.0000 Freq:0Hz		
Lamp Flux:126.881x1 lm		
Name: WV3W	Type: LED	
MFR.:		

DATA OF LAMP		PHOTOMETRIC DATA				Eff: 84.59 lm/W
MODEL		I _{max} (cd)	40.96	S/MH(C0/180)	2.03	
NOMINAL POWER(W)	1.5	LOR(%)	100.0	S/MH(C90/270)	2.78	
RATED VOLTAGE(V)	12	TOTAL FLUX(lm)	126.88	η UP, DN(C0-180)	3.1, 47.0	
NOMINAL FLUX(lm)	126.881	CIE CLASS	DIRECT	η UP, DN(C180-360)	3.1, 46.8	
LAMPS INSIDE	1	η up(%)	6.2	CIBSE SHR NOM	2.00	
TEST VOLTAGE(V)	12	η down(%)	93.8	CIBSE SHR MAX	2.00	



C Range: 0 - 360DEG
C Interval: 30.0DEG
Test Speed: HIGH
Temperature: 25.3DEG
Operators: DAMIN
Test Date: 2021-10-29

γ Range: 0 - 180DEG
γ Interval: 1.0DEG
Test System: EO-2000A_V1 SYSTEM V2.00.443
Humidity: 65.0%
Test Distance: 8.000m [K=0.7063]
Remarks:

ZONAL FLUX DIAGRAM

ZONAL FLUX DIAGRAM:

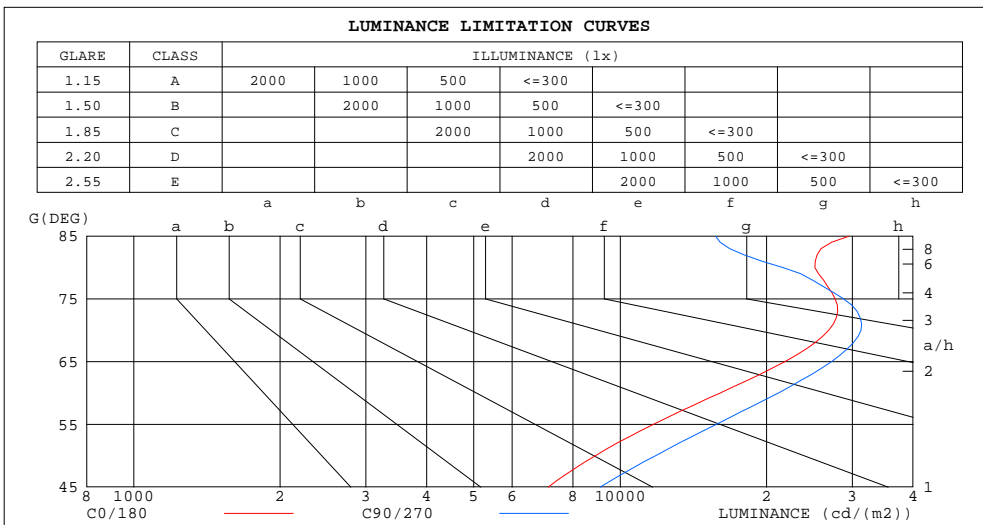
γ	C0	C45	C90	C135	C180	C225	C270	C315	γ	Φ zone	Φ total	%lum,lamp
10	10.51	10.71	10.95	11.15	11.19	10.97	10.68	10.52	0- 10	1.021	1.021	0.80,0.80
20	11.02	11.36	11.86	12.35	12.50	12.01	11.34	11.02	10- 20	3.191	4.212	3.32,3.32
30	11.99	12.51	13.43	14.43	14.70	13.83	12.54	12.00	20- 30	5.744	9.956	7.85,7.85
40	13.69	14.78	16.67	18.58	18.92	17.26	14.89	13.80	30- 40	9.124	19.08	15,15
50	17.12	19.30	22.80	26.21	26.65	23.39	19.54	17.59	40- 50	14.45	33.53	26.4,26.4
60	24.07	26.63	31.73	35.88	37.36	31.54	26.47	24.32	50- 60	23.00	56.53	44.6,44.6
70	27.52	28.21	32.12	34.20	37.70	32.90	27.74	26.05	60- 70	31.51	88.05	69.4,69.4
80	13.09	11.90	11.27	12.53	14.23	13.39	12.40	12.64	70- 80	23.30	111.4	87.8,87.8
90	4.924	4.008	1.335	3.819	4.485	4.195	1.617	3.303	80- 90	7.657	119.0	93.8,93.8
100	2.779	1.892	0.5915	1.831	2.625	1.925	0.6595	1.367	90-100	2.640	121.6	95.9,95.9
110	1.930	1.315	0.6227	1.266	1.842	1.317	0.6859	1.397	100-110	1.547	123.2	97.1,97.1
120	1.403	1.044	0.6227	0.9581	1.303	1.016	0.6875	1.125	110-120	1.146	124.3	98,98
130	1.145	0.9035	0.6210	0.8254	1.061	0.8793	0.6760	0.9745	120-130	0.8514	125.2	98.7,98.7
140	0.9069	0.7836	0.6301	0.7347	0.9665	0.7878	0.6998	0.8603	130-140	0.6533	125.8	99.2,99.2
150	0.7140	0.6711	0.6342	0.6289	0.7287	0.7110	0.7097	0.7366	140-150	0.4659	126.3	99.6,99.6
160	0.6840	0.6703	0.6473	0.6277	0.6627	0.6748	0.6900	0.7063	150-160	0.3126	126.6	99.8,99.8
170	0.6905	0.6818	0.6728	0.6633	0.6791	0.6814	0.6883	0.6957	160-170	0.1911	126.8	99.9,99.9
180	0.6848	0.6855	0.6867	0.6866	0.6857	0.6855	0.6875	0.6846	170-180	0.0654	126.9	100,100
DEG	LUMINOUS INTENSITY:cd									UNIT:lm		

C Range: 0 - 360DEG
C Interval: 30.0DEG
Test Speed: HIGH
Temperature:25.3DEG
Operators:DAMIN
Test Date:2021-10-29

γ Range: 0 - 180DEG
 γ Interval: 1.0DEG
Test System:EO-2000A_V1 SYSTEM V2.00.443
Humidity:65.0%
Test Distance:8.000m [K=0.7063]
Remarks:

LUMINANCE LIMITATION CURVES

Test:U:12.000V I:0.1240A P:1.5000W PF:1.0000 Freq:0Hz		
Lamp Flux:126.88lx1 lm		
Name: WV3W	Type: LED	
MFR.:		



LUMINANCE cd/(m2)		
G(DEG)	C0/180	C90/270
85	29529	15715
80	25145	21619
75	27645	28832
70	26841	31282
65	21817	27191
60	16058	21140
55	11706	15774
50	8886	11817
45	7115	9096

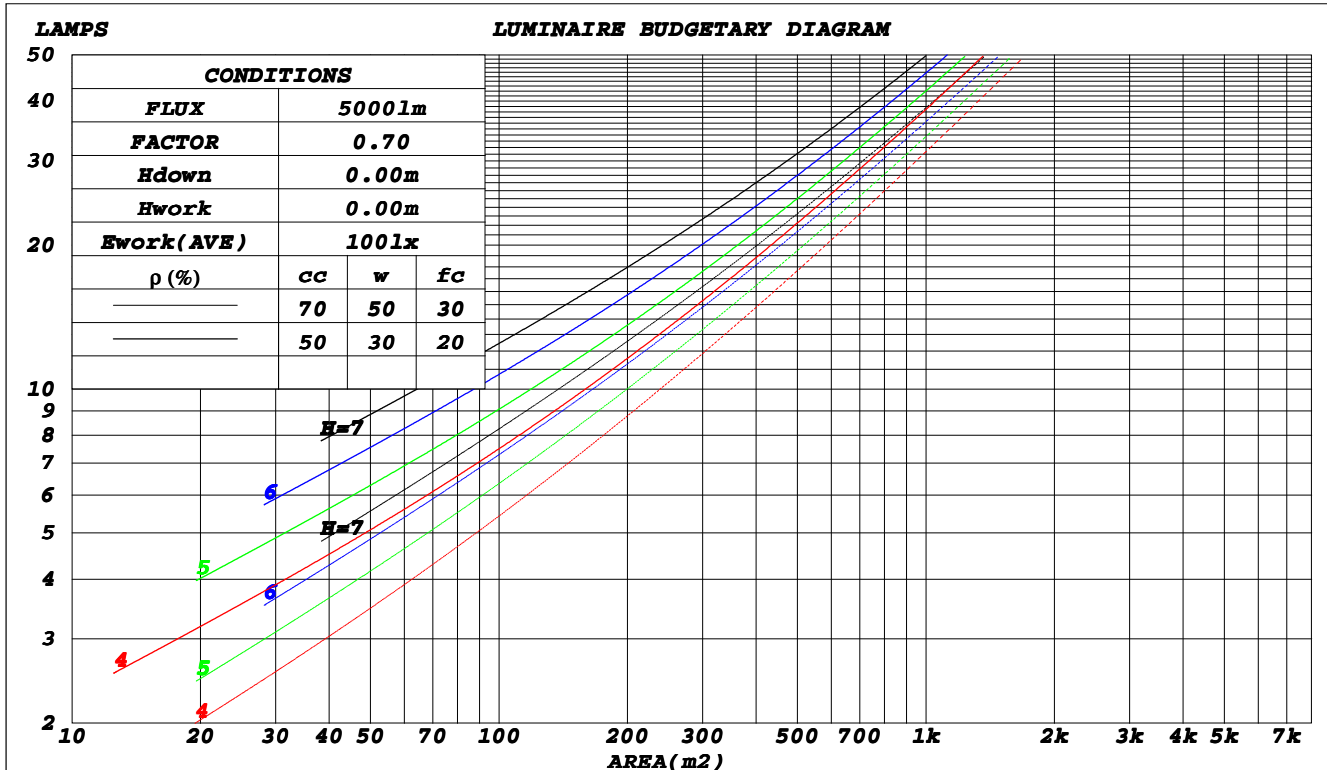
C Range: 0 - 360DEG
C Interval: 30.0DEG
Test Speed: HIGH
Temperature: 25.3DEG
Operators: DAMIN
Test Date: 2021-10-29

γ Range: 0 - 180DEG
γ Interval: 1.0DEG
Test System: SO-2000A_V1 SYSTEM V2.00.443
Humidity: 65.0%
Test Distance: 8.000m [K=0.7063]
Remarks:

CU AND LUMINAIRE BUDGETARY ESTIMATE DIAGRAM

Test:U:12.000V I:0.1240A P:1.5000W PF:1.0000 Freq:0Hz		
Lamp Flux:126.88lx1 lm		
Name: WV3W	Type: LED	
MFR.:		

ρ_{cc}	80%			70%			50%			30%			10%			0
ρ_w	50%	30%	10%	50%	30%	10%	50%	30%	10%	50%	30%	10%	50%	30%	10%	0
ρ_{fc}	20%			20%			20%			20%			20%			0
RCR	RCR:Room Cavity Ratio						Coefficients of Utilization(CU)									
0.0	1.18	1.18	1.18	1.14	1.14	1.14	1.08	1.08	1.08	1.02	1.02	1.02	.96	.96	.96	.94
1.0	.95	.89	.83	.92	.86	.81	.86	.82	.77	.81	.77	.74	.76	.73	.70	.67
2.0	.77	.68	.60	.75	.66	.59	.70	.63	.56	.65	.59	.54	.61	.56	.52	.49
3.0	.64	.53	.45	.62	.52	.44	.58	.49	.42	.54	.47	.41	.50	.44	.39	.36
4.0	.55	.43	.35	.53	.42	.34	.49	.40	.33	.46	.38	.32	.43	.36	.30	.27
5.0	.47	.36	.28	.45	.35	.27	.42	.33	.26	.40	.31	.25	.37	.30	.24	.22
6.0	.41	.30	.23	.40	.30	.22	.37	.28	.21	.35	.27	.21	.32	.25	.20	.17
7.0	.37	.26	.19	.35	.26	.19	.33	.24	.18	.31	.23	.17	.29	.22	.17	.14
8.0	.33	.23	.16	.32	.22	.16	.30	.21	.15	.28	.20	.15	.26	.19	.14	.12
9.0	.30	.20	.14	.29	.20	.14	.27	.19	.13	.25	.18	.13	.24	.17	.12	.10
10.0	.27	.18	.12	.26	.18	.12	.25	.17	.12	.23	.16	.11	.22	.16	.11	.09



C Range: 0 - 360DEG
 C Interval: 30.0DEG
 Test Speed: HIGH
 Temperature: 25.3DEG
 Operators: DAMIN
 Test Date: 2021-10-29

γ Range: 0 - 180DEG
 γ Interval: 1.0DEG
 Test System: EO-2000A_V1 SYSTEM V2.00.443
 Humidity: 65.0%
 Test Distance: 8.000m [K=0.7063]
 Remarks:

WEC AND CCEC

Test:U:12.000V I:0.1240A P:1.5000W PF:1.0000 Freq:0Hz		
Lamp Flux:126.88lx1 lm		
Name: WV3W	Type: LED	
MFR.:		

ρ_{cc}	80%			70%			50%			30%			10%			0
ρ_w	50%	30%	10%	50%	30%	10%	50%	30%	10%	50%	30%	10%	50%	30%	10%	0
ρ_{fc}	20%			20%			20%			20%			20%			0
RCR	RCR:Room Cavity Ratio						Wall Exitance Coefficients(WEC)									
0.0																
1.0	.453	.257	.082	.443	.253	.080	.426	.244	.078	.410	.236	.076	.395	.229	.074	
2.0	.403	.221	.068	.394	.217	.067	.378	.210	.065	.364	.204	.064	.350	.198	.062	
3.0	.357	.190	.057	.349	.187	.056	.335	.181	.055	.321	.176	.054	.309	.171	.053	
4.0	.318	.165	.049	.311	.163	.048	.298	.158	.047	.286	.153	.046	.274	.149	.045	
5.0	.285	.145	.042	.279	.143	.042	.267	.139	.041	.256	.135	.040	.246	.132	.040	
6.0	.258	.129	.037	.252	.127	.037	.242	.124	.036	.232	.121	.035	.223	.117	.035	
7.0	.235	.116	.033	.230	.115	.033	.221	.111	.032	.212	.109	.032	.203	.106	.031	
8.0	.216	.105	.030	.211	.104	.029	.203	.101	.029	.195	.099	.028	.187	.096	.028	
9.0	.199	.096	.027	.195	.095	.027	.187	.093	.026	.180	.090	.026	.173	.088	.025	
10.0	.185	.089	.025	.181	.087	.024	.174	.085	.024	.167	.083	.024	.161	.081	.023	

ρ_{cc}	80%			70%			50%			30%			10%			0
ρ_w	50%	30%	10%	50%	30%	10%	50%	30%	10%	50%	30%	10%	50%	30%	10%	0
ρ_{fc}	20%			20%			20%			20%			20%			0
RCR	RCR:Room Cavity Ratio						Ceiling Cavity Exitance Coefficients(CCEC)									
0.0																
1.0	.238	.238	.238	.203	.203	.203	.139	.139	.139	.080	.080	.080	.025	.025	.025	
2.0	.235	.179	.133	.201	.154	.115	.138	.107	.080	.080	.062	.047	.026	.020	.015	
3.0	.229	.163	.110	.197	.141	.096	.135	.098	.067	.078	.057	.040	.025	.019	.013	
4.0	.222	.151	.097	.191	.130	.084	.131	.091	.059	.076	.053	.035	.024	.017	.011	
5.0	.214	.141	.088	.184	.122	.076	.127	.085	.054	.073	.050	.032	.024	.016	.011	
6.0	.206	.134	.082	.177	.116	.071	.122	.081	.050	.071	.048	.030	.023	.016	.010	
7.0	.198	.127	.077	.170	.110	.067	.118	.077	.048	.068	.045	.028	.022	.015	.009	
8.0	.190	.121	.074	.164	.105	.064	.113	.074	.046	.066	.044	.027	.021	.014	.009	
9.0	.183	.116	.071	.158	.101	.062	.109	.071	.044	.064	.042	.026	.021	.014	.009	
10.0	.176	.112	.069	.152	.097	.060	.105	.068	.043	.061	.040	.026	.020	.013	.008	

C Range: 0 - 360DEG
C Interval: 30.0DEG
Test Speed: HIGH
Temperature:25.3DEG
Operators:DAMIN
Test Date:2021-10-29

γ Range: 0 - 180DEG
 γ Interval: 1.0DEG
Test System:SO-2000A_V1 SYSTEM V2.00.443
Humidity:65.0%
Test Distance:8.000m [K=0.7063]
Remarks:

UGR(Unified Glare Rating) Table

Test:U:12.000V I:0.1240A P:1.5000W PF:1.0000 Freq:0Hz		
Lamp Flux:126.88lx1 lm		
Name: WV3W	Type: LED	
MFR.:		

ceiling/cavity	0.7	0.7	0.5	0.5	0.3	0.7	0.7	0.5	0.5	0.3
walls	0.5	0.3	0.5	0.3	0.3	0.5	0.3	0.5	0.3	0.3
working plane	0.2	0.2	0.2	0.2	0.2	0.2	0.2	0.2	0.2	0.2
Room dimensions	Viewed crosswise					Viewed endwise				
x = 2H y = 2H	22.3	24.1	22.7	24.4	24.8	23.5	25.3	23.9	25.6	26.0
3H	26.3	28.0	26.7	28.3	28.7	27.3	29.0	27.7	29.4	29.8
4H	27.7	29.3	28.1	29.7	30.2	28.5	30.1	28.9	30.5	30.9
6H	28.6	30.1	29.0	30.5	31.0	29.1	30.6	29.5	31.0	31.5
8H	28.9	30.4	29.4	30.8	31.3	29.2	30.7	29.7	31.1	31.6
12H	29.2	30.6	29.6	31.0	31.5	29.3	30.7	29.7	31.1	31.6
4H 2H	23.9	25.5	24.3	25.9	26.3	24.6	26.3	25.1	26.7	27.1
3H	27.6	29.0	28.1	29.5	29.9	28.3	29.8	28.8	30.2	30.7
4H	29.0	30.4	29.5	30.8	31.3	29.6	30.9	30.1	31.4	31.8
6H	30.0	31.2	30.5	31.7	32.2	30.3	31.4	30.8	31.9	32.4
8H	30.3	31.5	30.9	32.0	32.5	30.4	31.5	30.9	32.0	32.6
12H	30.7	31.7	31.2	32.2	32.8	30.5	31.5	31.0	32.1	32.6
8H 4H	29.5	30.6	30.0	31.1	31.7	29.9	31.0	30.4	31.5	32.1
6H	30.6	31.6	31.2	32.1	32.7	30.7	31.7	31.3	32.2	32.8
8H	31.1	31.9	31.6	32.5	33.1	31.0	31.8	31.6	32.4	33.0
12H	31.5	32.3	32.1	32.8	33.4	31.2	31.9	31.8	32.5	33.1
12H 4H	29.5	30.6	30.1	31.1	31.6	30.0	31.0	30.5	31.5	32.1
6H	30.7	31.5	31.2	32.1	32.7	30.8	31.7	31.4	32.2	32.8
8H	31.2	31.9	31.8	32.5	33.1	31.1	31.9	31.7	32.4	33.0
Variations with the observer position at spacings(CIE Pub.117):										
S = 1.0H	+ 0.1 / - 0.1					+ 0.0 / - 0.1				
1.5H	+ 0.1 / - 0.2					+ 0.1 / - 0.1				
2.0H	+ 0.2 / - 0.3					+ 0.2 / - 0.3				

CIE Pub.117, 126.9 lm Total Lamp Luminous Flux Corrected (8log(F/F0) = -7.2)
 Area: 0.003 m2

C Range: 0 - 360DEG
 C Interval: 30.0DEG
 Test Speed: HIGH
 Temperature:25.3DEG
 Operators:DAMIN
 Test Date:2021-10-29

γ Range: 0 - 180DEG
 γ Interval: 1.0DEG
 Test System:EO-2000A_V1 SYSTEM V2.00.443
 Humidity:65.0%
 Test Distance:8.000m [K=0.7063]
 Remarks:

UTILIZATION FACTORS TABLE

Test:U:12.000V I:0.1240A P:1.5000W PF:1.0000 Freq:0Hz		
Lamp Flux:126.881x1 lm		
Name: WV3W	Type: LED	
MFR.:		

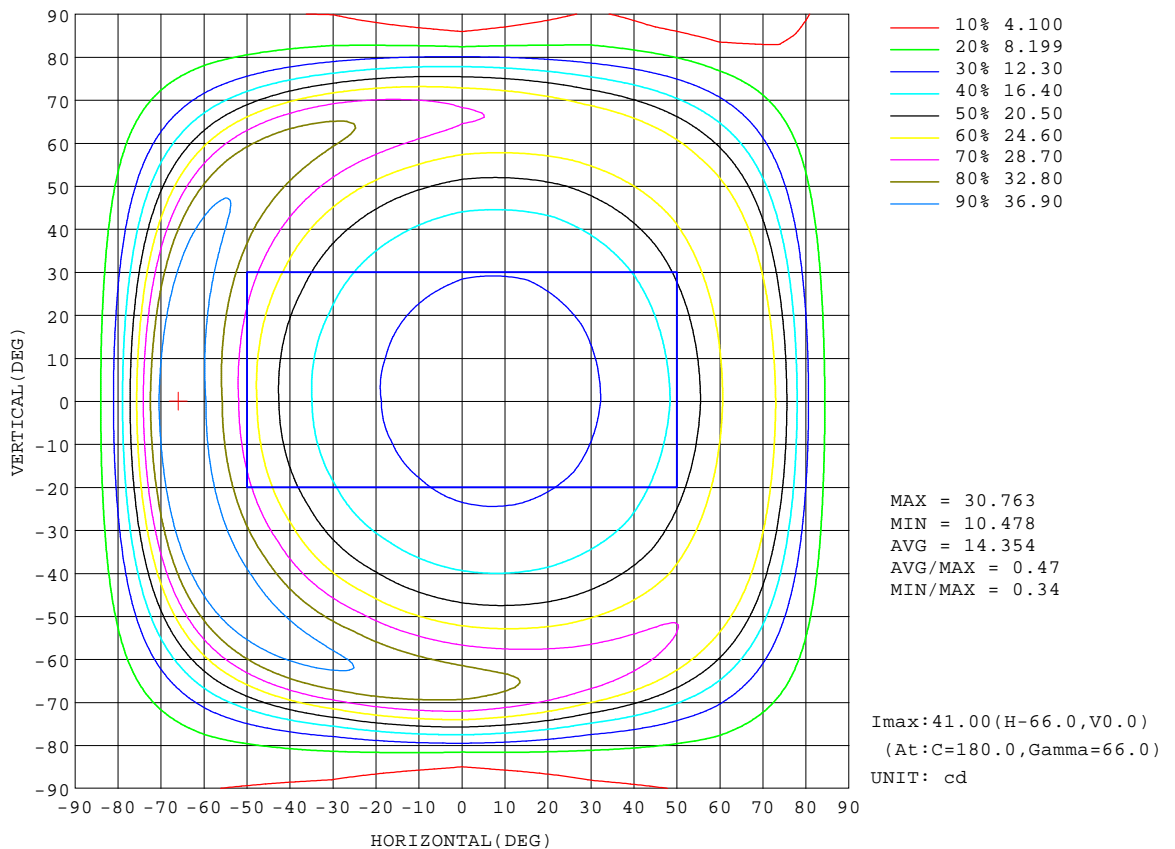
REFLECTANCE										
Ceiling	0.8	0.8	0.8	0.7	0.7	0.7	0.5	0.5	0.5	0
Walls	0.7	0.5	0.3	0.7	0.5	0.3	0.7	0.5	0.3	0
Working plane	0.2	0.2	0.2	0.2	0.2	0.2	0.2	0.2	0.2	0
ROOM INDEX	UTILIZATION FACTORS(PERCENT) $k(RI) \times RCR = 5$									
k = 0.60	42	27	19	41	27	19	39	26	19	11
0.80	50	35	26	49	35	26	46	34	25	16
1.00	58	43	33	56	42	33	53	44	32	22
1.25	66	51	41	64	50	40	60	48	39	29
1.50	72	57	47	69	56	47	65	54	45	35
2.00	81	68	58	78	66	57	73	63	55	44
2.50	87	75	66	84	73	65	79	70	62	51
3.00	91	81	73	88	79	71	83	75	68	57
4.00	97	89	82	94	86	80	89	82	77	64
5.00	101	94	88	98	91	86	92	87	82	70
ROOM INDEX	UF(total)									Direct
According to DIN EN 13032-2 2004			Suspended				SHRNOM = 1.25			

C Range: 0 - 360DEG
C Interval: 30.0DEG
Test Speed: HIGH
Temperature:25.3DEG
Operators:DAMIN
Test Date:2021-10-29

γ Range: 0 - 180DEG
 γ Interval: 1.0DEG
Test System:EO-2000A_V1 SYSTEM V2.00.443
Humidity:65.0%
Test Distance:8.000m [K=0.7063]
Remarks:

ISOCANDELA DIAGRAM

Test:U:12.000V I:0.1240A P:1.5000W PF:1.0000 Freq:0Hz		
Lamp Flux:126.88lx1 lm		
Name: WV3W	Type: LED	
MFR.:		



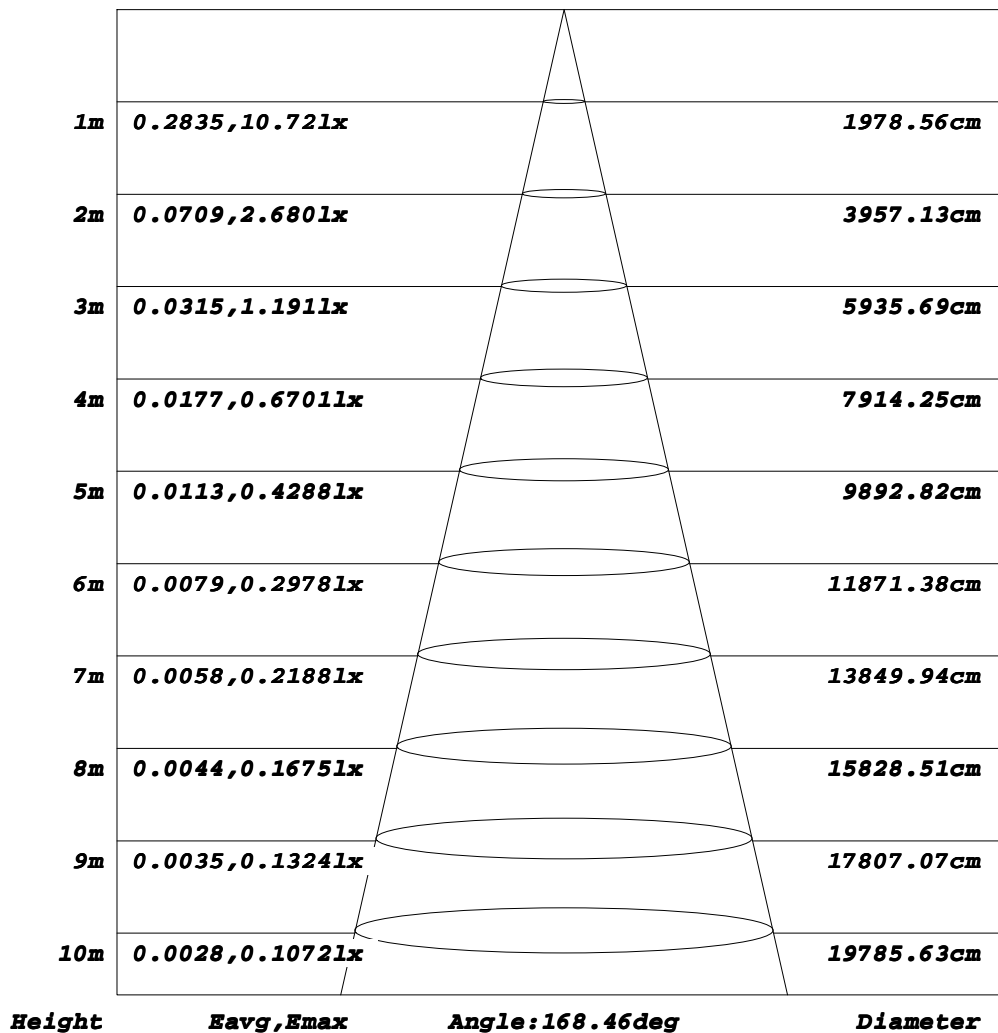
C Range: 0 - 360DEG
C Interval: 30.0DEG
Test Speed: HIGH
Temperature: 25.3DEG
Operators: DAMIN
Test Date: 2021-10-29

γ Range: 0 - 180DEG
γ Interval: 1.0DEG
Test System: EO-2000A_V1 SYSTEM V2.00.443
Humidity: 65.0%
Test Distance: 8.000m [K=0.7063]
Remarks:

AAI Figure

Test:U:12.000V I:0.1240A P:1.5000W PF:1.0000 Freq:0Hz		
Lamp Flux:126.88lx1 lm		
Name: WV3W	Type: LED	
MFR.:		

Flux out:116.4 lm



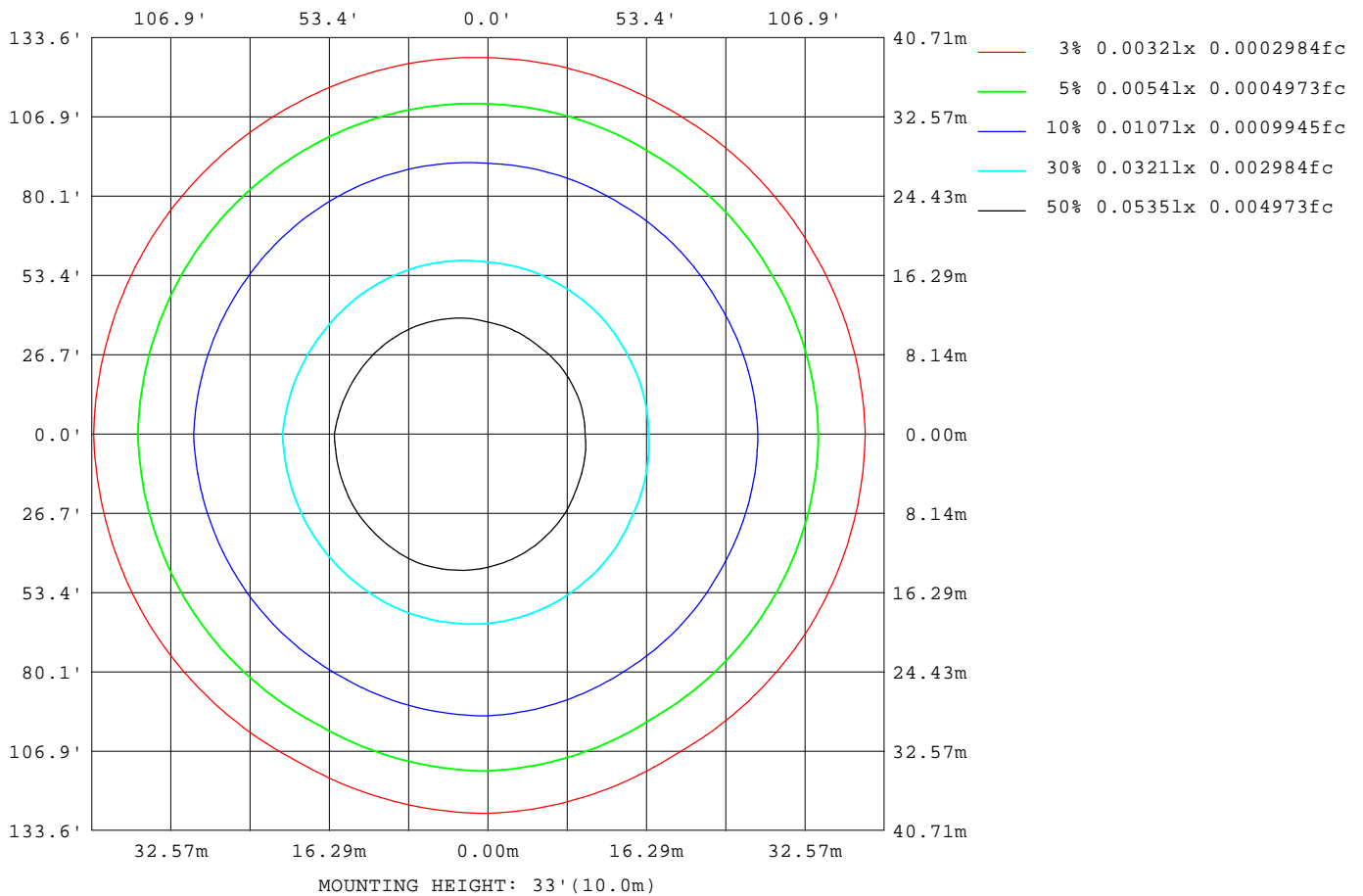
Note: The Curves indicate the illuminated area and the average illumination when the luminaire is at different distance.

C Range: 0 - 360DEG
C Interval: 30.0DEG
Test Speed: HIGH
Temperature: 25.3DEG
Operators: DAMIN
Test Date: 2021-10-29

γ Range: 0 - 180DEG
γ Interval: 1.0DEG
Test System: EO-2000A_V1 SYSTEM V2.00.443
Humidity: 65.0%
Test Distance: 8.000m [K=0.7063]
Remarks:

ISOLUX DIAGRAM

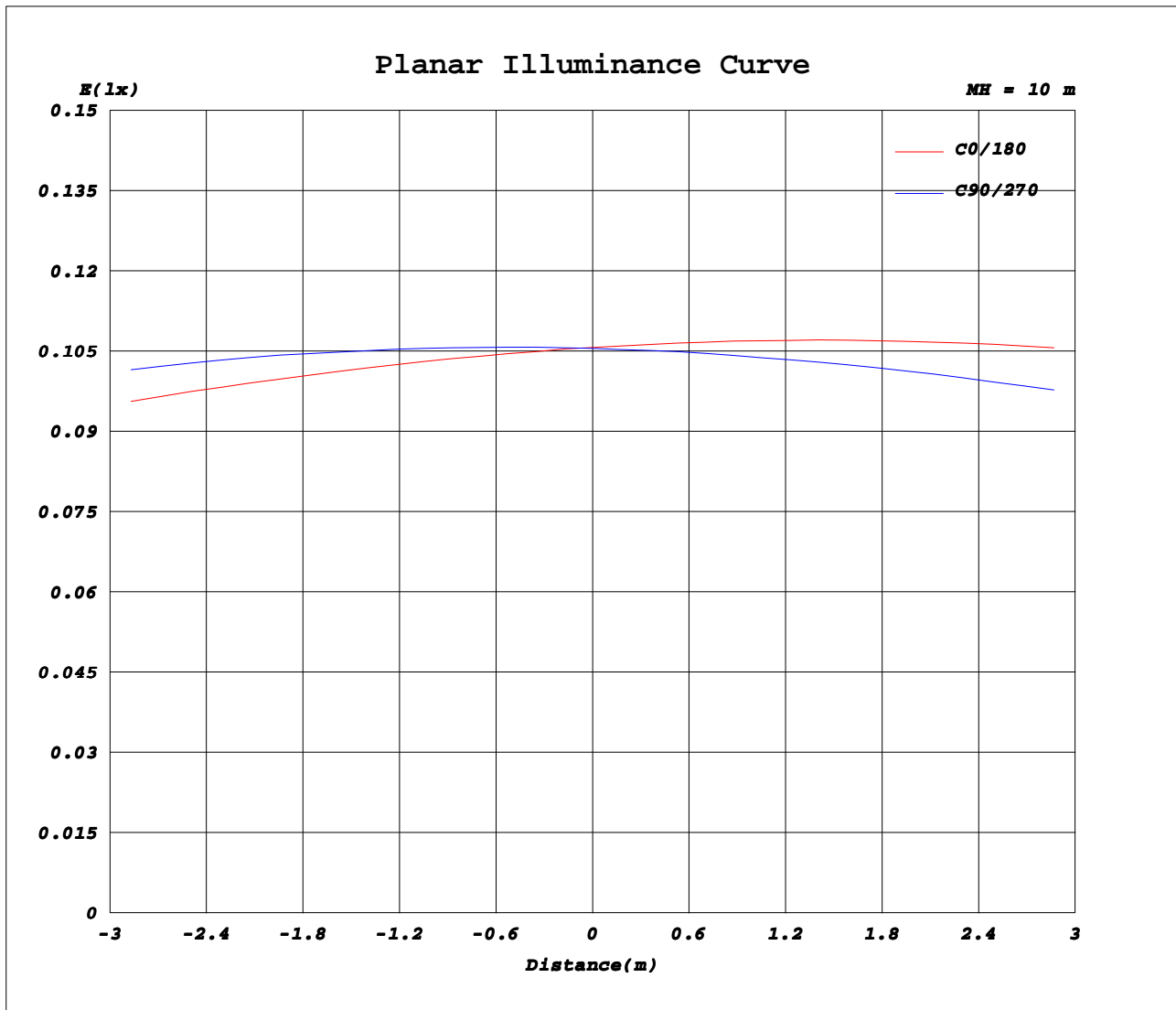
Test:U:12.000V I:0.1240A P:1.5000W PF:1.0000 Freq:0Hz		
Lamp Flux:126.88lx1 lm		
Name: WV3W	Type: LED	
MFR.:		



C Range: 0 - 360DEG
C Interval: 30.0DEG
Test Speed: HIGH
Temperature: 25.3DEG
Operators: DAMIN
Test Date: 2021-10-29

γ Range: 0 - 180DEG
γ Interval: 1.0DEG
Test System: EO-2000A_V1 SYSTEM V2.00.443
Humidity: 65.0%
Test Distance: 8.000m [K=0.7063]
Remarks:

Planar Illuminance Curve



C Range: 0 - 360DEG
C Interval: 30.0DEG
Test Speed: HIGH
Temperature: 25.3DEG
Operators: DAMIN
Test Date: 2021-10-29

γ Range: 0 - 180DEG
γ Interval: 1.0DEG
Test System: EO-2000A_V1 SYSTEM V2.00.443
Humidity: 65.0%
Test Distance: 8.000m [K=0.7063]
Remarks:

LUMINOUS DISTRIBUTION INTENSITY DATA

Test:U:12.000V I:0.1240A P:1.5000W PF:1.0000 Freq:0Hz		
Lamp Flux:126.88lx1 lm		
Name: WV3W	Type: LED	
MFR.:		

Table--1

UNIT: cd

C(DEG) γ (DEG)	0	30	60	90	120	150	180	210	240	270	300	330							
0	10.6	10.6	10.6	10.6	10.6	10.6	10.6	10.6	10.6	10.6	10.6	10.6							
5	10.5	10.5	10.6	10.7	10.8	10.8	10.8	10.7	10.6	10.5	10.5	10.5							
10	10.5	10.6	10.8	11.0	11.1	11.2	11.2	11.1	10.9	10.7	10.5	10.5							
15	10.7	10.9	11.1	11.3	11.6	11.7	11.8	11.6	11.2	10.9	10.7	10.7							
20	11.0	11.2	11.5	11.9	12.2	12.5	12.5	12.2	11.8	11.3	11.1	11.0							
25	11.4	11.7	12.0	12.5	13.1	13.4	13.5	13.1	12.5	11.9	11.5	11.4							
30	12.0	12.3	12.8	13.4	14.2	14.7	14.7	14.2	13.4	12.5	12.1	11.9							
35	12.7	13.1	13.8	14.8	15.8	16.4	16.4	15.8	14.7	13.5	12.8	12.6							
40	13.7	14.2	15.3	16.7	18.2	19.0	18.9	18.1	16.5	14.9	14.0	13.6							
45	15.1	15.9	17.5	19.3	21.4	22.4	22.3	21.1	18.8	16.8	15.6	15.1							
50	17.1	18.2	20.4	22.8	25.6	26.8	26.7	24.8	22.0	19.5	17.9	17.3							
55	20.1	21.4	24.1	27.2	30.4	31.9	31.9	29.0	25.8	22.9	21.1	20.3							
60	24.1	25.1	28.1	31.7	35.0	36.8	37.4	33.3	29.8	26.5	24.8	23.9							
65	27.6	28.1	31.0	34.5	37.1	39.2	40.9	36.5	33.0	28.9	27.3	26.6							
70	27.5	27.4	29.0	32.1	33.0	35.4	37.7	34.4	31.4	27.7	26.1	26.0							
75	21.4	21.1	20.3	22.4	22.2	24.7	26.4	24.9	22.8	21.3	20.2	20.4							
80	13.1	12.8	11.0	11.3	11.5	13.5	14.2	13.8	13.0	12.4	12.4	12.8							
85	7.71	7.28	5.92	4.11	5.94	7.02	7.32	7.28	6.93	4.95	7.18	5.94							
90	4.92	4.54	3.47	1.33	3.45	4.19	4.48	4.35	4.04	1.62	4.41	2.20							
95	3.52	3.13	2.07	0.56	2.05	2.86	3.23	2.99	2.35	0.63	2.55	1.77							
100	2.78	2.42	1.37	0.59	1.39	2.27	2.63	2.33	1.52	0.66	1.44	1.29							
105	2.30	1.97	1.08	0.61	1.09	1.88	2.18	1.93	1.14	0.68	1.22	1.09							
110	1.93	1.64	0.98	0.62	0.96	1.57	1.84	1.63	1.01	0.69	1.09	1.70							
115	1.62	1.39	0.92	0.62	0.87	1.30	1.54	1.36	0.92	0.69	1.02	1.48							
120	1.40	1.22	0.86	0.62	0.81	1.11	1.30	1.17	0.86	0.69	0.95	1.30							
125	1.25	1.11	0.81	0.62	0.76	0.99	1.16	1.05	0.82	0.68	0.89	1.18							
130	1.14	1.04	0.76	0.62	0.73	0.92	1.06	0.98	0.78	0.68	0.84	1.11							
135	1.08	0.98	0.67	0.62	0.69	0.88	1.01	0.94	0.76	0.68	0.74	1.04							
140	0.91	0.91	0.65	0.63	0.65	0.82	0.97	0.85	0.73	0.70	0.72	1.00							
145	0.90	0.75	0.66	0.63	0.62	0.68	0.87	0.78	0.71	0.71	0.73	0.87							
150	0.71	0.69	0.66	0.63	0.62	0.64	0.73	0.72	0.70	0.71	0.73	0.75							
155	0.68	0.68	0.66	0.64	0.62	0.62	0.67	0.69	0.69	0.70	0.71	0.72							
160	0.68	0.68	0.66	0.65	0.63	0.62	0.66	0.67	0.68	0.69	0.70	0.71							
165	0.69	0.69	0.67	0.66	0.65	0.64	0.67	0.67	0.68	0.69	0.70	0.70							
170	0.69	0.69	0.68	0.67	0.67	0.66	0.68	0.68	0.69	0.69	0.69	0.70							
175	0.69	0.69	0.68	0.68	0.68	0.67	0.68	0.68	0.69	0.69	0.70	0.69							
180	0.68	0.69	0.69	0.69	0.69	0.68	0.69	0.69	0.69	0.69	0.69	0.68							

C Range: 0 - 360DEG
C Interval: 30.0DEG
Test Speed: HIGH
Temperature: 25.3DEG
Operators: DAMIN
Test Date: 2021-10-29

γ Range: 0 - 180DEG
γ Interval: 1.0DEG
Test System: EO-2000A_V1 SYSTEM V2.00.443
Humidity: 65.0%
Test Distance: 8.000m [K=0.7063]
Remarks: